



# Wind turbine generator defect analysis





## Wind turbine generator defect analysis



### [Wind turbine generator failure analysis and fault diagnosis: A ...](#)

Since the wind turbine is a complex system with variable operating conditions, the actual fault signal often has nonlinear and non-stationary characteristics, so time-frequency analysis is more ...

## Wind Turbine Failures Review and Trends

This article presents a standardized analysis of failures in wind turbines concerning the main technologies classified in the literature, as well as identifies critical components and trends for ...



### [Enhanced fault detection and diagnosis in wind turbine systems ...](#)

Fault detection and diagnosis (FDD) is critical for ensuring the performance, safety, and reliability of industrial systems, especially in the expanding wind energy sector. As wind turbine ...

### [Wind turbine generator failure analysis and fault diagnosis: A ...](#)

The large scale deployment of modern wind turbines and the yearly increase of installed capacity have drawn attention to their operation and maintenance issues. The development of highly reliable and ...

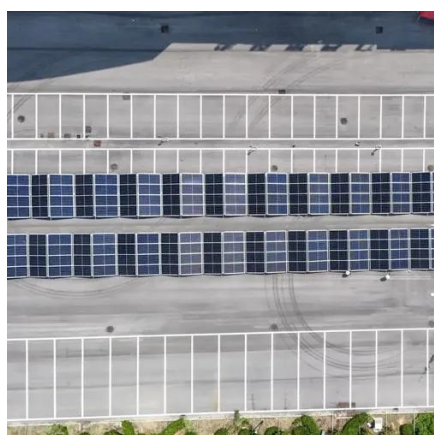


### Multi-scale defect detection technology for wind turbine blade ...

In the process of wind turbine blade defect detection, to address the challenges of extracting fine-grained features and inaccurate positioning due to blurred defect textures and large-scale

### Wind Turbine Generator Reliability Analysis To Reduce ...

Detailed fleet-level, turbine-level, and system/component-level reliability analysis assists owners/operators with critical wind farm and turbine model identification, supplier selection, inventory ...



### Wind turbine generator failure analysis and fault diagnosis: A ...

Finally, the application of four categories of model-based, signal-based, knowledge-based and hybrid approaches to wind turbine generator fault diagnosis is summarized. ...

### Artificial intelligence in wind turbine fault



## [diagnosis: A ...](#)

This study employs bibliometrics and content analysis to systematically trace the conceptual evolution and technological trajectory of intelligent fault diagnosis for wind turbines.



## [Wind turbine generator failure analysis and fault diagnosis: A ...](#)

The comprehensive review shows that the hybrid approach is now the leading and most accurate tool for real-time fault diagnosis for wind turbine generators.

## [WTBD-YOLOv8: An Improved Method for Wind Turbine Generator Defect ...](#)

Wind turbine blades are the core components responsible for efficient wind energy conversion and ensuring stability. To address challenges in wind turbine blade damage detection ...





## Contact Us

---

For catalog requests, pricing, or partnerships, please visit:

<https://firmaskrzypek.pl>

Phone: +48 22 426 71 90

Email: [info@firmaskrzypek.pl](mailto:info@firmaskrzypek.pl)

Scan the QR code to access our WhatsApp.

