



Wind power station occupies an area





Overview

Although a single turbine occupies 0.5 acres, optimal spacing for energy production can significantly increase the total area needed. Recent research shows that wind farms have been historically located far from. But wind turbines need lots of space, or they'll suffer a drop in performance. In practice, the cost of land and associated infrastructure may force companies to space turbines closer together. A single wind turbine has a relatively small physical footprint, typically requiring less than an acre for its foundation and an immediate access pad.



Wind power station occupies an area



How Much Land Is Used For One Wind Turbine?

Wind turbines require a significant amount of land, with the average commercial wind turbine requiring approximately 1.5 acres of land for the turbine itself and 25-40 acres for construction and installation.

How Many Wind Turbines Can Fit On One Acre?

While the turbines themselves have a small footprint, wind farms are spread out among several acres of land. They're unique compared to other forms of power as the land can still serve other purposes ...



[Understanding How Much Land is Required for a Wind Farm: Key Insights](#)

Although a single turbine occupies 0.5 to 1.5 acres, optimal spacing for energy production can significantly increase the total area needed. Importantly, wind farms occupy only about 5% of the land, ...

How Much Land Is Needed For Wind Turbines?

In the United States, the direct land use for wind turbines comes in at three-quarters of an acre per megawatt of rated capacity. That is, a 2-megawatt wind turbine would require 1.5 acres of land. In any ...



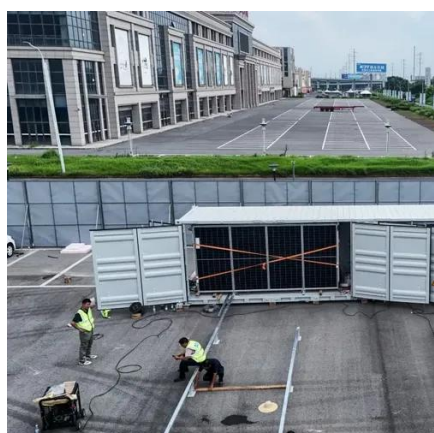
Wind farm

Wind farms vary in size from a small number of turbines to several hundred wind turbines covering an extensive area. Wind farms may be either onshore or offshore. Many of the largest operational onshore wind farms are ...



[How Much Land Does 1 Wind Turbine Need: Exploring Space ...](#)

Recent research shows that wind farms occupy a small percentage of land, leaving the majority available for other uses like agriculture. Optimizing the layout and spacing of wind turbines is essential for ...



Wind Turbines & Power Density

Scale that up to 1000 MW around-the-clock power and the land area occupied would be 256,000 acres, which is 400 square miles. If the capacity factor were 40%, then the 1000-MW goal could be met with only 300 ...

[Land requirements for wind turbines](#)



during and after construction

Wind turbines occupy different areas. When talking about the area for wind energy, it usually refers to the entire space occupied by a facility. This includes the areas swept by the rotors and the ...



How Many Acres Do You Need Per Wind Turbine?

A wind farm requires a considerably larger overall area to function effectively. A wind farm can typically occupy between 2 to 40 acres per megawatt of capacity, depending on various factors.



Contact Us

For catalog requests, pricing, or partnerships, please visit:

<https://firmaskrzypek.pl>

Phone: +48 22 426 71 90

Email: info@firmaskrzypek.pl

Scan the QR code to access our WhatsApp.

