



Wind power has a large amount of power generation at night





Overview

Wind is generally stronger at night due to factors such as temperature changes, nocturnal inversions, and the absence of slow-moving air. The atmospheric boundary layer moves through a daily cycle based on heat from the sun, with wind turbines capable of generating electricity 24/7. This process involves wind turbines, which convert the wind's energy into mechanical power that. During night, the sea is still relatively warmer (warmed during day) compared to the fastly cooled land thus high air density on land hence higher pressure. In comparison, wind speeds are higher during day (from sea to land). A designated area free of trees and buildings must be created around it, but it is often used for agriculture. In the same way, the atmospheric winds that circle the earth are created because the land near the earth's equator is hotter than the land near the North Pole and the South Pole.



Wind power has a large amount of power generation at night



How Effective Is Wind Energy at Night? -> Question

The simple answer is that wind energy production at night can be significant, and in some cases, even higher than during the day. This is primarily because of atmospheric conditions that ...

Power generation is blowing in the wind

Wind speeds were higher at night (more power) than during the day (less power) and higher during the warm season (more power) than in the cool season (less power).

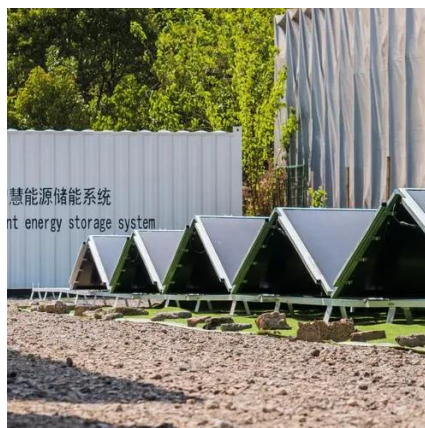


Wind Turbine Power Generation - Day vs. Night Production Rates

Generally speaking, wind speeds tend to be higher during the day than at night, which can lead to higher power production during daylight hours. During the day, solar radiation heats the ...

why is wind turbine production greater at night? : r/wind ...

Wind farms typically generate most of their energy at night, when most electricity demand is lowest. So a lot of that "green" energy is wasted.



Is wind power generation greater or less at night

A key feature among the states with the largest renewable generation capacity is the high reliance on wind power, which accounts for an average 80% of the total installed

Wind Energy Factsheet

Noise levels at a 350m distance from a typical wind farm is 35-45 dB--comparable to a quiet bedroom (35 dB) and quieter than a car traveling 40 mph at 100m distance (55 dB). 29 Multiple studies ...



Why Is Wind Energy Strongest At Night

Wind is generally stronger at night due to factors such as temperature changes, nocturnal inversions, and the absence of slow-moving air. The atmospheric boundary layer moves ...

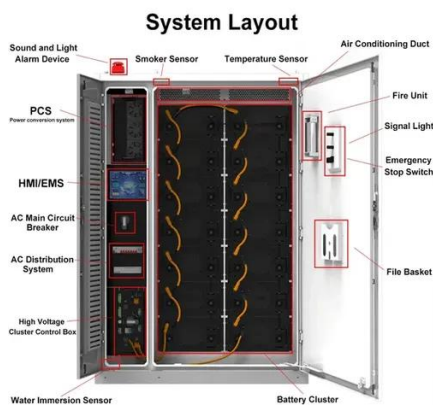


The light and dark side of wind



power generation

Read the article and learn about the light and dark side of wind power generation from the experts of the leading pro weather forecast app and site for outdoors recognized by WMO



Wind power

Wind power is a sustainable, renewable energy source, and has a much smaller impact on the environment than burning fossil fuels. Wind power is variable, so it needs energy storage or other ...



Contact Us

For catalog requests, pricing, or partnerships, please visit:

<https://firmaskrzypek.pl>

Phone: +48 22 426 71 90

Email: info@firmaskrzypek.pl

Scan the QR code to access our WhatsApp.

