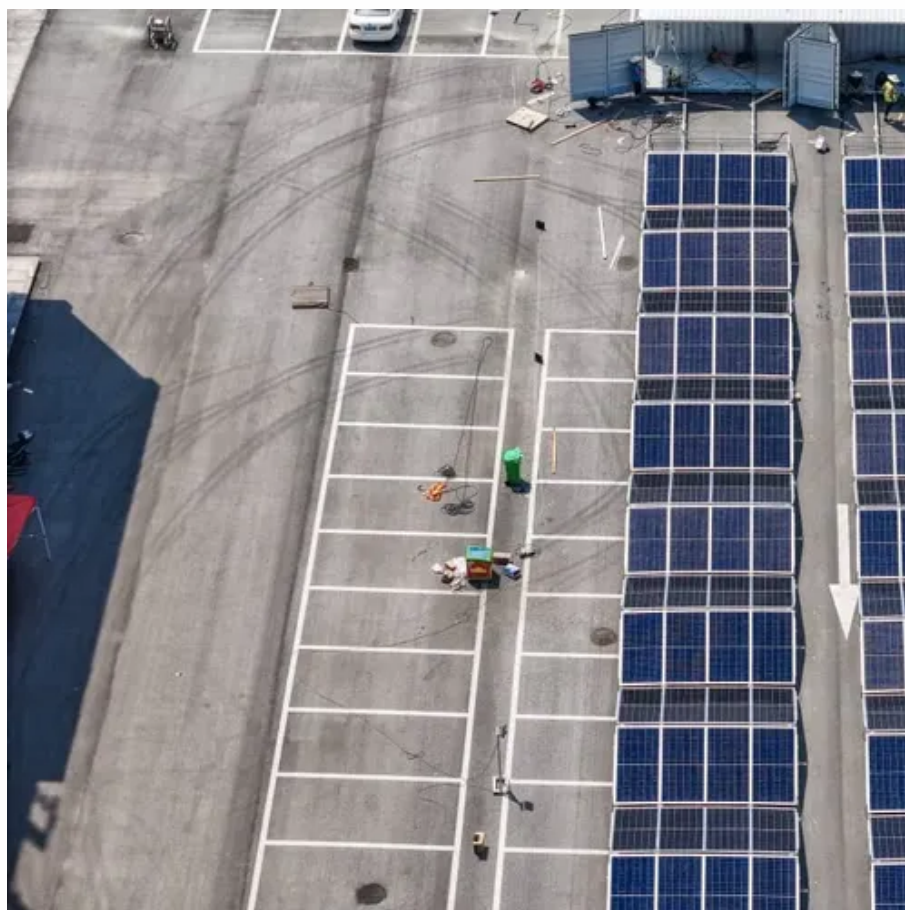




# Wind power generation coefficient





## Wind power generation coefficient



### [How To Calculate The Power Coefficient Of A Wind Turbine](#)

The total wind power flowing into the turbine is defined by the wind power formula. The efficiency of a wind turbine is typically expressed through its power coefficient ( $C_p$ ), which represents ...

### [Optimization of power coefficient equation for standalone wind ...](#)

Accurate modeling of wind turbine performance is essential for improving energy yield, with the power coefficient ( $C_p$ ) playing a key role in aerodynamic energy conversion. ...



### Wind Power Coefficient

By tracking changes in the wind power coefficient over time, operators can identify potential issues and take corrective actions to maximize power output. Researchers rely on wind ...

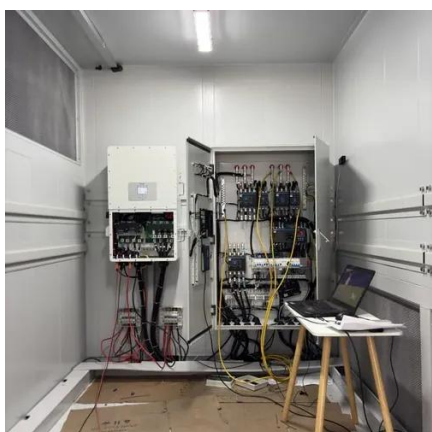
### Power Coefficient of a Wind Turbine

The power coefficient of a wind turbine, known as  $C_p$ , is a key performance indicator for understanding how efficiently a wind turbine converts wind energy into mechanical energy. The ...



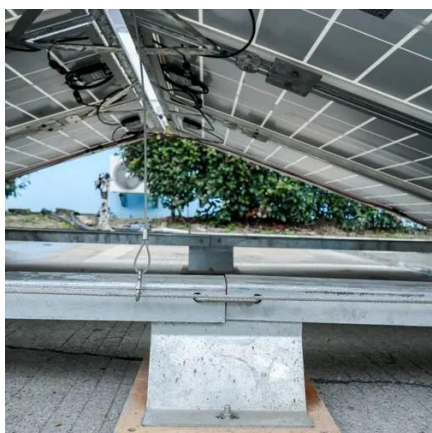
## [Comparison of Power Coefficients in Wind Turbines ...](#)

This paper presents a review of the power and torque coefficients of various wind generation systems, which involve the real characteristics of the wind turbine as a function of the ...



## Wind turbine power coefficient

Power Coefficient ( $C_p$ ) is a measure of wind turbine efficiency often used by the wind power industry.  $C_p$  is the ratio of actual electric power produced by a wind turbine divided by the total ...



## Wind Power Fundamentals

History of Wind Power  
Physics Basics  
Technology Overview  
Beyond the Science and Technology ...

## Wind turbine power generation



## efficiency

V. Future Outlook: Improve wind power generation efficiency and promote sustainable development  
Advancing technology will boost wind turbine efficiency, lower costs, and drive large ...



## Calculating Wind Turbine Power Coefficient ( $C_p$ )

A: The power coefficient of a wind turbine can be improved by optimizing the design of the rotor blades, using advanced materials, and increasing the wind speed at the hub height. ...

### [What Is the Power Coefficient \( \$C\_p\$ \) of a Wind Turbine, and Why ...](#)

Conclusion The power coefficient ( $C_p$ ) of a wind turbine is a fundamental parameter in the field of wind energy, representing the efficiency with which a turbine converts wind energy into ...





## Contact Us

---

For catalog requests, pricing, or partnerships, please visit:

<https://firmaskrzypek.pl>

Phone: +48 22 426 71 90

Email: [info@firmaskrzypek.pl](mailto:info@firmaskrzypek.pl)

Scan the QR code to access our WhatsApp.

