



# Which DC power supply is better for lithium battery energy storage cabinets used in ports





## Which DC power supply is better for lithium battery energy storage c



### [Using DC Power Supplies & Chargers with Lithium-Ion Battery ...](#)

With interest growing in the use of Li-ion battery chemistries at RF sites, some caution and research is required. Lithium-ion (Li-ion) batteries offer some potential advantages over ...

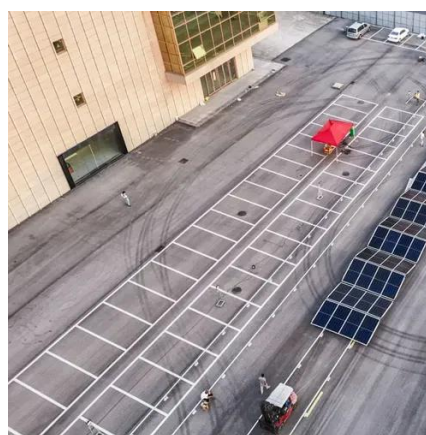


### [Guide to Battery Cabinets for Lithium-Ion Batteries: 6 Essential](#)

Lithium-ion batteries are commonly used in various applications across businesses, from energy storage systems to electric vehicles. However, these powerful batteries require careful ...

### **BESS CABINET**

A BESS cabinet (Battery Energy Storage System cabinet) is no longer just a "battery box." In modern commercial and industrial (C& I) projects, it is a full energy asset --designed to reduce electricity ...



### [The Ultimate Guide to Lithium-Ion Battery Storage Cabinets](#)

Discover the importance of lithium-ion battery storage cabinets for safe battery storage and charging. Learn best practices, key features, and how to choose the right battery storage cabinet ...



## HAIKAI Energy Storage

HAIKAI's lithium-ion (LFP) battery energy storage solution have successfully been applied to KWh-scale industrial scenarios such as UPS backup power for transportation, petroleum, petrochemical, DC ...



## USING DC POWER SUPPLIES & CHARGERS WITH ...

Most Li-ion batteries perform at their best with a constant float voltage from the DC power supply. For example, a 48 volt Li-ion power plant may have an optimal float voltage of 54.0 ...



## [Cabinet-type lithium battery as backup power supply and UPS](#)

Cabinet-type lithium battery is an energy storage device or power supply device designed in the form of a cabinet with lithium-ion battery as the core. It is usually designed to meet the energy ...

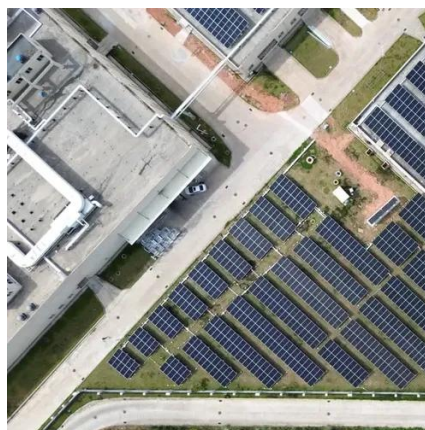


## [How to design an energy storage cabinet:](#)



## [integration and ...](#)

Lithium batteries have become the most commonly used battery type in modern energy storage cabinets due to their high energy density, long life, low self-discharge rate and fast charge ...



## **Vertiv(TM) EnergyCore, Lithium Ion Battery Cabinet**

The Vertiv(TM) EnergyCore Li5 and Li7 battery systems deliver high-density, lithium-ion energy storage designed for modern data centers. Purpose-built for critical backup and AI compute loads, they ...

## [Energy Storage Cabinets: Key Components, Types, and Future ...](#)

Energy storage cabinets are crucial in modern energy systems, offering versatile solutions for energy management, backup power, and renewable energy integration. As technology ...





## Contact Us

---

For catalog requests, pricing, or partnerships, please visit:

<https://firmaskrzypek.pl>

Phone: +48 22 426 71 90

Email: [info@firmaskrzypek.pl](mailto:info@firmaskrzypek.pl)

Scan the QR code to access our WhatsApp.

