



What is the inverter voltage when fully charged





Overview

Many inverters have a built-in voltage display showing the battery's current charge level. When charging is almost complete, the voltage drops to about 13. A quality charge controller will provide. My AIO inverter is Mpp PIP 2424LV-MSD.



What is the inverter voltage when fully charged



Inverter Battery Voltage Chart

A reading of 12.3 volts with no load indicates that your inverter ...

[How to Know If Your Inverter Battery Is Fully Charged: Simple](#)

To determine if your inverter battery is fully charged, you can use a multimeter to check the voltage level of the battery. A multimeter is a simple device that measures electrical parameters ...



Inverter Battery Voltage Chart

A reading of 12.3 volts with no load indicates that your inverter battery is partially discharged and may need recharging soon, as a fully charged 12V battery should read around 12.6 ...

[How do You Know if the Inverter Battery is Fully Charged?](#)

When the charge is almost done, the voltage drops to around 13.7 volts. When the battery charge reaches float level, the charge controller should indicate it is full.



[How to Know If Your Solar Battery is Fully Charged \(3-Step Guide\)](#)

The quickest way to check your battery's charge is by looking at the digital display on your solar inverter, which typically shows a State of Charge (SoC) percentage. Alternatively, check the status lights on ...



[How to Check and Maintain Your Inverter Battery Voltage](#)

Inverter Display: For further instructions on figuring out the voltage readings, review the manual that came with your inverter. To determine whether the battery is fully charged, look for a ...



[What to Do When Your Inverter Battery is Fully Charged?](#)

Most inverters come with an LED indicator light that changes colour when the battery is fully charged. Typically, a green or blue light signals a full charge. A multimeter can help you check the battery ...

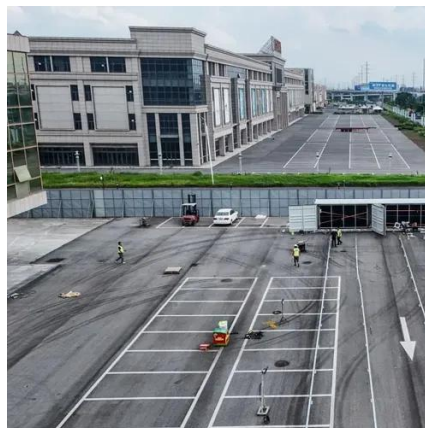


What should the fully charged at rest



voltage be?

At full charge state, you also have to be sure there is no surface charge. It is hard to be certain of this until a cell open circuit rested voltage drops below about 3.35v.



[How To Charge Inverter Battery , Tips & Charging Time](#)

Most tubular batteries used in inverters operate at a voltage of 12V, 24V, or 48V. Ensuring your charger matches these specifications is essential for efficient charging.

[Understanding Inverter Charging: Does an Inverter Stop Charging ...](#)

Charging Mechanism of Inverters The charging mechanism of an inverter is designed to manage the flow of energy to and from the battery bank. Modern inverters are equipped with ...



How to Know If Inverter Battery Fully Charged?

For example, when an inverter battery is charging, the voltage range is 14.4-14.6 volts. When charging is almost complete, the voltage drops to about 13.7 volts. When the battery reaches ...



Contact Us

For catalog requests, pricing, or partnerships, please visit:

<https://firmaskrzypek.pl>

Phone: +48 22 426 71 90

Email: info@firmaskrzypek.pl

Scan the QR code to access our WhatsApp.

