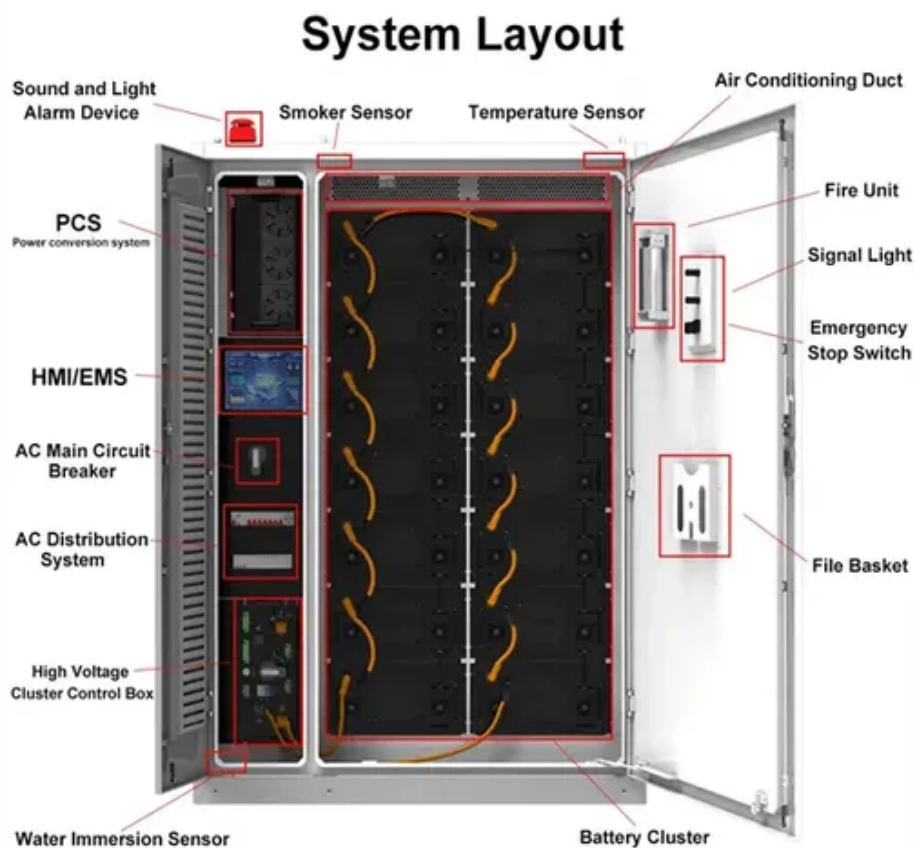




What are the power remote mobile base stations





Overview

High Power Mobile Base Stations are advanced wireless communication systems designed to handle the rugged demands of construction sites. Many of these sites operate far from conventional grids, making traditional power methods costly and environmentally impactful. However, their construction, operation and maintenance, energy consumption, and security present numerous pain points, directly. Uninterrupted power supply for remote base stations has been a challenge since the founding of the wireless industry, but alternative sources have a chance of succeeding where traditional solutions have failed. This is made possible by cellular networks operating through hundreds of thousands of cellular sites, also known as base stations relaying signals through cities and countryside alike, forming the. With the expansion of global communication networks, especially the advancement of 4G and 5G, remote communication base stations have become increasingly critical.



What are the power remote mobile base stations



[Breaking Down Base Stations - A Guide to Cellular Sites](#)

A mobile telecom site usually takes the form of a mobile tower rig like the popular cell-on-wheels. This equipment can be installed remotely to bridge gaps in new network infrastructure or as ...

[Telecom Base Sites , Hybrid Energy Mobile Wireless Station](#)

Using innovative hybrid energy systems, wind, solar, and diesel combined will ensure that power supply is unbroken and dependable in our Base Sites. Enjoy rapid deployment and, using our intuitive app, ...



[What You Should Know About High Power Base Stations](#)

High Power Mobile Base Stations are advanced wireless communication systems designed to handle the rugged demands of construction sites. Offering robust signals, expansive ...

What Powers Telecom Base Stations During Outages?

Telecom batteries for base stations are backup power systems using valve-regulated lead-acid (VRLA) or lithium-ion batteries. They ensure uninterrupted connectivity during grid failures ...



1075KWHH ESS

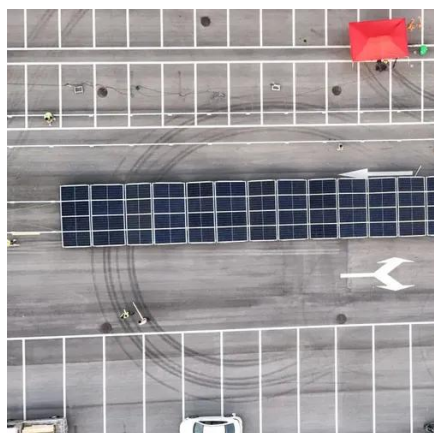


Communication Base Station Energy Solutions

During the day, the solar system powers the base station while storing excess energy in the battery. At night, the energy storage system discharges to supply power to the base station, ensuring 24/7 ...

Mobile Communication Base Stations

Base stations are distributed over a wide range of areas (covering urban, mountainous, rural, coastal, and desert environments). Some sites are located in remote locations and face harsh environments, ...



Uninterrupted remote site power supply

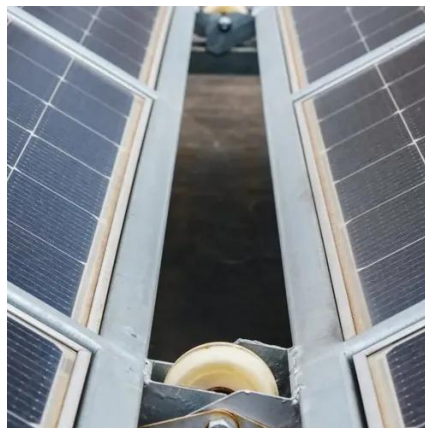
Considering that remote base stations must be highly-integrated, inexpensive, and modest, Huawei has developed its all-on-pole EasySite solution, which integrates the base station, antennas, ...

[What Is a Telecom Base Station and How](#)



Does It Work?

In essence, the telecom base station is the wireless bridge that connects every mobile user to the digital world. It not only enables voice and data communication but also supports positioning, IoT, and ...



Telecom Towers and Remote Base Stations

Discover comprehensive insights into powering telecom towers and remote base stations with off-grid solar and energy storage solutions. Explore LiFePO4 batteries, system design, and ...

APX(TM) Transportable Base Station

Engineered with top panel quick connections for efficiency, the APX Transportable Base Station is the ideal solution for federal agencies and first responders on the move. Aluminum ...





Contact Us

For catalog requests, pricing, or partnerships, please visit:

<https://firmaskrzypek.pl>

Phone: +48 22 426 71 90

Email: info@firmaskrzypek.pl

Scan the QR code to access our WhatsApp.

