



What are the dimensions of polycrystalline solar panels





Overview

Polycrystalline Solar Panels have typical heights of 64", 76.5" (99, 131 cm), and depths between 1. Solar cell sizes are 6". The surface of these solar cells resembles a mosaic which comes under polycrystalline solar panel specifications. These solar panels are square in form and have a brilliant blue color due to the silicon crystals that make them up. Before we delve into the. Monocrystalline panels, the most popular choice in 2025, offer: While largely obsolete in 2025, polycrystalline panels previously offered: Thin-film panels offer unique sizing benefits: Bifacial panels, gaining popularity in 2025, have unique sizing considerations: Determining how many panels you. Most polycrystalline panels follow industry-standard sizing to ensure compatibility with mounting systems and inverters. A typical 60-cell module measures approximately **1.0 meters (39 inches) in width** and **1.



What are the dimensions of polycrystalline solar panels



Polycrystalline Solar Panel Specifications

There are three primary types of solar panel options to consider when choosing solar panels for your photovoltaic system: monocrystalline solar panels, polycrystalline solar panels, and ...

[Standard Solar Panel Sizes And Wattages \(100W-500W Dimensions\)](#)

As we can see, those 60-cell, 72-cell, and 96-cell solar panel dimensions are a bit theoretical. These are the practical solar panel dimensions by wattage from solar panels that are actually sold on the ...



Solar Panel

These panels, known for their bluish hue, are made from multiple silicon crystals and typically have efficiency rates between 14-17%. Their dimensions include heights of 64" and 76.5", widths of 39" ...

[Solar Panel Size & Dimensions Guide 2025 . Complete Specs](#)

Standard Residential Panels Optimize Space and Handling: The industry-standard 60-cell panel dimensions (65" × 39" × 1.5") aren't arbitrary - they represent the optimal balance between ...



Solar Panel

Polycrystalline Solar Panels are manufactured in 60, 72, and 96 cell configurations with a solar efficiency between 14-17%. Polycrystalline Solar Panels have typical heights of 64", 76.5" (163, ...

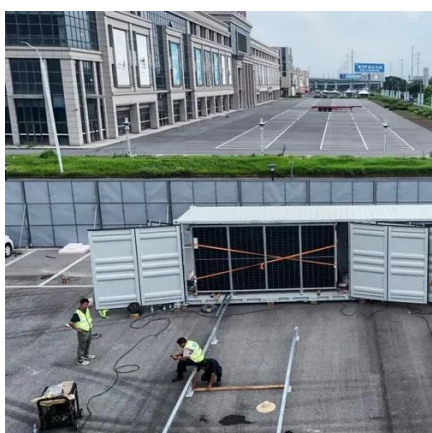
[Polycrystalline Solar Panel: Definition, How it Works, and Features](#)

Polycrystalline panels are easy to distinguish from their blue hue and specked appearance, which is caused by the way that light interacts with fragments within the cell.



[Polycrystalline Solar Panels: 2026 Costs, Efficiency, Pros & Cons](#)

Before installation, you can expect to pay anywhere from \$0.90 to \$1 per watt for polycrystalline solar panels. However, this price varies based on several factors, such as your ...

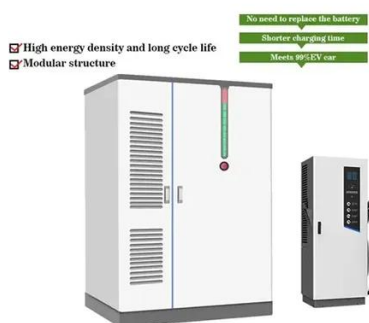


[Understanding the Dimensions of](#)



Polycrystalline Photovoltaic ...

This guide explores standard sizes, factors influencing panel dimensions, and practical installation considerations - all while addressing common challenges in solar projects.



Polycrystalline Solar Panel Specifications

Polycrystalline solar panels come in a variety of sizes, with the most common being 65 inches by 39 inches. However, the size can ...

What is the size of polycrystalline photovoltaic panels?

Most polycrystalline panels follow industry-standard sizing to ensure compatibility with mounting systems and inverters. A typical 60-cell module measures approximately **1.0 meters (39 inches) in width** ...



Polycrystalline Solar Panel Size: A Comprehensive Guide to ...

Polycrystalline solar panels come in a variety of sizes, with the most common being 65 inches by 39 inches. However, the size can vary depending on the specific power output and ...



Contact Us

For catalog requests, pricing, or partnerships, please visit:

<https://firmaskrzypek.pl>

Phone: +48 22 426 71 90

Email: info@firmaskrzypek.pl

Scan the QR code to access our WhatsApp.

