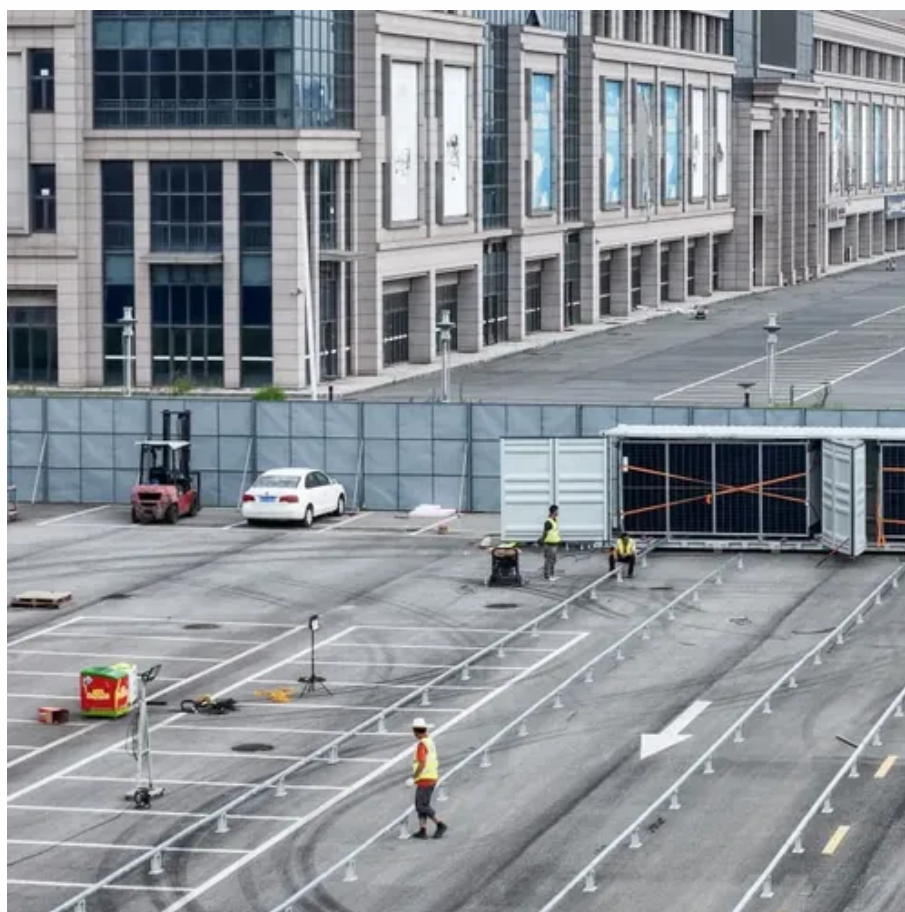




Waterproof energy storage cabinet for scientific research stations





Overview

Durable waterproof sheet metal cabinets for lithium battery and solar storage systems. Customized design, weather protection, CNC cutouts, and fast delivery. Featuring lithium-ion batteries, integrated thermal management, and smart BMS technology, these cabinets are perfect for grid-tied, off-grid, and microgrid applications. Our Lithium Ion Battery Storage Cabinet LBSC-A11 is suitable for large-scale battery storage, EV charging stations, and energy storage facilities. In addition, Machan emphasises. AZE's outdoor battery cabinet protects contents from harmful outdoor elements such as rain, snow, dust, external heat, etc. They are made of galvanized steel, stainless steel or aluminum with heat insulation material. Liquid cooled outdoor 215KWH 100KW lithium battery energy storage system cabinet is an energy storage device based on lithium-ion batteries, which uses lithium-ion batteries as energy storage components inside.



Waterproof energy storage cabinet for scientific research stations

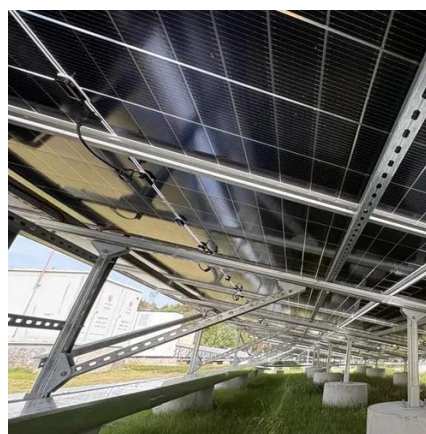


[Commercial and Industrial Energy Storage Cabinet BESS , Anern](#)

All-in-One Design: Compact, pre-assembled solution for easy deployment and reduced installation time. High Scalability: Modular architecture allows for flexible capacity expansion. Robust Protection: IP54 ...

[Outdoor Battery Box Enclosures and Cabinets , Lithium-ion , Solar](#)

AZE's heavy duty outdoor battery enclosures and Lithium battery storage system are available in NEMA 3R, or 4X configurations. These outdoor battery enclosures, which come in all shapes and sizes, are ...



Lithium Ion Battery Storage Cabinet LBSC-A11

Our Lithium Ion Battery Storage Cabinet LBSC-A11 is suitable for large-scale battery storage, EV charging stations, and energy storage facilities. It provides high-capacity containment with integrated ...

Lithium Ion Battery Storage Cabinet LBSC-A11

Our Lithium Ion Battery Storage Cabinet LBSC-A11 is suitable for large-scale ...



Why Waterproof and Ventilated Energy Storage Cabinets Are the ...

Imagine your energy storage cabinet as a submarine. The IP67 rating isn't just alphabet soup - it means complete dust protection and surviving 30 minutes underwater.

All-in-One Energy Storage Cabinet & BESS Cabinets , Modular, ...

Featuring lithium-ion batteries, integrated thermal management, and smart BMS technology, these cabinets are perfect for grid-tied, off-grid, and microgrid applications. Explore reliable, and IEC ...



Cabinets and racks - KonkaEnergy

KonkaEnergy Cabinets & Racks Collection - Engineered for secure and efficient energy storage, our battery cabinets and racks provide robust solutions for commercial and industrial applications.

Energy Storage Enclosures/Cabinets ,



Modular Design to Meet ...

Our battery storage cabinets are constructed with a modular design, providing optimal flexibility for businesses across various sectors. Our power storage cabinets also adhere to safety and quality ...



Outdoor Cabinet , SWA Energy LiFePO4 Battery Storage Systems

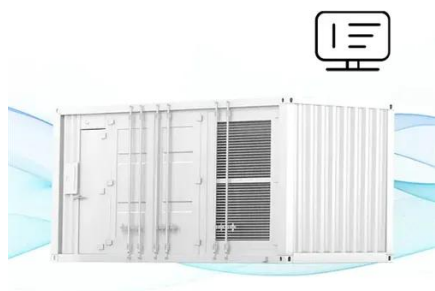
With IP54/IP55 protection, anti-corrosion design, and intelligent temperature control, they are ideal for telecom base stations, remote power supply, and containerized microgrids. Our outdoor cabinets are ...

Custom Waterproof Battery Storage Cabinet for Solar and Energy

Durable waterproof sheet metal cabinets for lithium battery and solar storage systems. Customized design, weather protection, CNC cutouts, and fast delivery.



FLEXIBLE SETTING OF MULTIPLE WORKING MODES



Storage Cabinets , Fisher Scientific

Mopec's Casework Line offers durable, modular stainless-steel cabinetry for surgical pathology, autopsy, and lab settings. Built for longevity, easy cleaning, and seamless integration, it supports efficient, ...



Contact Us

For catalog requests, pricing, or partnerships, please visit:

<https://firmaskrzypek.pl>

Phone: +48 22 426 71 90

Email: info@firmaskrzypek.pl

Scan the QR code to access our WhatsApp.

