



Voltage source three-phase inverter





Voltage source three-phase inverter



Analysis of Three-Phase Voltage-Source Inverters

Similar to the single-phase VSI, the three-phase VSI converts a DC voltage to three-phase AC voltage and current in the output. The three-phase output is synthesized by three half-bridge structures that ...

How are current and voltage related to torque and speed of a ...

Voltage instead "regulates" how fast a motor can run: the maximum speed a motor can reach is the speed at which the motor generates a voltage (named "Counter-electromotive force") ...



Voltage Source Inverter : Construction, Phases & Its Applications

The Three-Phase Voltage Source Inverter block implements a three-phase voltage source inverter that generates neutral voltage commands for a balanced three ...

Lecture 23: Three-Phase Inverters

One might think that to realize a balanced 3-phase inverter could require as many as twelve devices to synthesize the desired output patterns. However, most 3-phase loads are connected in wye or delta, ...



3-Phase Inverter

A voltage source inverter (VSI) is an inverter that converts DC source voltage into an AC output voltage. It is also known as voltage -fed inverter, suitable for situations where the DC source ...

inductive

The reason the voltage across the motor dies away slowly is because in the absence of current driven through it, it becomes a generator. That is, the spinning rotor has momentum, and ...

Our Lifepo4 batteries can be connected in parallels and in series for larger capacity and voltage.



What is "forward" and "reverse" voltage when working with diodes?

The reverse voltage is the voltage drop across the diode if the voltage at the cathode is more positive than the voltage at the anode (if you connect + to the cathode). This is usually much ...

What, exactly, is voltage?



And also if voltage is like gravitational potential energy, how does more voltage mean more current? And here our nice analogy breaks down. In this sense voltage is more like pressure in ...



Voltage drop across a single resistor and across two resistors

An intuitive way to look at is that all the voltage is dropped across two resistors, and since the resistors are the same, the voltage drop across each will be the same, each taking half.



What exactly is voltage?

The total voltage you get from one out and back, even with a high temperature difference is pretty small. By putting many of these out and back combinations together, you can get a useful voltage. A single ...



Voltage of Incandescent Christmas Mini Bulbs [closed]

The simplest solution is to wire an incandescent lamp in series with your lights. The smaller the wattage, the higher the resistance and the more voltage drop you'll get. The problem is ...



Voltage Source Inverter : Construction.



Phases & Its Applications

VSI can be represented in 2 topologies, are single-phase and a 3-phase inverter, where each phase can be further classified into a Half-bridge inverter and full-bridge inverter.



Three-Phase Voltage Source Inverter

The Three-Phase Voltage Source Inverter block implements a three-phase voltage source inverter that generates neutral voltage commands for a balanced three-phase load.

Three Phase Voltage Source Inverter with SPWM

A three-phase Voltage Source Inverter (VSI) with SPWM (Sinusoidal Pulse Width Modulation) is a type of inverter that converts DC voltage into three-phase AC voltage with sinusoidal waveforms.



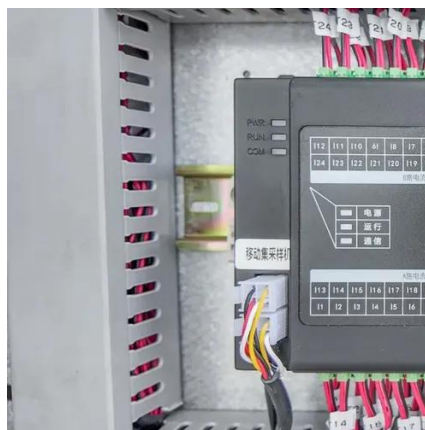
capacitor

Why at some particular frequency (f_c), the capacitor voltage goes beyond supply voltage (V_s) value? At series resonance, inductive reactance and capacitive reactance values cancel out ...

CHAPTER4



4.1 Introduction In this chapter the three-phase inverter and its functional operation are discussed. In order to realize the three-phase output from a circuit employing dc as the input voltage a three-phase ...

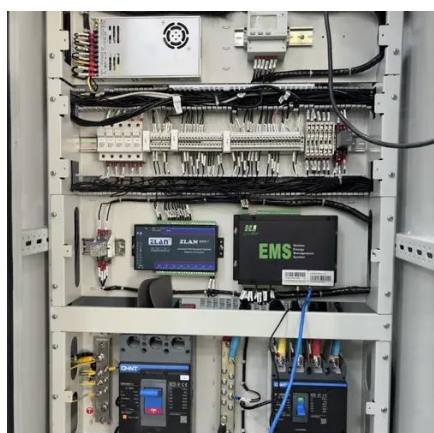


How does a Three Phase Inverter Work? , inverter

The DC power source of the three-phase current-type inverter, i.e., the DC current source, is achieved through a variable voltage source using current feedback control.

Why does power supply have a negative rail if can only output positive

According to the datasheet of this power supply, the output voltage goes from 0~60 VDC. If the output can't be negative, why does it have a negative rail beside ground?



Three-Phase Inverters

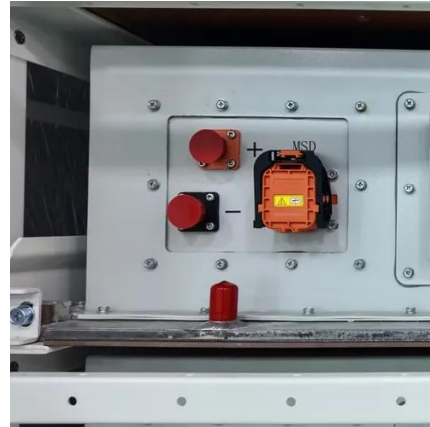
Modern electronic systems cannot function without three-phase inverters, which transform DC power into three-phase AC power with adjustable amplitude, frequency, and phase difference.

Three-phase inverter reference design for



200-480VAC drives ...

Three-phase inverter reference design for 200-480VAC drives (Rev. A) This reference design realizes a reinforced isolated three-phase inverter subsystem using isolated IGBT gate drivers and isolated ...





Contact Us

For catalog requests, pricing, or partnerships, please visit:

<https://firmaskrzypek.pl>

Phone: +48 22 426 71 90

Email: info@firmaskrzypek.pl

Scan the QR code to access our WhatsApp.

