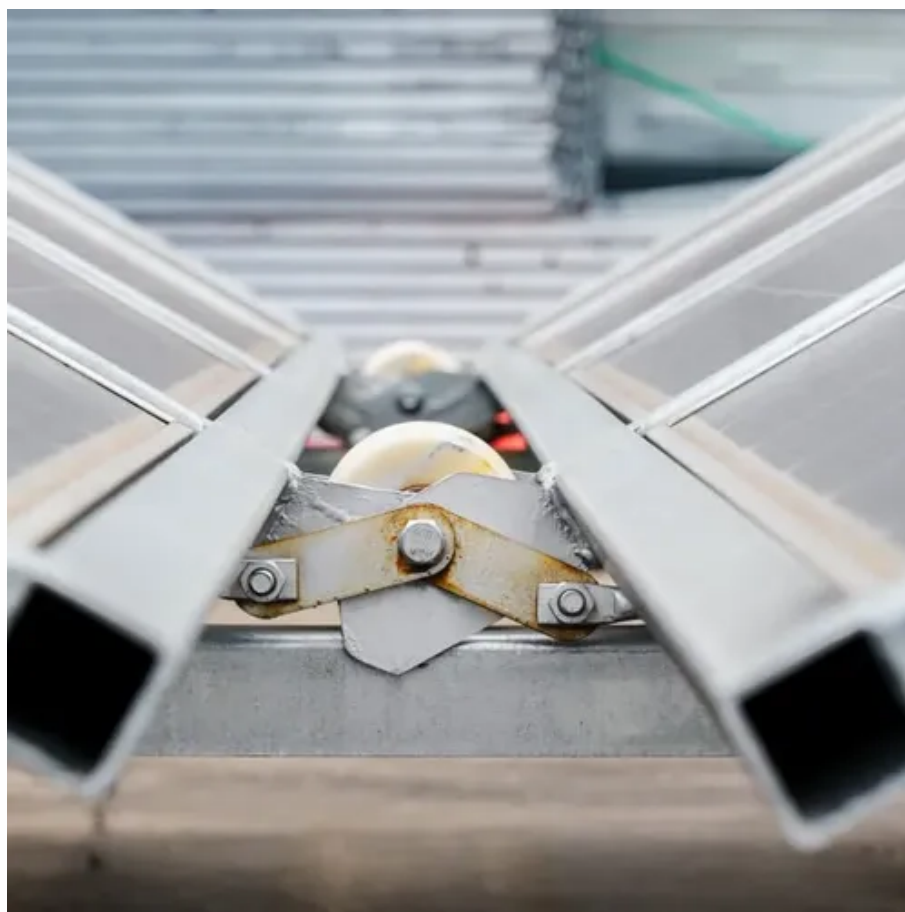




# Use of substation generator





## Overview

---

When generators are pre-positioned at the substation, they can be activated to energize distribution circuits and maintain service to customers during transmission outages. For rural electric cooperatives, municipal power systems, and even investor-owned utilities seeking flexible capacity solutions, substation-sited generation offers a compelling value proposition—often delivering multiple benefits simultaneously from a single installation. COMMENTARY Mesa Power. View of a 50 Hz electrical substation in Australia, showing three 220 kV/66 kV (150 kVA) transformers. Steel lattice structures support strain bus wires and apparatus, and transformer fire barriers prevent catastrophic failure of any one transformer from damaging adjacent units. Voltage transformation is essential in power systems. For balanced three-phase systems, the real power transferred is:  $P = \sqrt{3} V_L I_L$ . While substations are used for several distinct system functions, most utilize electric power transformers to adjust voltage to match varied voltage requirements along the supply chain.



## Use of substation generator



### Substation

OverviewTypesConstructionDesignComponentsMaintenanceAutomationFurther reading

Substations typically serve at least one of the following purposes:

- o Increasing the voltage produced by electric power generation for efficient transmission over long distances, using step-up transformers
- o Interconnection of different power grids
- o Reducing the voltage from transmission to lower-voltage distribution lines that supply individual homes or businesses

### [How It Works: Electric Transmission & Distribution and Protective ...](#)

Substations serve as critical nodes connecting generation, transmission, and distribution networks. While substations are used for several distinct system functions, most utilize electric power ...



### [Understanding the Role of Substations Along the Transmission Path](#)

Because step-up and step-down substations serve complementary roles in moving bulk power efficiently from generators to end-users, we'll start by examining both of them together.



### [Generator Sets in Substations: Key Applications and Industry Insights](#)

When asking " Are there generator sets in the



substation? ", the answer reveals a critical layer of modern power infrastructure. Substations increasingly integrate generator sets as backup power ...

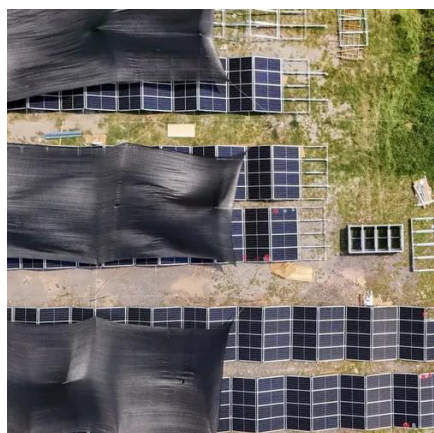


## Types of Substations and Functions

As the demand for electrical power continues to grow, it can be met through power generation substations. There are different types of power generation substations, including thermal, nuclear, ...

## Understanding Electrical Substations

Substations receive high-voltage electricity from power stations or transmission lines and reduce the voltage to safer and usable levels for local distribution. Substations also play a crucial role ...



## Substation

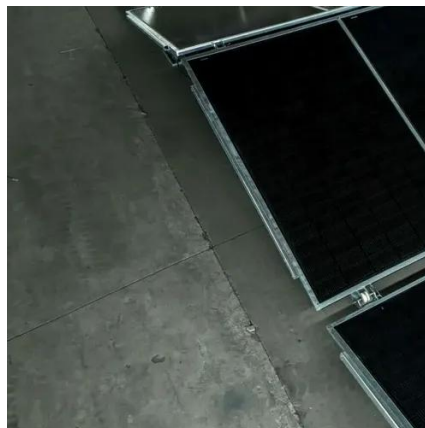
Substations transform voltage from high to low, or the reverse, or perform any of several other important functions. Between the generating station and the consumer, electric power may flow through several ...

## [Substation-Sited Generation: A New](#)



## Frontier for Utility Resilience and

Substation-sited generators offer a practical solution for adding peaking capacity precisely where it enters the distribution system. A key advantage of this approach is fuel flexibility.



## **Understanding Electrical Substations: Types and ...**

Electrical substations are a crucial component of electricity networks and are designed to both generate electricity and distribute it to end users.

## The basic things about substations you MUST know in the middle of ...

In a less simple way, substation is the key part of electrical generation, transmission, and distribution systems. Substation transforms voltage from high to low or from low to high as ...



## **What is a substation? , National Grid**

One of the main roles of substations is to convert electricity into different voltages. This is needed so the electricity can be transmitted throughout the country and then distributed throughout local ...

## The basic things about substations you



## MUST know in the middle of ...

Because step-up and step-down substations serve complementary roles in moving bulk power efficiently from generators to end-users, we'll start by ...





## Contact Us

---

For catalog requests, pricing, or partnerships, please visit:

<https://firmaskrzypek.pl>

Phone: +48 22 426 71 90

Email: [info@firmaskrzypek.pl](mailto:info@firmaskrzypek.pl)

Scan the QR code to access our WhatsApp.

