



Usage of photovoltaic panel controller





Usage of photovoltaic panel controller



[MPPT Solar Charge Controllers: How They Work, Uses & Benefits](#)

MPPT solar charge controllers play a major role in how efficiently a system converts solar power into usable battery energy. For installers, understanding MPPT technology helps you design ...

[Photovoltaic Controllers: Key Components and Features](#)

Photovoltaic controllers manage and regulate the electricity produced by solar panels in a solar power system. Its main functions include supervising the charging and discharging of the battery to ensure ...



[How to use solar photovoltaic controller . NenPower](#)

Consequently, solar PV controllers ensure a balanced and effective energy management strategy that maximizes the use of solar energy. A solar PV controller operates by optimizing ...

[What is a solar charge controller and why are they important?](#)

Solar charge controllers allow batteries to safely charge and discharge using the output of solar panels. A charge controller is needed any time a battery will be connected to the direct current



(DC) output of ...

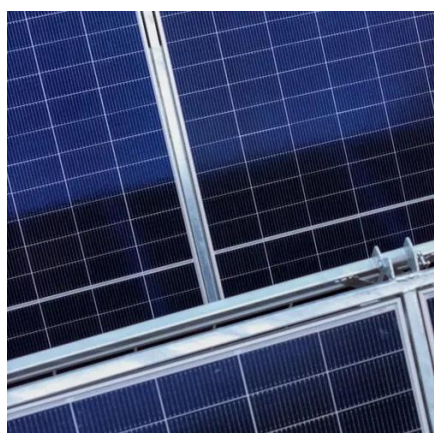


Solar Charge Controller 101: A Beginner's Guide

PWM controllers work best in "ideal" conditions -- warm, sunny weather. When the weather becomes colder, batteries operate at less efficient rates. A PWM controller is not able to ...

[Solar Charge Controller: Definition, Importance, and How it Works](#)

Solar panel controllers help maximize solar output in off-grid residential and commercial photovoltaic systems by regulating the optimal charging of batteries. This way, they prevent ...



[What are all the solar system controllers used for PV systems](#)

When solar panels generate electrical energy (DC) and store it in the battery, the charge controller monitors the battery's voltage. When the voltage reaches a certain value, it will reduce the ...

[What Is a Solar Charge Controller, and Do](#)



You Need It?

PWM controllers work best in "ideal" conditions -- warm, sunny weather. When the weather becomes colder, batteries operate at less efficient rates. A PWM controller is not able to ...



Solar Charge Controller 101: A Beginner's Guide

What does a solar charge controller do? Do you need one? This basic guide covers how a charge controller works and when you need it.

A Comprehensive Guide on Solar Charge Controllers

They can track the maximum power point of the solar panel, providing up to 30% more power than a PWM controller, and can work with any type of solar panel configuration. However, ...



[How to Use a Solar Charge Controller: A Comprehensive Guide](#)

Learn how to use a solar charge controller to optimize battery charging, prevent overcharging, and enhance the lifespan of your solar system.





Contact Us

For catalog requests, pricing, or partnerships, please visit:

<https://firmaskrzypek.pl>

Phone: +48 22 426 71 90

Email: info@firmaskrzypek.pl

Scan the QR code to access our WhatsApp.

