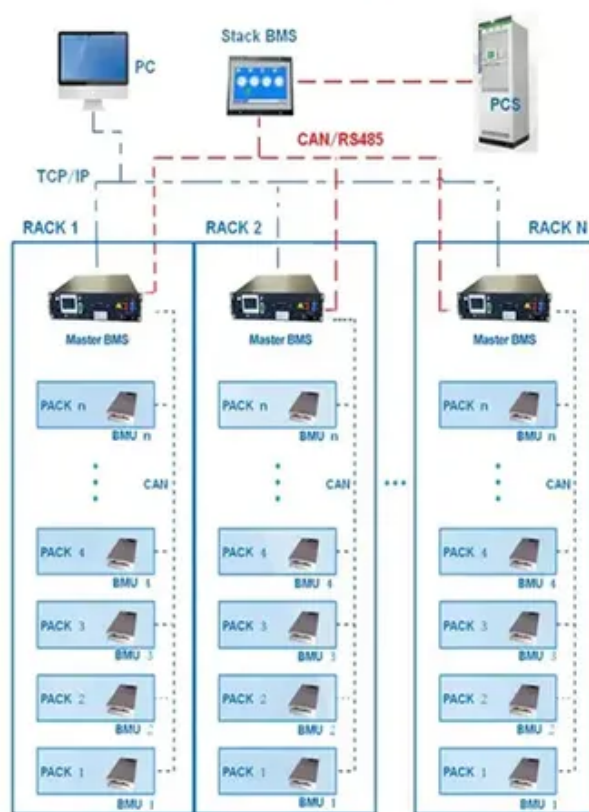




Tool battery weight

BMS Wiring Diagram





Overview

An ideal battery would be about the size and weight of a 500g butter tub, although some Li-ion batteries can weigh as little as 180g. There are now a number of small, lightweight tools on the market that run on very small cordless power tool batteries. Do you take multiple tools on site to install cabinets?

Then weight and size become very. Here is an older-style Dewalt 20V Max 4Ah battery, engineered with 10x 18650-sized Li-ion cells, each with 2Ah charge capacity. The sweet spot for storage is a cool, dry place, like a closet or basement shelf, ideally between 50-77°F. If you won't be using a battery for a few months. A Li-ion battery is half the size of a NiCd battery of the same battery capacity and voltage, and up to a fifth of the weight. NiMH batteries are also lighter than NiCd batteries. 0Ah battery, but this is a pretty big (and pricy) piece of equipment, so you'll want to know how much this battery weighs and which tools it works with before you commit to a purchase. How much does the Ryobi 18V 12Ah battery.



Tool battery weight



[Comparing Power Tool Battery Specs - Watt-Hours vs Amp-Hours](#)

Amp-hours are still useful for comparing batteries within any particular cordless power tool system, but watt-hours are better for comparing across different voltage systems, such as 18V vs ...

[What cordless power tool battery sizes and weights are available?](#)

Higher voltages and battery capacities increase the size and weight of a battery while newer technology can decrease the size and weight, allowing smaller batteries to be just as powerful and long-lasting. ...



[Power Tool Batteries: A Comprehensive Guide -- Triple-Batteries](#)

Power tool batteries have come a long way from bulky nickel-cadmium (NiCd) packs. Today, lithium-ion (Li-ion) technology dominates the market, offering greater power, longer runtimes, ...

Understanding Power Tool Batteries

Higher voltage batteries provide more power, allowing the tool to complete tasks more quickly and efficiently. However, this increased power may come at the cost of increased weight, ...



[How Heavy Is The Ryobi 18V 12AH Battery And Which Tools](#)

The biggest capacity 18V One+ battery that Ryobi currently makes is a 12.0Ah battery, but this is a pretty big (and pricy) piece of equipment, so you'll want to know how much this battery



[Battery Energy Density: Weight, Volume & Chemistry Insights](#)

In portable power tools, energy density --the amount of energy stored per unit of weight (Wh/kg) or volume (Wh/L)--is the single most important metric for maximizing runtime without

...



Understanding Power Tool Batteries

Understanding Cordless Battery Basics
Types of Cordless Batteries
Battery Charging Technology
Practical Tips For Cordless Battery Use and Maintenance
The Future of Cordless Tool Batteries
Frequently Asked Questions
How do I choose the right battery capacity for my cordless tool?
To choose the right battery capacity for your cordless tool, consider the power and run time needed for your projects. Battery capacity is measured in amp-hours (Ah), and a higher capacity means longer run times. Consider your project's size and intensity when selecting a



battery wit...What factors should I consider when comparing cordless battery brands?When comparing cordless battery brands, consider factors such as performance, reliability, and price. Look for batteries with good reviews and those that are compatible with your cordless tool. You can also check for warranties or customer support services offered by the brand. See more on essentialhomeandgarden Published: May 17, 2017 Wonkee Donkee Tools

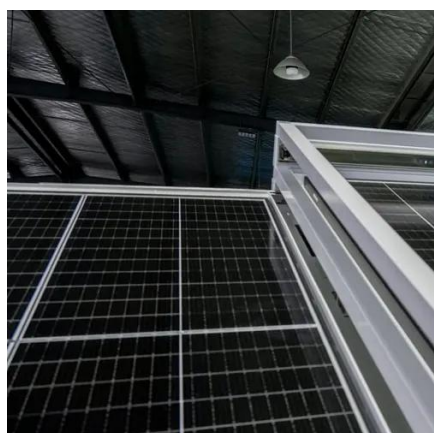
What cordless power tool battery sizes and weights are available?

See More

Higher voltages and battery capacities increase the size and weight of a battery while newer technology can decrease the size and weight, allowing smaller batteries to be just as powerful ...

[Power Tool Battery Guide: What Brands Actually Last? \[2025 Tests\]](#)

Quality batteries from leading brands charge up to five times quicker than regular ones, usually taking less than an hour. This lets you spend more time on the actual work. Top brands like ...



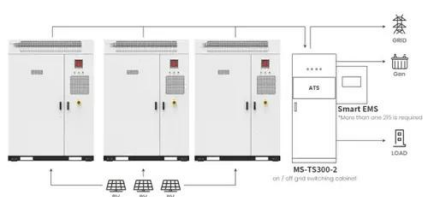
[Cordless Power Tool Buying Guide: How to Choose Battery Type](#)

Shoppers should consider these battery shapes when they feel the weight and balance of a tool in their hands. When it comes to ordering replacement batteries, knowing the shape of your battery will help ...

[These Are 5 Of The Lightest DeWalt Power Tool Batteries](#)



Battery power is great, but batteries add some weight to a tool. You can mitigate that, though, by opting for one of DeWalt's lightest batteries.



Application scenarios of energy storage battery products

Cordless Battery Buying Guide

Is your work primarily in a workshop or around the home? If so, the weight and size may not matter as much. Do you take multiple tools on site to install cabinets? Then weight and size ...



Contact Us

For catalog requests, pricing, or partnerships, please visit:

<https://firmaskrzypek.pl>

Phone: +48 22 426 71 90

Email: info@firmaskrzypek.pl

Scan the QR code to access our WhatsApp.

