



Tool battery identification





Overview

Different tools use different battery types. Common types are NiCad, NiMH, and Li-ion. NiMH batteries are better but still heavy. Always match the battery chemistry with the tool. University of Michigan researchers found that high temperatures can damage all battery components and might cause explosions. Quality batteries include smart Battery Management Systems (BMS) that track status live to stop overcharging, overheating, and short circuits. Every tool brand wants to keep you inside its ecosystem. Even when two batteries share the same voltage, which are actually identical in power — their connectors and locking tabs are not. Battery Interfaces: A Not-So-Universal Standard The battery interface is the physical connection between the battery and the power tool. Unfortunately, there's no universal standard, and each major brand typically has its own proprietary design. Carpentry, mechanical work and other construction projects are common. Power tool batteries are common in our daily lives and this passage gives you a detailed guide to buying your ideal power tool batteries, covering everything you need to know from differences between power tool batteries and ordinary batteries, to maintaining your batteries in top conditions. Using the wrong voltage can damage the tool.



Tool battery identification



Cordless Battery Buying Guide

Using the best battery for power tools ensures the modern toolbox never runs out of power. Learn about tool battery types and the best battery to use around the home.

[What Cordless Tool Batteries are Interchangeable: Ultimate Guide](#)

Knowing which ones work together can help you avoid frustration. In this guide, we will explore the world of interchangeable cordless tool batteries. We will discuss various brands and ...



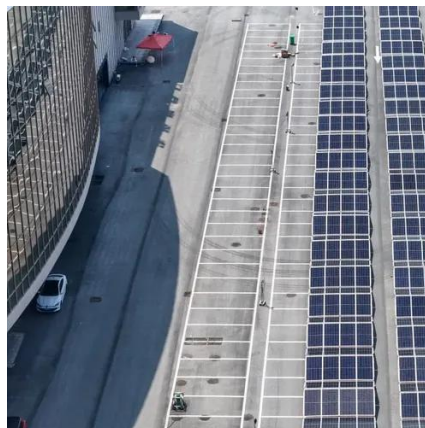
[Introduction to Power Tool Battery: Difference, Types and Key Factors](#)

This passage gives you a detailed guide to buying your ideal power tool batteries, covering everything you need to know from differences between power tool batteries and ordinary ...



[Cordless Power Tool Buying Guide: How to Choose Battery Type](#)

There are three major rechargeable battery technologies in use today for cordless power tools: nickle cadmium (NiCd), nickle metal hydride (NiMH), and lithium ion (Li-Ion).



What Cordless Tool Batteries are Interchangeable?

In this post, we'll explore the topic of what cordless tool batteries interchangeability in detail, and help you choose the right batteries for the job.

[Decoding the Power Tool Battery Maze: Interfaces and Chargers ...](#)

Choosing the right power tools can be a complex process, and one of the often-overlooked aspects is the battery system. Different manufacturers use different battery interfaces and ...



[WO/2025/165860 POWER TOOL BATTERY IDENTIFICATION WITH ...](#)

The pack interface is configured to receive a plurality of types of power tool battery packs, each different type of power tool battery pack corresponding to a different output capacity.

[Power Tool Battery Compatibility Chart -](#)



[Find What Fits What](#)

Explore our power tool battery chart and learn how adapters let you use DeWalt, Milwaukee, Makita, Ryobi, Bosch, and more across brands. Try our Battery Compatibility Finder now.

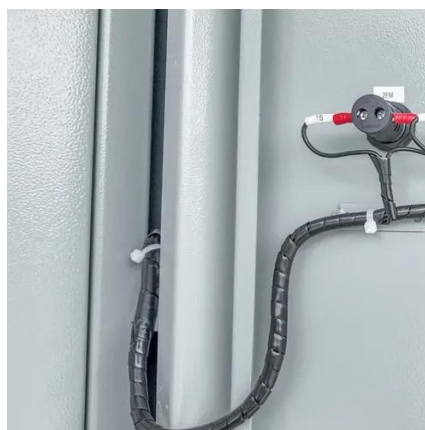


[Navigating the Power Maze: My Ultimate Power Tool Battery Guide](#)

For more insights into picking the right tools, skip over to our guide on power tools for beginners. And if keeping your gear in tip-top shape is on your mind, dive into our power tool ...

[Power Tool Battery Guide: What Brands Actually Last? \[2025 Tests\]](#)

8 Power Tool Battery Brands That Actually Last in 2025 I tested dozens of power tool batteries throughout 2025 and found eight brands that stand out in durability, efficiency, and overall ...





Contact Us

For catalog requests, pricing, or partnerships, please visit:

<https://firmaskrzypek.pl>

Phone: +48 22 426 71 90

Email: info@firmaskrzypek.pl

Scan the QR code to access our WhatsApp.

