



The whole process of photovoltaic support pile installation





Overview

Pile driving, the process of installing steel posts into the ground to support racking systems and solar modules, is one of the most critical steps in solar farm construction. The durability, accuracy, and efficiency of pile installation directly impact the long-term performance of a solar farm. This guide is tailored for pile driving contractors and engineers involved in solar farm projects—providing an in-depth exploration of the techniques, materials, and challenges associated with pile driving in this growing sector. Learn how modern engineering tackles foundation issues in renewable energy projects. Why Is Pile Driving Crucial. Prefabricated pipe pile photovoltaic support installation diagram gth concrete (PHC piles), steel piles and steel pipe screw piles. These systems could ight as a source of energy to generate electricity. A photovoltaic (PV) module is a packaged, and tems, play an +86-21- ity and anti-corro forefront of China"s PV mounting bracket indus cess and reduces installation time and.



The whole process of photovoltaic support pile installation

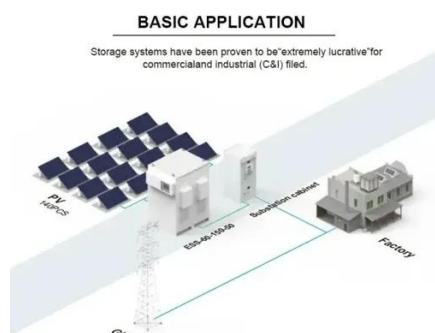


[Prefabricated pipe pile photovoltaic support installation diagram](#)

The pile-column structure of the bridge can be completed by prefabricated pile foundation, pier, and cap beam based on the integral assembly installation method.

[Photovoltaic Support Pile Driving Process: Modern Techniques for ...](#)

Meta Description: Explore the critical steps in photovoltaic support pile driving, including advanced techniques, common challenges, and data-driven solutions for solar farm stability. Learn ...

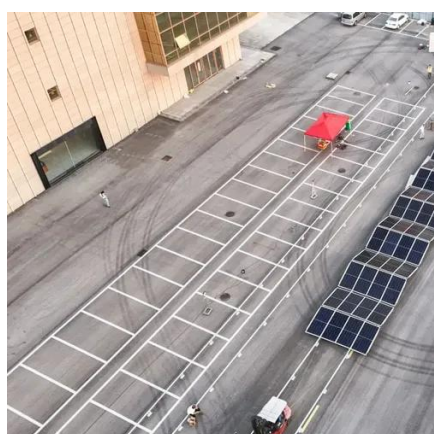


[Piling for Solar Parks: Building a Sustainable Foundation](#)

One critical aspect of their construction is piling, a process that ensures the stability and longevity of solar panel installations. Let's delve into what piling is, why it's essential, and how it ...

[Photovoltaic support installation cast-in-place piles](#)

As the demand for renewable energy increases--solar farms are becoming an ideal market for pile driving contractors due to the need for stable, long-lasting foundations that can support large-scale ...



[Pile Driving Best Practices in Utility-Scale Solar Construction](#)

Pile driving, the process of installing steel posts into the ground to support racking systems and solar modules, is one of the most critical steps in solar farm construction. The durability, accuracy, and ...

[Foundations of Solar Farms: Choosing the Right Piles and Installation](#)

This process involves applying a controlled load to the pile and measuring its response, ensuring that the foundation is capable of supporting the solar panels effectively.



[Pipe Pile Photovoltaic Support Installation: The Future of Solar](#)

As solar farms creep into more "interesting" geological locations, pipe pile photovoltaic support installation is becoming less of an option and more of a survival skill.

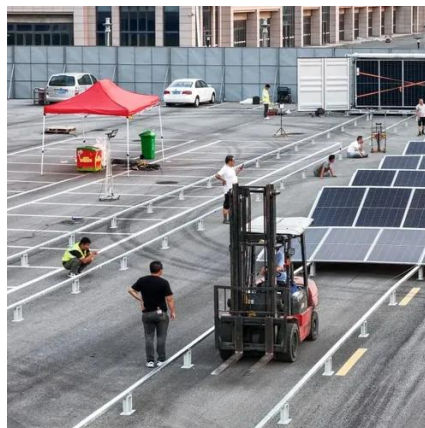


[How to drive piles at solar power](#)



construction site

Pile driving refers to the method of installing deep foundations that can support the structures of solar power installations. The process typically involves the use of driven piles which ...



12.8V 200Ah



Photovoltaic pile head bracket installation process

the piles can happen. There are an endless amount of pile brackets that can be mounted to the top of the helical pile to provide proper fastening/support for the specific utility line or structure

Detailed installation process of solar photovoltaic panel double piles

The main purpose of the solar photovoltaic power plant (SPVPP), with installed power of 500 kW on the roof of the factory GRUNER Serbian Ltd in Vlasotince, is to electrical supply of consumers in





Contact Us

For catalog requests, pricing, or partnerships, please visit:

<https://firmaskrzypek.pl>

Phone: +48 22 426 71 90

Email: info@firmaskrzypek.pl

Scan the QR code to access our WhatsApp.

