



The proportion of photovoltaic panel planting area





Overview

A simple rule of thumb is to take 100 sqft for every 1kW of solar panels. Extrapolating this, a 1 MW solar PV power plant should require about 100000 sqft (about 2. Abstract—The rapid deployment of large numbers of utility-scale photovoltaic (PV) plants in the United States, combined with heightened expectations of future deployment, has raised concerns about land requirements and associated land-use impacts. Yet our understanding of the land requirements of. Ground Covering Ratio (GCR) is a crucial metric in optimizing solar photovoltaic (PV) systems. 5 feet long, occupying an area of roughly 17. In order to estimate the area of solar panels needed, we start with the worldwide energy consumption value from 2021: 595.



The proportion of photovoltaic panel planting area

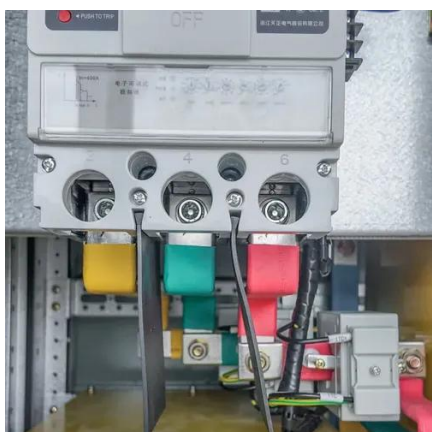


How Much Area Is Required To Set Up A Solar Power Plant?

Understanding the factors influencing the land area required for solar power plants is essential for effective planning. From technology choices to regulatory landscapes, various factors play a role.

How to design solar power plant layouts?

Energy drops, costs rise, and projects fail.

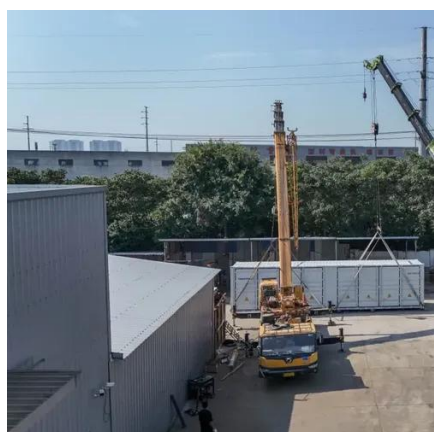


Worldwide Solar Area Requirement

While solar energy becomes more attractive as prices decrease, solar panels require sufficient surface area available to work. Let us make a simplified calculation to estimate the theoretical area of solar ...

Solar PV

Find up-to-date statistics and facts on the global solar photovoltaic industry.

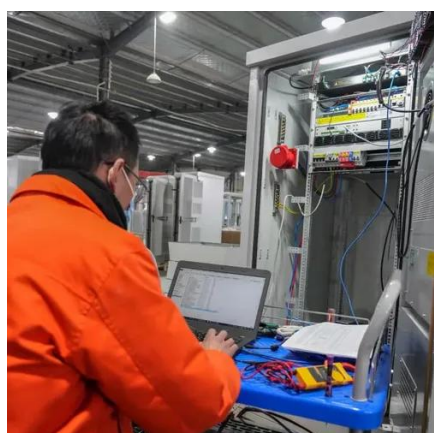


Area Required for Solar PV Power Plants

Solar power plants require significantly larger land areas compared to conventional power plants. A 100 MW thermal power plant for instance would require less than 10% of the total area that ...

[Understanding Ground Covering Ratio \(GCR\) in Solar PV Systems](#)

Ground Covering Ratio (GCR) is a crucial metric in optimizing solar photovoltaic (PV) systems. It measures the proportion of ground area covered by PV modules within an array.



[How much area is needed for solar panel installation](#)

To help you decide if your property is suitable for solar, this guide outlines roof space requirements and breaks down how to calculate the area needed for your home solar panel installation.

[The Required Land Area for Installing a](#)



Photovoltaic Power Plant

Till now the conversion efficiency of the commercial photovoltaic (PV) solar modules is in the range of 14 to 20%. Therefore, PV power plants need very large area to achieve the desired ...



Land Requirements for Utility-Scale PV: An Empirical Update on ...

We use ArcGIS to draw polygons around satellite imagery of each plant within our sample and to calculate the area occupied by each polygon.

The Required Land Area for Installing a Photovoltaic Power Plant

Selection of PV modules (especially the module efficiency) may play an important role in determining the area required for a PV power plant, the higher the efficiency the less the land area.





Contact Us

For catalog requests, pricing, or partnerships, please visit:

<https://firmaskrzypek.pl>

Phone: +48 22 426 71 90

Email: info@firmaskrzypek.pl

Scan the QR code to access our WhatsApp.

