



# The lithium battery pack loses power halfway through use





## The lithium battery pack loses power halfway through use



### [Why Do Lithium-Ion Battery Packs Lose Capacity Over Time](#)

Lithium-ion batteries lose power as they get older. This happens because of chemical aging, self-discharge, and temperature changes. Do not overcharge or drain your battery too much. ...

### [Why Do Batteries Wear Out? Scientists Finally Crack the Code](#)

Researchers have discovered the fundamental mechanism behind battery degradation, which could revolutionize the design of lithium-ion batteries, enhancing the driving range and lifespan ...



### **The Science Behind Lithium Battery Capacity Loss**

Understanding what causes capacity loss of lithium battery packs is essential for optimizing performance and extending service life in business-critical applications. You encounter ...

### [Lithium-Ion Battery Degradation Rate \(+What You Need to Know\)](#)

Discover why lithium-ion battery degradation is unavoidable, what it means for the end user, and how you can take action to prevent and mitigate the effects.



**TAX FREE**

## ENERGY STORAGE SYSTEM

**Product Model**  
HJ-ESS-215A(100KW/215KWh)  
HJ-ESS-115A(50KW 115KWh)

**Dimensions**  
1600\*1280\*2200mm  
1600\*1200\*2000mm

**Rated Battery Capacity**  
215KWH/115KWH

**Battery Cooling Method**  
Air Cooled/Liquid Cooled

### [Do Battery Packs Lose Power? Tips for Lifespan, Charge Retention, ...](#)

Yes, battery packs do lose power over time. This phenomenon occurs due to natural chemical processes within the battery. As battery packs age, their internal chemical reactions and ...

## Lithium Battery Self-Discharge: Causes, Effects

Learn why lithium batteries lose charge over time, the factors affecting self-discharge, and how to minimize energy loss.



### [Why Your Lithium Battery Drains So Fast and How to Stop It](#)

Before assuming your lithium battery is defective, it's important to understand the difference between normal and abnormal drain. Normal battery drain occurs naturally as energy is ...



## [Unpacking Power: A Comprehensive](#)



## Guide to Lithium-Ion Batteries ...

Li-ion batteries contain flammable electrolyte and store significant energy in compact volume. The main risks involve overcharging, physical damage, internal short circuits, and excess heat, all of which can ...

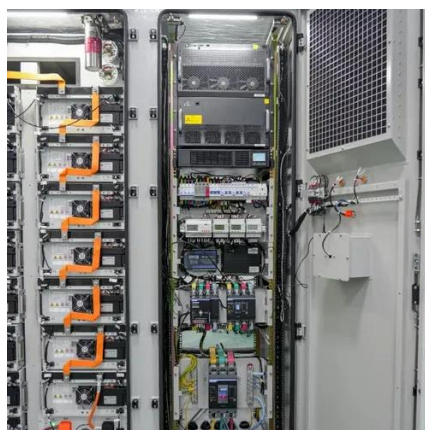


### **Can a Battery Still in Its Package Lose Its Power**

Even unused batteries gradually lose power due to chemical reactions inside them. In fact, alkaline batteries can lose 5-20% of their charge per year just sitting on a shelf. Lithium batteries fare ...

### **Lithium-Ion Battery Decline and Reasons For It**

High battery charging rates accelerate lithium-ion battery decline, because they cause thermal and mechanical stress. Lower rates are preferable, since they reduce battery wear.





## Contact Us

---

For catalog requests, pricing, or partnerships, please visit:

<https://firmaskrzypek.pl>

Phone: +48 22 426 71 90

Email: [info@firmaskrzypek.pl](mailto:info@firmaskrzypek.pl)

Scan the QR code to access our WhatsApp.

