



Stainless steel junction boxes





Stainless steel junction boxes



Stainless Steel Junction Boxes , McMaster-Carr

Choose from our selection of stainless steel junction boxes in a wide range of styles and sizes. Same and Next Day Delivery.

[Stainless Steel Enclosures , Stainless Steel Electrical Boxes](#)

Shop high-quality stainless steel enclosures for NEMA rated electrical applications. Shop a variety of stainless steel boxes and buy directly from Polycase.



Type 4X Stainless Steel Junction Box (C4XSC Series)

Hammond's C4XSC series of stainless steel junction boxes provide NEMA Type 4X protection of instruments and controls in indoor and outdoor applications. Constructed of 304 stainless steel, the ...

[Stainless Steel Terminal and Junction Boxes , nVent ...](#)

Industry-leading protection for systems incorporating large components or complex mounting configurations in highly corrosive environments.



Stainless Steel Enclosures

Category: Stainless Steel Clamp Cover Junction Boxes.

[Stainless Steel Explosion-Proof Junction Boxes \(IP66 Options\) for](#)

Learn how stainless steel explosion-proof junction boxes improve hazardous-area safety. See IP66 sealing, 304/316 options, grounding, and E-abel customization.

CE UN38.3 MSDS



JB Junction box 316 stainless steel

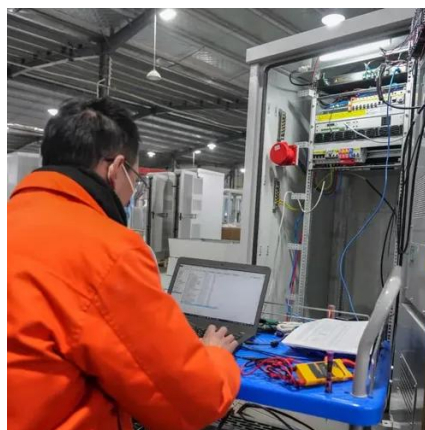
Stainless steel 1.4404 (AISI 316L). The JB enclosure offers protection for dense wiring and sensitive small instruments. These hinged cover junction boxes combine the advantages of the ...



Junction Boxes at Lowes



Find junction boxes at Lowe's today. Shop junction boxes and a variety of electrical products online at Lowes .







12.8V6Ah

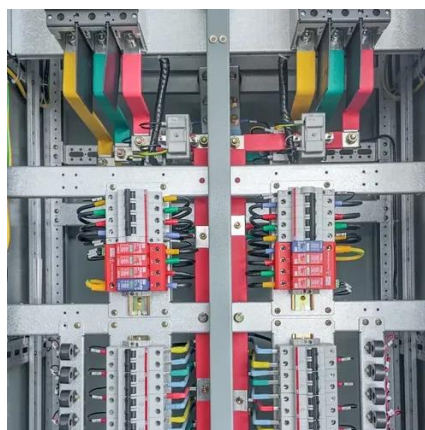
Nominal voltage (V):12.8
 Nominal capacity (Ah):6
 Rated energy (Wh):76.8
 Maximum charging voltage (V):14.6
 Maximum charging current (A):6
 Floating charge voltage (V):13.6-13.8
 Maximum continuous discharge current (A):10
 Maximum peak discharge current @10 seconds (A):20
 Maximum load power (W):100
 Discharge cut-off voltage (V):10.8
 Charging temperature (°C):-50
 Discharge temperature (°C):-20-+60
 Working humidity: <95% R.H (non condensing)
 Number of cycles (25 °C, 0.5c, 100%doD): >2000
 Cell combination mode: 32700-4s1p
 Terminal specification: T2 (6.3mm)
 Protection grade: IP65
 Overall dimension (mm):90*107*107mm
 Reference weight (kg):0.7
 Certification: un38.3/msds

Stainless Steel Enclosures (Type 4X)

Hammond Manufacturing is a leading manufacturer of industrial enclosures, electronic enclosures, racks & rack cabinets, transformers, outlet strips and climate control products.

Amazon : Stainless Steel Electrical Boxes

Stainless Steel Outdoor Electrical Box 20" x 12" x 10" - NEMA 4X/IP66 Waterproof & Dustproof, Lockable Titanium Steel Enclosure with Mounting Plate, Wall-Mounted Junction Box for ...





Contact Us

For catalog requests, pricing, or partnerships, please visit:

<https://firmaskrzypek.pl>

Phone: +48 22 426 71 90

Email: info@firmaskrzypek.pl

Scan the QR code to access our WhatsApp.

