



Solar support steel plate material





Overview

The steel ground solar support structure consists of galvanized steel components engineered to withstand extreme weather conditions while maintaining structural integrity over decades of operation. Here are some of the standard components found in steel solar panel mounting structures: Base plate: the base plate is the foundation of the mounting frame, providing stability and support. It is usually a flat, rectangular steel plate bolted or welded to the ground or a concrete foundation. Did you know many of Kloeckner Metals' nationwide branches boast special processing capabilities. This article explores how steel-based mounting solutions form the backbone of modern solar projects while addressing critical factors like material selection, design optimization, and cost-efficiency. Solar panel steel frames are an essential component of successful solar.



Solar support steel plate material



What Steel Products go into Solar Installations?

Here is how specific steel components are used in solar projects, their applications, and the crucial metal processing techniques that contribute to the efficiency and durability of solar ...

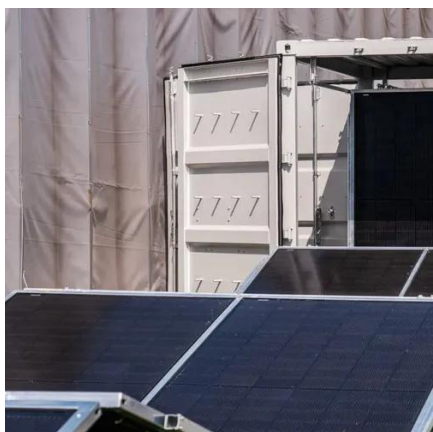
[Steel Profiles and Pipes in the PV Solar Industry: A Detailed Analysis](#)

In conclusion, steel profiles and pipes are indispensable components in the PV solar industry, providing the foundational support, structural integrity, and durability necessary for solar ...



[Photovoltaic Connecting Plate Steel Structure: The Backbone of ...](#)

Ever wondered what holds those shiny solar panels in place when Mother Nature throws her worst tantrums? Enter the photovoltaic connecting plate steel structure - the unsung hero of solar energy ...



[Solar Photovoltaic Support System Steel: Key Considerations for ...](#)

This article explores how steel-based mounting solutions form the backbone of modern solar projects while addressing critical factors like material selection, design optimization, and cost-efficiency.



Solar Panel Mounts , Products , Infra-Metals Co.

With our cutting-edge equipment and outstanding services, we at Infra-Metals deliver customizable steel mounting solutions for all your commercial and industrial solar projects.

Steel Mounting Frames in Solar Panel Installations

Choosing suitable materials for solar panel mounts is crucial to ensure long-lasting performance and durability. Galvalume and galvanised steel are popular due to their corrosion ...



Steel Ground Solar Support Structure: Durable Mounting Solutions for

Steel ground solar support structure manufacturers utilize premium-grade structural steel alloys specifically selected for galvanization compatibility and mechanical properties required for solar ...



Steel in Renewable Energy: The Backbone



of Solar Panels

Solar panel steel frames are an essential component of successful solar power systems, providing the support and stability required for solar panels to operate properly and provide clean

...



What to Consider When Choosing Steel Structures for Solar Panels in ...

Choose steel structures that offer strong support, durability, and corrosion resistance to ensure long-lasting solar panel installations. Match the steel type and coatings to your site's ...

Why a Steel Structure for Solar Panels is Essential for Durability and

Steel structures provide sturdy support for solar panels, ensuring they stay put when the wind blows. Strong, durable, and rust-resistant, steel is the superhero of framing materials that solar panels rely on.





Contact Us

For catalog requests, pricing, or partnerships, please visit:

<https://firmaskrzypek.pl>

Phone: +48 22 426 71 90

Email: info@firmaskrzypek.pl

Scan the QR code to access our WhatsApp.

