



Solar roof support basics





Overview

Evaluating your roof's structural integrity, orientation, material, and age is essential before proceeding with a solar panel installation. This article covers the critical factors you need to assess to determine if your roof can safely and effectively support solar panels. Your roof needs a minimum live load capacity of 20 pounds per square foot after installation. shingle), structural condition, and proper weight. As a homeowner, do you intend to install solar panels on your roof?

This is the appropriate spot for you if that's the case. Tesla's power producing photovoltaic (PV) roofing Tiles are visually indistinguishable from the non-power producing metal or glass roofing Tiles, enabling homeowners the ability to harvest solar energy without aesthetic. The decision to install solar panels begins with a single question: Can My Roof Support Solar Panels?

This article guides homeowners through structural, aesthetic, and regulatory factors to determine roof suitability and next steps for solar installation. Begin with a basic visual and informational.



Solar roof support basics



[How to Prepare Your Roof for a Solar Panel Installation](#)

In this guide, we'll walk through the steps you should take to prepare your roof, the role of inspections, and why attention to detail, even down to tasks like roof drilling, matters for your ...

The Complete Guide To Rooftop Solar Mounting [2025]

Mounting solar panels on a roof surface to create a solar power system is known as rooftop solar mounting. Solar panels can't be put on a roof without first having mounting brackets ...

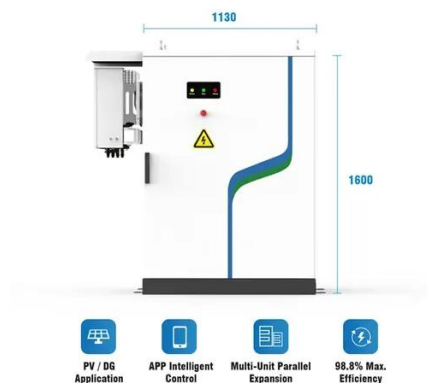


[Can My Roof Support Solar Panels: How to Tell and What to Do](#)

The decision to install solar panels begins with a single question: Can My Roof Support Solar Panels? This article guides homeowners through structural, aesthetic, and regulatory factors to ...

Roof Anchor System for Solar Panels

A guide for choosing, installing, and flashing roof anchoring systems for solar panels.



Solar Roof Design and Construction Guide

Solar Roof is a building-integrated photovoltaic (BIPV) system that incorporates photovoltaic (PV) tiles as roof coverings to generate on-site electricity for the building. Solar Roof utilizes visually ...



[How To Mount Solar Panels To The Roof: Complete 2025 Guide](#)

Learn how to safely mount solar panels to your roof with our step-by-step guide. Covers all roof types, tools needed, safety tips, and when to hire professionals.



[Does Your Roof Support Solar Panels? Load Capacity Requirements ...](#)

Learn if your roof can support solar panels. Discover load capacity requirements, weight considerations, and when reinforcement is needed before installation.

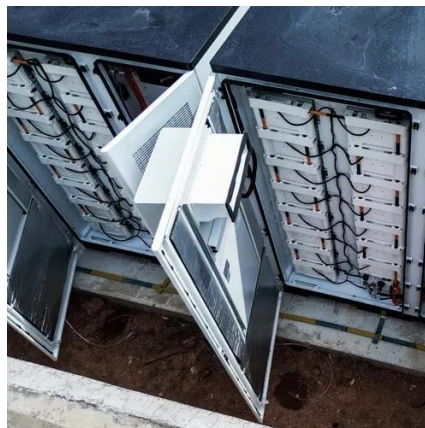


[Can Your Roof Support Solar Panels? Key](#)



[Factors to Consider for a ...](#)

Evaluating your roof's structural integrity, orientation, material, and age is essential before proceeding with a solar panel installation. This article covers the critical factors you need to assess to ...



[Solar Panel Roof Mounts: Types and Installation Guide](#)

In this guide, we'll explore the various types and installation techniques of solar panel roof mounts. Understanding the differences in mounting systems helps in making an informed decision ...

[What is the Best Solar Panel Support Structure? Complete Guide](#)

The foundation of any successful solar installation isn't the panels themselves--it's the support structure that holds them. Choosing the right solar panel support structure can mean the difference between a ...





Contact Us

For catalog requests, pricing, or partnerships, please visit:

<https://firmaskrzypek.pl>

Phone: +48 22 426 71 90

Email: info@firmaskrzypek.pl

Scan the QR code to access our WhatsApp.

