



Solar power generation shows no mains access





Overview

Fault phenomenon: The inverter is not connected to the grid, and the screen shows that the mains is not connected. Possible reasons: (1) The AC switch is not closed. The inverter battery system can supply alternating current (AC) to household appliances during peak grid demand. (3) When. The MDP has no main breaker and is 25 years old and located in a large church. We would like to keep this equipment for the expenses of replacement make this project a non starter. My back feed breaker will be 300 amps. Note: Tesla Solar Inverter does not have a. If you see a Microinverters Not Reporting system status in your Enphase App, it means that some or all of your solar panels are not sending data to the gateway.



Solar power generation shows no mains access



[How to solve the problem that the photovoltaic inverter shows no mains](#)

As one of the core components of the photovoltaic system, the normal operation of the photovoltaic inverter is crucial to the power generation efficiency of the entire photovoltaic system.

Inverter Not Switching To Mains (Solutions)

Something is wrong if the inverter does not automatically switch to "mains" power to recharge the battery bank. There are four possible reasons for this failure to switch to mains to ...

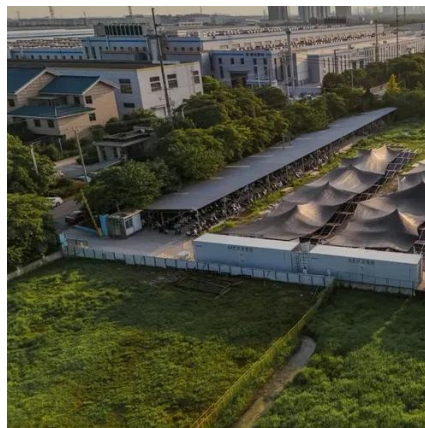


New system, Mate not displaying AC Input data

i'm familiar with main load centers have NEUTRAL and GROUND tied together and separated in sub-panels. when it comes to the Inverter and and the Generac i'm ignorant.

[Low Power Generation? Troubleshoot Your Solis Inverter](#)

Learn common causes and troubleshooting steps to optimize your Solis inverter's performance and maximize energy output.



PowMr Inverter does not recognize main feed

Hello people. I installed a POW-HVM3.2H-24V-N. It works ok without main but when main appears, Inverter does not recognize it. I did voltage measurements

Inverter Not Switching To Mains (Solutions)

As one of the core components of the photovoltaic system, the normal operation of the photovoltaic inverter is crucial to the power generation efficiency of the entire photovoltaic system.



Troubleshooting Your System , Tesla Support

If you see an error or lack of power on your Gateway, this indicates that your Gateway is not communicating with our servers. Until this is resolved, we cannot share your solar panel production ...



[Troubleshooting Guide: Why Isn't My Solar](#)



[Inverter Working?](#)

Experiencing problems with your solar inverter? Don't worry, you're not alone. Learn how to troubleshoot common inverter issues, perform basic fixes, and know when to seek professional ...



[Troubleshooting Guide: Why Isn't My Solar Inverter ...](#)

Experiencing problems with your solar inverter? Don't worry, ...

[How do you fix the Microinverters Not Reporting system error?](#)

How do you fix the Microinverters Not Reporting system error? If you see a Microinverters Not Reporting system status in your Enphase App, it means that some or all of your solar panels are not sending ...



[How to Troubleshoot a Solar System: 5 Easy Steps to Fix It?](#)

Many solar issues can be resolved with simple DIY checks, saving you time and costly repairs. In this guide, we'll walk you through five easy steps to troubleshoot common solar system problems, from ...

[PV load side connection without a service](#)



main breaker.

Main panels that are MLO and have no main service disconnect with OCP ahead of them are now not compliant; I doubt that an AHJ will permit you to land a PV breaker in one without ...





Contact Us

For catalog requests, pricing, or partnerships, please visit:

<https://firmaskrzypek.pl>

Phone: +48 22 426 71 90

Email: info@firmaskrzypek.pl

Scan the QR code to access our WhatsApp.

