



Solar panels connected to lithium batteries





Overview

Yes, you can charge a lithium-ion battery using a solar panel. Make sure the solar panel matches the battery's voltage and current requirements. Are you exploring ways to reduce your electricity bills, achieve energy independence, and contribute to a greener future?

The combination of solar panels and. To connect a lithium battery to a solar panel requires careful consideration of equipment and procedures. Properly connect components to avoid damage, 4. Follow safety protocols throughout.



Solar panels connected to lithium batteries



[How to Add Lithium Batteries to an Existing Solar System](#)

Integrating a lithium battery into an existing solar setup allows for better energy storage, backup power during outages, and increased energy independence. In this guide, we'll explore how ...

DIY Off-Grid Solar System with Lithium Batteries

In this guide, we'll learn the steps of building a DIY off-grid solar setup, and show the essential components you need, including lithium solar batteries and solar power kits to make the ...



[How to Add a Lithium Battery to an Existing Solar System](#)

In any solar installation, your panels produce direct current (DC) electricity. A solar inverter converts this to alternating current (AC) to power your home. In an AC coupled system, a ...



[Integrating Solar Panels with Lithium Battery Systems](#)

With the world steadily shifting towards sustainable energy solutions, the integration of solar panels and lithium battery systems represents a significant turning point. This combination is not just the epitome ...



How to Charge Lithium Batteries with Solar Panels?

Solar charging refers to the process of using sunlight to generate electrical energy through solar panels, which is then stored in lithium batteries for future use. It's an eco-friendly way ...

[How to Connect Solar Panels to Battery: Complete 2025 Safety Guide](#)

Connection sequence is critical for equipment safety - Always connect batteries to charge controllers before solar panels. This prevents controller damage and ensures proper system voltage ...



51.2V 300AH

[Charge a Lithium-Ion Battery with a Solar Panel: Tips, Insights, and](#)

To properly connect a solar panel to a lithium-ion battery, follow these steps: choose compatible components, use a charge controller, connect the solar panel to the charge controller, ...



[How to connect lithium battery to solar](#)



[panel , NenPower](#)

Once compatibility among the components is established, the next critical step is creating a secure connection between the solar panel and the lithium battery through the charge controller.

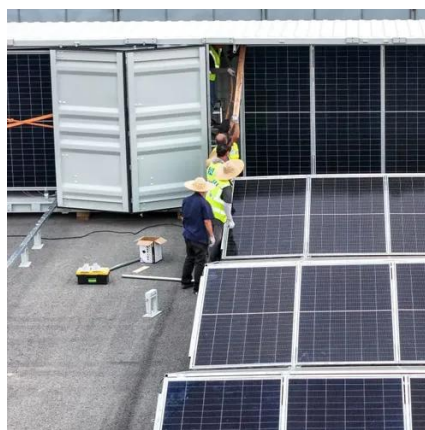


[How to Connect a Solar Panel to a Lithium Battery: A Step-by-Step ...](#)

Discover how to seamlessly connect a solar panel to a lithium battery for a sustainable energy solution. This comprehensive guide explores the advantages of solar power, details different ...

Solar Panel and Lithium Battery

Solar Panels generate electricity using sunlight during the day. Lithium Batteries store any excess energy produced and make it available at night or during power outages. Together, they ...





Contact Us

For catalog requests, pricing, or partnerships, please visit:

<https://firmaskrzypek.pl>

Phone: +48 22 426 71 90

Email: info@firmaskrzypek.pl

Scan the QR code to access our WhatsApp.

