



Solar inverter open circuit voltage curve





Overview

An IV curve represents the relationship between the current (I) and voltage (V) of a solar panel: Open Circuit Voltage (Voc): The maximum voltage available from a solar panel when no current is flowing. These parameters are not just datasheet values; they define how solar panels interact with inverters, charge. An I-V curve is a graphical representation of measured current (I) and power as a function of voltage (V). I-V curve tracing is integral to your evaluation of PV module performance and diagnosis of degradation in power output. This ensures the proper operation of your system. Here's a fun way to understand it - imagine a water tank with a tap at the bottom. This formula applies a temperature coefficient specific to each panel to adjust the Voc and Vmp values from their standard test conditions (STC, 25°C), to any given.



Solar inverter open circuit voltage curve



[Industry Testing Methods for PV Modules and Strings](#)

An I-V curve tracer will test a module from open circuit to short circuit and all points in between under load. **IMPORTANT**, this will give you the most accurate indication of the health and performance of ...

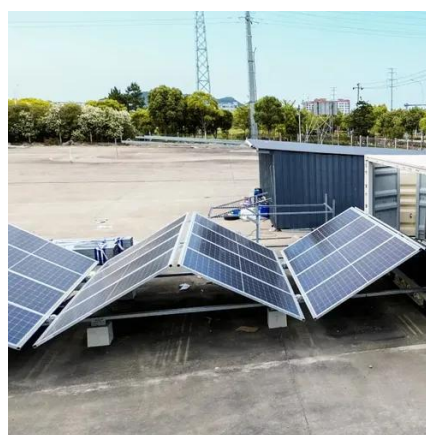


Open-Circuit Voltage

Understanding the nuances of Open-Circuit Voltage (Voc) and Short-Circuit Current (Isc) provides a clearer picture of solar panel performance. But what does it look like when we pit Voc against Isc?

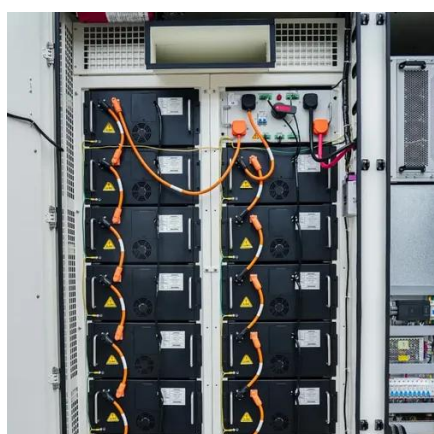
IV Characteristics of a Solar Cell

There are three critical points on the IV curve that merit attention. The open-circuit voltage (VOC) signifies the maximum voltage a cell can deliver in an open circuit (Absence of Load). The ...



What is I-V Curve Tracing? , Fluke

PV modules are rated with two different voltage values -- open circuit voltage and maximum power voltage. Open circuit voltage occurs whenever there isn't any load connected to the ...

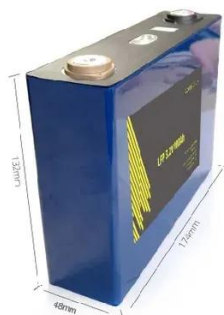


How to do iv curve testing solar?

IV curve testing is a vital procedure for assessing the performance of solar panels. By following the steps outlined in this guide, you can effectively measure and analyze the IV characteristics of solar panels, ...

[The Highs and Lows of Photovoltaic System Calculations](#)

PV modules are rated with two different voltage values -- open circuit voltage and maximum power voltage. Open circuit voltage occurs whenever there isn't any load connected to the ...



[Voc and Vmp Calculations in Inverter Tool Tab - OpenSolar](#)

OpenSolar models the impact of temperature on Voc (open circuit voltage) and Vmp (max power voltage) using a linear derating formula. This formula applies a temperature coefficient specific to ...

[I-V Curve -- What It Reveals About Solar](#)



Panel Performance

An I-V curve is created by sweeping a solar module or string through a range of electrical loads--from short-circuit (0V) to open-circuit (0A)--and measuring the resulting current and voltage.



Inspection of String Circuit Current Tests for Solar PV Systems

Using the obtained IV curve, abnormalities in power generation can be identified. Here are some terms that are used in the IV curve's diagram. Open-circuit Voltage (Voc): Voltage when the solar panel is ...

Electrical Characteristics of Solar PV Systems: Voc, Isc, I-V Curves

This article breaks down fundamental solar PV principles including Open-Circuit Voltage (Voc), Short-Circuit Current (Isc), and the significance of I-V and P-V characteristic curves.



What is I-V Curve Tracing? , Fluke

Learn how solar cell I-V curve tracing works and how I-V curve tracers validate proper operation when testing PV systems.



Contact Us

For catalog requests, pricing, or partnerships, please visit:

<https://firmaskrzypek.pl>

Phone: +48 22 426 71 90

Email: info@firmaskrzypek.pl

Scan the QR code to access our WhatsApp.

