



Solar battery cabinet lithium battery pack is fully discharged and then recharged





Overview

So, when your battery is fully charged and the solar panels are still pumping out energy, the surplus electricity is fed back into the grid, and you get credits or even compensation for it. Allowing a lithium-ion battery to discharge below its safe voltage limit (typically under 3.0V per cell) causes permanent chemical damage, reduces capacity, and may make the battery unsafe or impossible to recharge.

What. Lithium-ion batteries, commonly known as Li-ion batteries, are widely employed in solar power kits, serving as excellent power sources for solar panels, rv leisure batteries, and trolling motor batteries. They are also suitable for powering tools during solar power maintenance. You can see my build details on this thread. Is this merely a myth, or is there some truth behind it?

Here, we unravel the mysteries surrounding the complete discharge of lithium batteries and its potential consequences.



Solar battery cabinet lithium battery pack is fully discharged and the



lithium ion

In it, he shows why and how our Lithium ion batteries die, how the manufacturers are developing additives to prolong the cell life, and how temperature and slow charge and discharge times cause ...

Is Fully Discharging a Lithium Battery Bad?

Discover what happens if a lithium battery is fully discharged and how to safely recharge 12V batteries to prevent permanent damage.



[When the Battery is Fully Charged, What Happens to the Excess ...](#)

So, when your battery is fully charged and the solar panels are still pumping out energy, the surplus electricity is fed back into the grid, and you get credits or even compensation for it.

[Is It Harmful To Completely Discharge A Lithium-ion Battery?](#)

Here, we unravel the mysteries surrounding the complete discharge of lithium batteries and its potential consequences. In the following sections, we will explore the science behind how ...



Battery Discharge: solar battery bank discharge ...

Discover five reasons why Battery Discharge occurs and learn to understand the Battery Discharge Curve and the different charge stages of a solar battery.

Is it Bad to Fully Discharge a Lithium-ion Battery

Lithium-ion battery packs should not be fully depleted and recharged frequently (deep-cycling). Utilizing only 20 or 30 percent of the battery's capacity before recharging significantly improves battery life.



[Sudden Battery cut off under load , DIY Solar Power Forum](#)

1C discharge is only every now and then. Batteries are specified for 2C discharge. I agree that the a logical explanation is a weak cell triggering the LVD. The only non-logical thing is that is ...

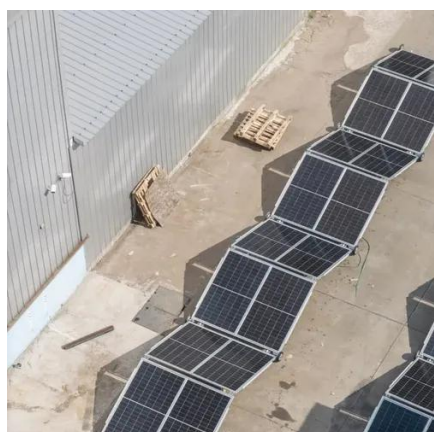


Is It Bad To Fully Discharge A Lithium



Ion Battery

Is it bad to fully discharge a lithium ion battery? Learn the effects of deep discharging, how it affects battery life, and the best way to care for lithium-ion batteries.



What Happens to Solar Power When Batteries Are Full?

Solar power generators use batteries to store the electricity they generate for later use. But what happens to that power when the batteries are full? Does it go to waste? Here, we look at ...

What Happens to Battery Packs that Sit Unused?

If it were me, I don't think I'd leave the battery stored long-term at full capacity as I don't think it's healthy for the battery. I'd also consider using an active balancing BMS (like the JK) so the ...





Contact Us

For catalog requests, pricing, or partnerships, please visit:

<https://firmaskrzypek.pl>

Phone: +48 22 426 71 90

Email: info@firmaskrzypek.pl

Scan the QR code to access our WhatsApp.

