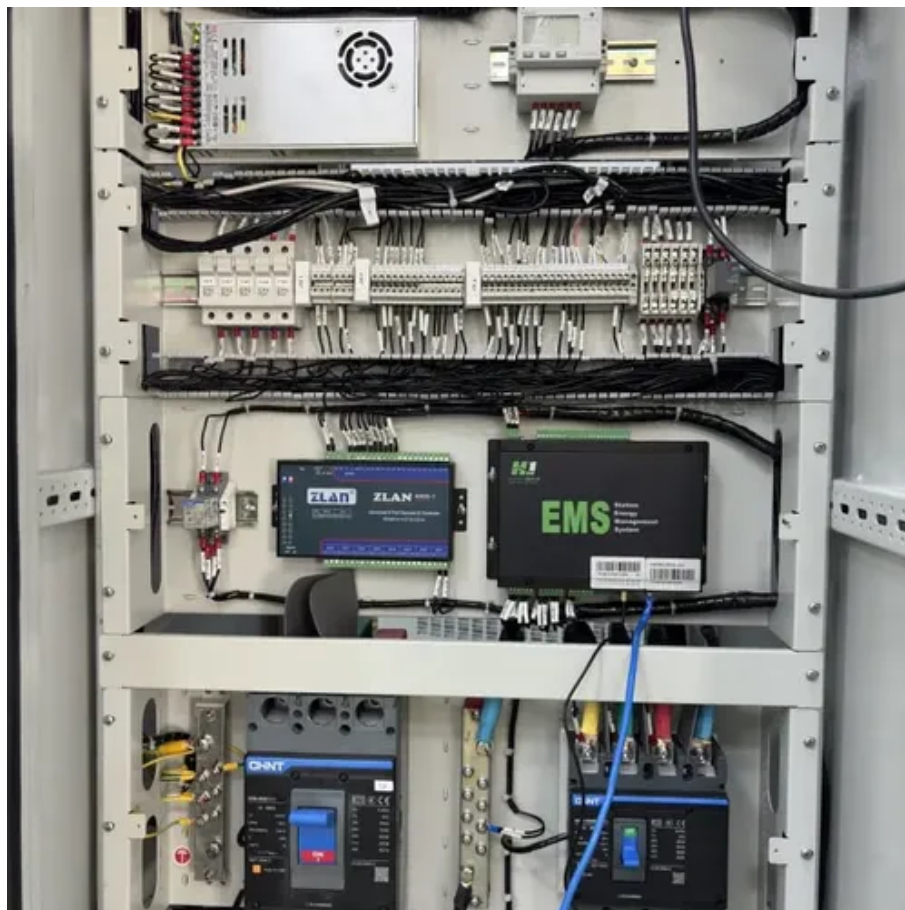




Solar Priority Inverter





Solar Priority Inverter



How to prioritize solar in a DC-coupled system

Since there is solar power, I want to first use solar power, and only when there is none or not enough solar power I want it to fall back to the grid. How can I do that?

[Solar Pumping Inverter with AC and Solar Priority 750W to 22KW](#)

After giving this some thought I was wondering whether I should change the priority in which the excess energy is used. In other words on a bright sunny day, I should set the priority to ...



Solar Priority Inverters

A solar-priority inverter is a type of hybrid inverter designed to maximize the use of solar energy by giving it precedence over stored battery power. When sunlight is available, the inverter routes solar ...

Solar & Wind Priority

The solar and wind priority function ensures that solar and wind energy are used to charge the battery. At the same time, shore power is only used to prevent the battery from becoming too deeply ...

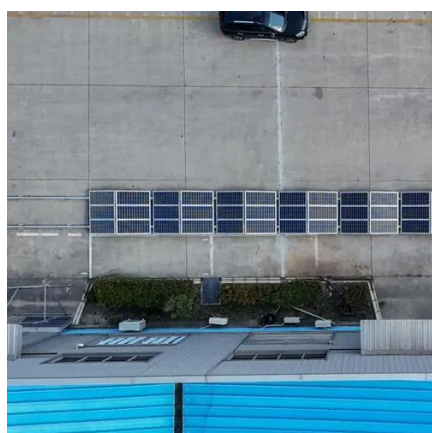


Hybrid Inverter Priority Modes

After giving this some thought I was wondering whether I should change the priority in which the excess energy is used. In other words on a bright sunny day, I should set the priority to ...

[Solar Pumping Inverter with AC and Solar Priority 750W to 22KW](#)

Solar pumping inverter integrates advanced functions such as Hybrid AC Power, Solar Priority, Remote Monitoring, Multi-pump Linkage, Low-input Voltage, etc. It can be directly installed outdoors without ...



[Demystifying Solar Inverter Jargon: A Clear Guide for Consumers](#)

This primer breaks down these common terms, explaining their meaning and relevance, so you can look beyond marketing buzz and choose an inverter that fits your solar-plus-storage needs.

BATTERY CHARGING PRIORITY



On my Voltronic inverter, can anyone please explain what under charge priority; Solar and Utility will charge the battery at the same time actually means



Utility priority output Vs SUB Vs Grid Shaving

AC Coupling in the past has been a feature reserved for higher priced products that allows strictly Grid-Tie inverters to sell back to the grid through the Hybrid inverter and the inverter can ...

How to Choose the Operating Mode of Solar Inverter?

Usually solar inverters have three working modes, PV (battery) priority, mains priority and ECO mode. So which working mode can maximize the use of photovoltaic energy and meet ...



- Voltage range: 691.2-947.2V
- >6000 cycles (100%DOD)
- Rated battery capacity: 216KWH (customizable)
- EMS communication: 4G/CAN/R5485

How to Select the Right Working Mode for an Off-Grid ...

Learn how to choose the right inverter mode for an off-grid solar system, including PV priority, and battery priority options.



Contact Us

For catalog requests, pricing, or partnerships, please visit:

<https://firmaskrzypek.pl>

Phone: +48 22 426 71 90

Email: info@firmaskrzypek.pl

Scan the QR code to access our WhatsApp.

