



Solar Power Generation Controller Instructions





Overview

View user manuals for all Solar Controller and Accessories, including PWM and MPPT solar controllers. ed in this document is believed to be accurate and reliable. However, Sola Edge assumes no responsibility for the use of this material. You may refer to the SolarEd I terms and conditions of delivery of. When contacting an Independent Authorized Service Dealer (IASD) or Generac Customer Service, always supply the complete model number and serial number of the unit. Thank you for purchasing a Generac PWRcell® product. The Generac PWRcell Inverter is a storage-ready inverter that connects to the PV. 1) the pressure ck whether drop of the installation pipeline. site complies with relevant safety requirements and avoid damp, dust, flammable, explosive and corrosive environment install the controller heat to dissipation of fixed the controller, on the vertical 10cm surface space isto reserved. ing Go Power! Solar Controller. The GP-PWM-10-SQ is rated for a continuous solar current input of 10 amps, uses Pulse Width Modulation (PWM) technology and a unique four stage charging system that includes an optional.



Solar Power Generation Controller Instructions



[OOYCYOO 100 amp MPPT Solar Power Generation System ...](#)

? Easy installation, protection fully protect your battery pack for charging. ? Charging installation easy measures guidance intelligence. 1. Installation instructions.

User Manual

With battery power attached, the controller should power up and display information. Connect the solar wiring to the controller and remove the opaque material from the solar array.

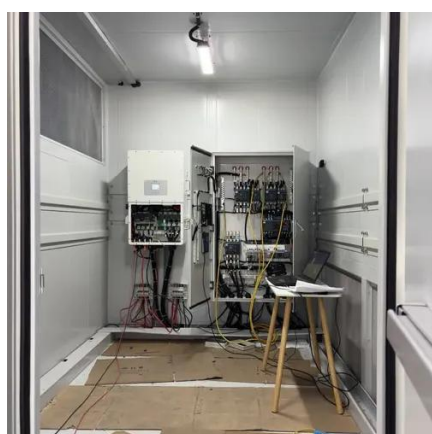


10 & 30AMP PWM SOLAR CONTROLLER

ABOUT THIS MANUAL thank you for choo ing Go Power! Solar Controller. This manual will provide you with all the information you need to properly instal and use your solar controller. This manual ...

[Managing Active/Reactive Power with a Power Plant Controller](#)

This document describes how to configure a Power Plant Controller (PPC) for use with SolarEdge inverters, in support of dynamic export limitation/zero feed-in requirements.



[User's Manual of DC/DC DC & MPPT Solar Charging Controller](#)

MD Series DC/DC& MPPT solar charging controller is based on multi-phase synchronous rectifier technology and advanced MPPT control algorithm, adopting all-digital intelligent design, which has ...

[PWM Solar Controller / User Manual : All PWM Controllers](#)

View user manuals for all Solar Controller and Accessories, including PWM and MPPT solar controllers.



GO POWER GP-PWM-10-SQ USER MANUAL Pdf Download

Use the wiring diagram to connect your battery to the battery terminals on the solar controller. First, connect the battery to the controller and then connect the solar panel to the controller.

Installation and Owner's Manual



This manual provides instructions for installing the PWRcell Inverter, including mounting, wiring, and battery integration information. The information in this manual is accurate based on products ...



Solar Edge Power Plant Controller Manual

The document provides instructions for configuring a SolarEdge Power Plant Controller to manage a photovoltaic power system that operates concurrently with an alternative power source such as a ...



Contact Us

For catalog requests, pricing, or partnerships, please visit:

<https://firmaskrzypek.pl>

Phone: +48 22 426 71 90

Email: info@firmaskrzypek.pl

Scan the QR code to access our WhatsApp.

