



Solar Photovoltaic Forest Land





Overview

This report provides a rapid assessment of potential conversions of forests to solar facilities. Introduction Anticipated growth in renewable energy will substantially curtail the US energy sector's greenhouse gas emissions but has implications for land-based sectors of the economy. US climate. Solar farms are an excellent way to do this. But current practices aren't doing enough to curtail their negative effects on natural land, and. Solar energy refers to the radiant light and heat from the sun that is harnessed using various technologies. Solar panels themselves typically consist of photovoltaic cells. Ground-based, utility-scale solar panel installations used for electricity generation of 1 MW or greater are commonly referred to as 'solar farms' (US Energy Information Administration, 2020). The purpose of the solar farm is to generate and sell electricity, therefore it is key that the. A 2023 Stanford study revealed something shocking: strategically placed solar panels in managed forests can increase overall energy production by 18% compared to open-field installations. How?

Through microclimate optimization - trees help regulate panel temperature like nature's AC system.



Solar Photovoltaic Forest Land



[Only about 4% of US solar projects are located on forested land, and](#)

While forests are invaluable for carbon sequestration and biodiversity, the claim that cutting down trees for solar panel installation negates climate benefits is misleading.

[Are We Sacrificing Our Forests for Solar? , EnergySage](#)

A new study reveals how solar farms impact forests and farmland--but they don't have to. Learn how we can expand solar energy while preserving nature and meeting climate goals.

Modular design,
unlimited combinations in parallel
BUILT-IN DUAL FIRE PROTECTION MODULE



[Solar Power or Forests? A Cost-Benefit Analysis of Forest Land](#)

This study conducts a cost-benefit analysis of replacing forest land with a large-scale solar (LSS) photovoltaic (PV) facility, using data from a proposed 9.35 MW DC project in the ...



Conservation Considerations for Solar Farms

Solar panels can significantly affect ecohydrology by redistributing moisture from precipitation and casting a significant amount of shade. Account for potential threats from noxious and invasive ...



The Impact and Benefits of Installing Solar Panels in Forest Areas

Solar energy stands out for its ability to generate electricity in a clean and sustainable way. However, the installation of solar panels in forested areas has generated debates about their ...

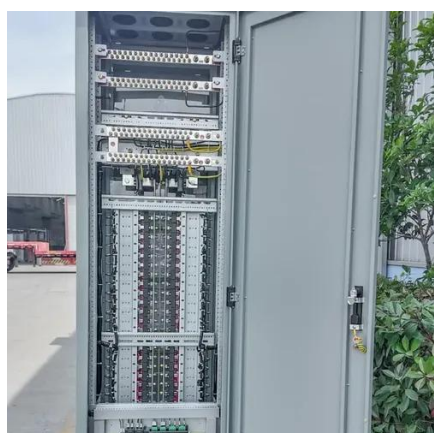
Converting Forests to Solar Facilities: Causes, Potential, and ...

US climate policies and energy markets now provide especially strong incentives for expanding solar photovoltaic (PV) capacity. As a result, conversion of agricultural and forested lands ...



Which forest land can be used to lay photovoltaic panels

Scientists in land-scarce Korea are proposing to use solar trees to build PV installations in forest areas. Although more expensive than conventional ground-mounted facilities, solar plants ...



Superior energy output of solar trees



compared to flat fixed panels in

The first thorough quantitative model to compare the installation of solar trees to conventional ground-mounted panels in coastal forest areas is presented in this study.

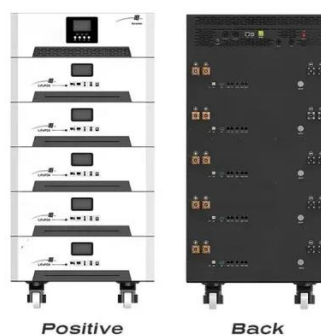


Can You Really Install Photovoltaic Panels in Forest Land? Here's the

When you picture photovoltaic panels installed in forest land, does your mind scream "tree massacre"? Hold that thought - modern solar tech is flipping the script.

Solar Panels in Wooded Areas: Opportunities & Challenges

Explore the balance of solar panel installation in wooded areas. Discover ecological impacts, technical challenges, and community insights on sustainable energy. ??





Contact Us

For catalog requests, pricing, or partnerships, please visit:

<https://firmaskrzypek.pl>

Phone: +48 22 426 71 90

Email: info@firmaskrzypek.pl

Scan the QR code to access our WhatsApp.

