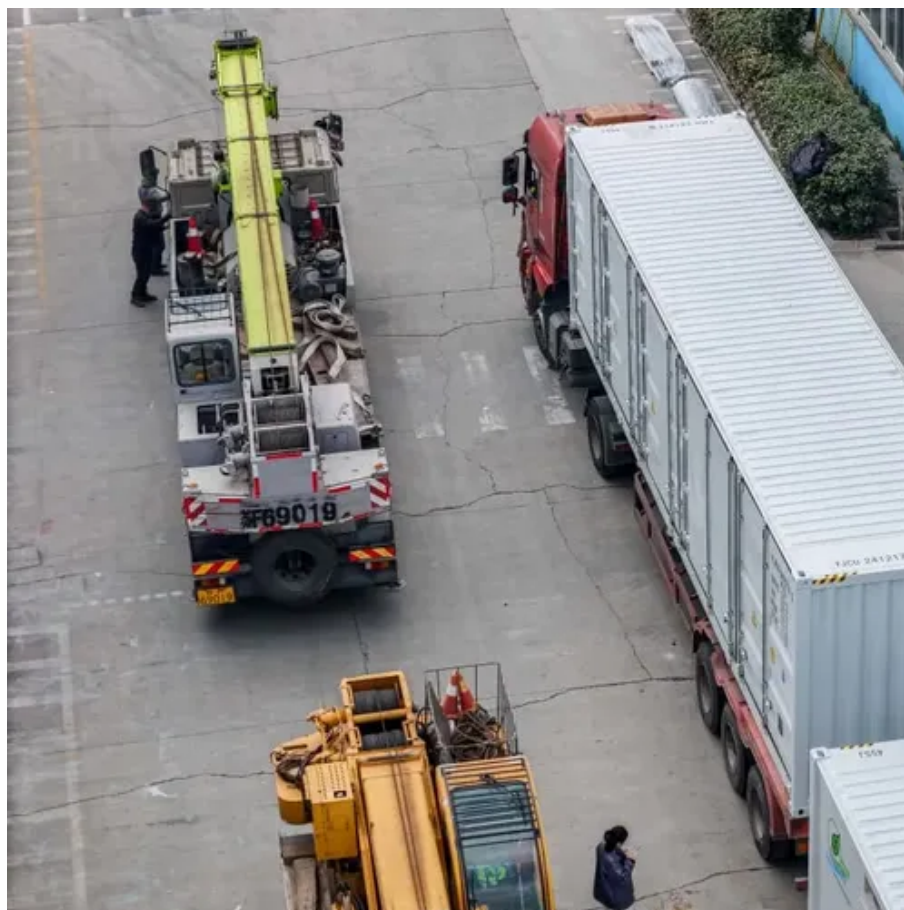




Single crystal silicon photovoltaic panel specifications and dimensions





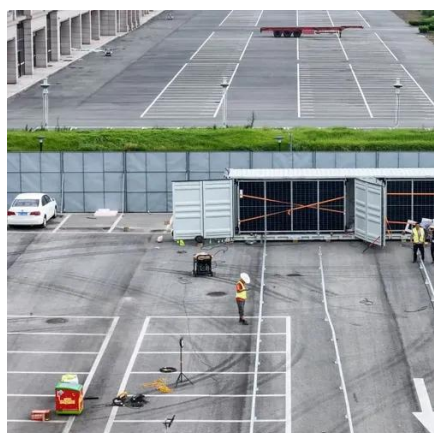
Overview

Monocrystalline Solar Panels are manufactured in 60, 72, and 96 cell configurations with a solar efficiency between 15-25%. 5" (163, 194 cm), widths of 39", 51. This guide compares efficiency rates, analyzes market trends, and provides practical selection tips for residential, commercial, and industrial applications. Exceptional low-light performance and high sensitivity to light across the entire solar spectrum. 25-Year limited warranty on power output and performance. 5g Specturm according to EN 60904-3. [pdf] What are the. Home solar panels are usually made of 60 solar cells (or 120 half-cut solar cells) and can produce electricity from 250W to 400W. How long do monocrystalline solar panels last?

Both monocrystalline and.



Single crystal silicon photovoltaic panel specifications and dimension



[SINGLE CRYSTAL SILICON PHOTOVOLTAIC PANEL SIZE AND ...](#)

The dimensions of an average 380 Watt solar panel are about 78" x 39" x 1.4". Depending on the manufacturer the weight of a 380 Watt solar panel can range from 50 to 63 lbs. [pdf]

[Monocrystalline silicon photovoltaic panel specifications and dimensions](#)

When you're looking for the latest and most efficient Monocrystalline silicon photovoltaic panel specifications and dimensions for your PV project, our website offers a comprehensive ...



SINGLE PHOTOVOLTAIC PANEL SPECIFICATIONS AND ...

A single residential solar panel typically has 60 PV solar cells and measures 5.4 feet by 3.25 feet (65 inches long by 39 inches wide). The panels are between 1.5 to 2 inches deep.



[Single crystal photovoltaic panel specifications and dimensions table](#)

Monocrystalline solar panels are a popular type of solar panel that is made from a single crystal of silicon. They are known for their high efficiency and durability, which makes



BlueSolar Monocrystalline Panels

Low voltage-temperature coefficient enhances high-temperature operation. Exceptional low-light performance and high sensitivity to light across the entire solar spectrum. 25-Year limited warranty ...



[Monocrystalline silicon photovoltaic panel specifications](#)

Monocrystalline solar panels are made from a single crystal of silicon, which is a semiconductor material that can convert sunlight into electrical energy. When sunlight hits the surface of the panel, it excites ...



Solar Panel -

Lower LCOE 2% more power generation, lower LCOE Note: This publication summarizes product warranty and specification which are subject to change without notice

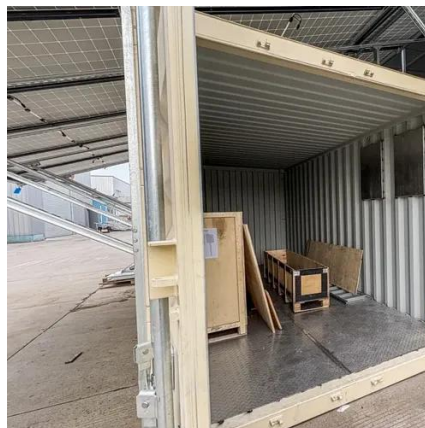


[Single Crystal Silicon Photovoltaic Panel](#)



[Models and Sizes: Complete](#)

Summary: Discover the latest models, dimensions, and technical specifications of single crystal solar panels. This guide compares efficiency rates, analyzes market trends, and provides practical ...



Solar Panel

Monocrystalline Solar Panels are manufactured in 60, 72, and 96 cell configurations with a solar efficiency between 15-25%. Monocrystalline Solar Panels have typical heights of 64", 76.5" ...

[Solar Panel Size & Dimensions Guide 2025](#) [. Complete Specs](#)

Complete guide to solar panel sizes and dimensions. Compare 60-cell vs 72-cell panels, weights, roof space requirements, and installation specs for 2025.





Contact Us

For catalog requests, pricing, or partnerships, please visit:

<https://firmaskrzypek.pl>

Phone: +48 22 426 71 90

Email: info@firmaskrzypek.pl

Scan the QR code to access our WhatsApp.

