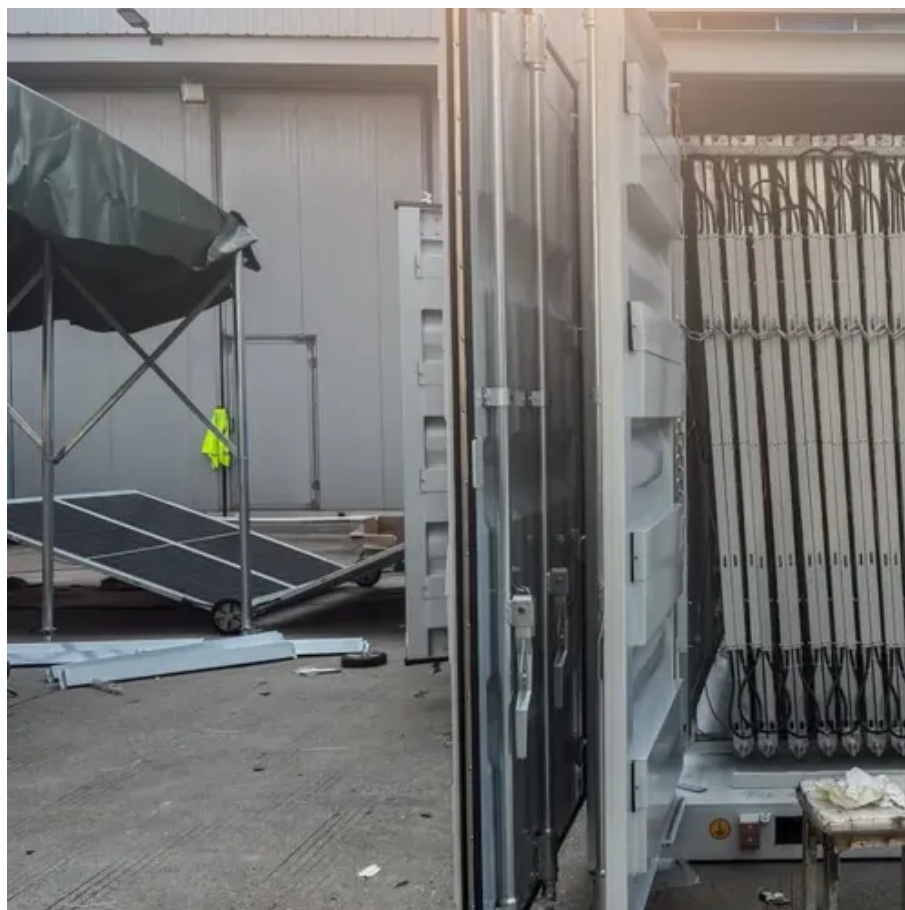




Should solar container lithium battery packs be connected in parallel or in series first





Overview

In actual use, lithium batteries need to be combined in parallel and series to obtain a lithium battery pack with a higher voltage and capacity to meet the actual power supply needs of the equipment. The right battery configuration for you depends on the energy needs of your device and your own. Here's a quick look at how each type of connection works: Series Connection = Voltage Adds Up, Capacity Stays the Same. To ensure the safety of both the batteries and the individual handling them, several important factors should be taken into consideration. This ensures that the same current flows through all the.



Should solar container lithium battery packs be connected in parallel



[Series vs. Parallel: How to Correctly Connect Your ...](#)

Unlock the ultimate guide to using LiFePO4 lithium batteries in series and parallel. Learn configurations, benefits, and tips for optimal performance!

[How to Effectively Connect Lithium Solar Batteries in Series and Parallel](#)

Connecting lithium solar batteries effectively can enhance energy storage systems, making them suitable for various applications. Understanding how to connect these batteries in ...



[Batteries in Series vs Parallel: What You Need to Know](#)

Series Connection = Voltage Adds Up, Capacity Stays the Same. Parallel Connection = Capacity Adds Up, Voltage Stays the Same. Attach the negative end of the first battery to the ...

WORKING PRINCIPLE



[18v solar container lithium battery pack series and parallel ...](#)

When setting up lithium solar batteries, understanding how to connect them in series or parallel is crucial for maximizing efficiency and performance. Below, we delve into the specifics of each configuration.



[Helpful Guide to Lithium Batteries in Parallel and Series](#)

If the lithium batteries are connected in series first and then in parallel, the failure probability of the large-capacity lithium battery pack is reduced. Stringing first and then paralleling is ...

[Solar container lithium battery solar energy storage series and ...](#)

Connecting lithium solar batteries in series or parallel is essential for customizing energy storage systems. In a series connection, the voltage increases while the capacity



[Series Vs Parallel Battery Connections , GSL Energy Battery](#)

Explore the differences between series and parallel battery connections, how to select the best setup for voltage and capacity needs, and learn how GSL Energy provides safe, reliable lithium ...

[10 series and two parallel solar container](#)



[lithium battery pack](#)

This article will analyze in detail the principles, methods and precautions of series and parallel connection of lithium batteries to help you avoid potential risks and build a battery system correctly.



[Lithium Solar Batteries Series vs Parallel Connection](#)

Is it better to use series or parallel connections for solar storage? It depends on your specific needs; use series for higher voltage requirements and parallel for increased capacity.

[Batteries in Series vs Parallel: Understand The Differences](#)

Batteries in a series or parallel configuration should be of the same type, capacity, and age for optimal performance and longevity. If you must replace a battery in an existing setup, it's best to replace all ...





Contact Us

For catalog requests, pricing, or partnerships, please visit:

<https://firmaskrzypek.pl>

Phone: +48 22 426 71 90

Email: info@firmaskrzypek.pl

Scan the QR code to access our WhatsApp.

