



# Shortwave communication base station wind and solar complementary





## Overview

---

The wind-solar-diesel hybrid power supply system of the communication base station is composed of a wind turbine, a solar cell module, an integrated controller for hybrid energy management for communication, a battery pack and an outdoor incubator for the battery. Solar and wind have strong complementarity in time and season: good sunlight and low wind during the day, no light and strong wind at night; high sunlight intensity and low wind in summer, low sunlight. HT SOLAR is a company dedicated to providing an efficient and reliable solution for powering cellular base. Can EMC communicate with a 5G network?

However, the communication operator builds the BS to complement the 5G signal, and the establishment of a communication BS does not mean the establishment of a dedicated power wireless network. EMC can also communicate by accessing a normal 5G network but at a. Trade-Off Between Renewable Energy Utilizing and In this paper, we design an electric-cellular collaborative network (ECCN) and formulate a joint optimization problem to minimize electric supply and QoS degradation costs, subjecting to Communication base station wind and solar complementary The. Feb 1, 2024 · The communication base station installs solar panels outdoors, and adds MPPT solar controllers and other equipment in the computer room. How to make wind solar hybrid systems for telecom stations?

Realizing an all-weather power supply for communication. Integrating the complementarity of wind and solar energy into power system planning and operation can facilitate the utilization of renewable energy and reduce the demand for power system flexibility [5, 6].



## Shortwave communication base station wind and solar complementary



### [Internet of Things communication base station wind and solar](#)

Do wind and solar resources have a complementarity metric system? To this end, we propose a novel variation-based complementarity metrics system based on the description of series' fluctuation ...

### [What is wind and solar complementary communication base stations](#)

The wind-solar-diesel hybrid power supply system of the communication base station is composed of a wind turbine, a solar cell module, an integrated controller for hybrid energy management for ...



### [Operating communication base stations with wind and solar ...](#)

This paper describes the design of an off-grid wind-solar complementary power generation system of a 1500m high mountain weather station in Yunhe County, Lishui City.

### [Deployment of communication base stations and wind-solar ...](#)

In this embodiment, the solar power generation equipment and the wind power generation equipment are used to complement each other to provide stable power for the communication



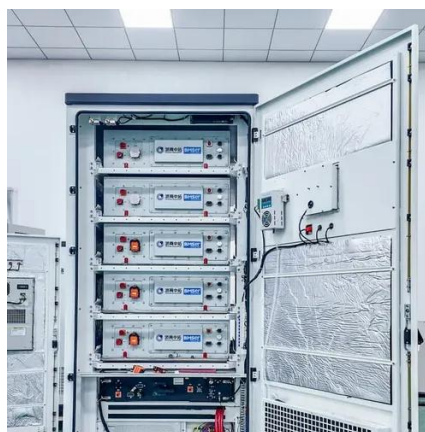
### What are the wind and solar complementary equipment for ...

It combines wind and solar power generation, city power and battery energy storage to provide green, stable and reliable communication base stations. Power is different from the traditional



### Communication base station wind and solar complementary ...

The invention relates to a communication base station stand-by power supply system based on an activation-type cell and a wind-solar complementary power supply system.



### What are the functions of wind and solar complementary ...

The wind-solar-diesel hybrid power supply system of the communication base station is composed of a wind turbine, a solar cell module, an integrated controller for hybrid energy



### The hidden rules of the wind and solar



## complementary industry for

Wind solar complementary system: prospects of wind solar The following series of wind solar complementary controllers aims to explore the prospects of wind solar complementary power ...



## **A WIND SOLAR COMPLEMENTARY COMMUNICATION**

How does a base station work?As shown in Figure S3 each user accesses a base station, and the BS then allocates a channel to each new user when there is remaining channel capacity.



## Contact Us

---

For catalog requests, pricing, or partnerships, please visit:

<https://firmaskrzypek.pl>

Phone: +48 22 426 71 90

Email: [info@firmaskrzypek.pl](mailto:info@firmaskrzypek.pl)

Scan the QR code to access our WhatsApp.

