



Server rack specifications for battery swapping stations 600mm depth





Server rack specifications for battery swapping stations 600mm dept



[6RU 600mm Wide & 450mm Deep Fully Assembled Wall Mount Server ...](#)

Side Panels of this rack are lockable & removable to ensure easy access to the mounted devices. The top and bottom panels of this rack include convenient cable routing ports. The rack ships fully ...

6RU 600mm Wide & 450mm Deep Fully Assembled ...

Side Panels of this rack are lockable & removable to ensure easy access to the ...



600mm Wide Server Cabinet - SharkRack

These 600 mm wide cabinets are available in several heights and depths. They provide flexible ways to mount servers, patch panels, routers, and other sensitive electronic devices reliably and securely.



Xtreme 27U IP54 Server Racks 600mm Wide 600mm Deep

A 27U IP54 server rack for applications requiring a 600mm wide by 600mm deep cabinet with an internal depth of 470mm with ingress protection to protect servers and IT networking equipment from dust ...

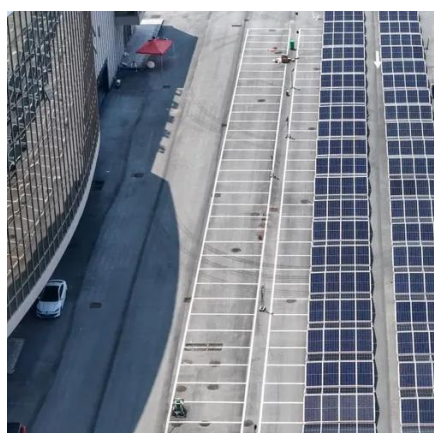


TS IT Rack Guide Specifications

7.2 universal mounting rails support installation of industry standard 19" rack mount server, network and electronic components, infinitely depth variable attached to depth stays.

24U Server Racks

24U Server Rack, 600mm wide & 800mm deep, 1670 lbs loading weight, Color : Black. Server rack, Server Racks, cabinet rack, frame rack, open rack, rackmount barebones server, RAID system.



[Battery Server Rack for ALPHA 5 PRO . 6-Slot Enclosed Battery Cabinet](#)

Features 600A protected busbars, rugged welded steel frame with powder-coated finish, multiple vents, and fully openable panels for easy wiring and cooling. Includes casters and leveling feet for mobility ...

OIP Server Rack 600mm Wide



Specifications

OIP Server Rack 600mm Wide Specifications PH:
+61 2 8068 8141 , FAX: +61 2 8084 9950 , ,
info@overip , 42 Princes Highway St Peters NSW
2044



12RU 600mm Wide x 600mm Deep Hinged Wall Mount Server Rack

Our 4Cabling 12RU 600mm Wide x 600mm Deep Hinged Wall Mount Server Racks have been designed as a cost effective data management solution for installers and customers who require quick ...



Rack ds.cdr

Enclosures are fabricated out of CRCA steel, CNC programmed, punched, bended, welded and powder coated with highest quality standards.



4U SERVER RACK CABINET, 600MM DEPTH - RackmountNet

With the casters loaded and the spring-loaded recessed handles, these simple server racks provide the ultimate mobility for your critical rackmount equipment. RACK600-J-4U also can equip an optional ...



Contact Us

For catalog requests, pricing, or partnerships, please visit:

<https://firmaskrzypek.pl>

Phone: +48 22 426 71 90

Email: info@firmaskrzypek.pl

Scan the QR code to access our WhatsApp.

