



Port-au-prince battery electric vehicles bevs





Port-au-prince battery electric vehicles bevs

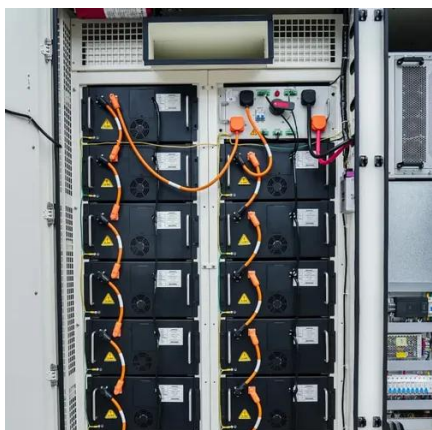


Types of Electric Vehicles: BEVs, PHEVs, HEVs

Battery electric vehicles, hybrids, plug-in hybrids - what's it all mean? Learn the difference between different types of EVs and how they work.

How Do All-Electric Cars Work?

All-electric vehicles, also referred to as battery electric vehicles (BEVs), have an electric motor instead of an internal combustion engine. The vehicle uses a large traction battery pack to power the electric motor and ...



Patrick Terminals

This Report documents the lessons learned during the first 6 months of the project, using BEV Terminal Trucks at Patrick Terminals in Fremantle Port.

MARINE NOTICE

This marine notice advises ship operators and owners of the hazards of transporting battery-powered electric vehicles (BEVs). While this information is targeted at ships operating on ocean going voyages, the risks ...



[What are Battery Electric Vehicles \(BEVs\)? Check How BEVs Work](#)

As the world shifts towards cleaner energy solutions, BEVs are becoming more popular among environmentally conscious consumers. In this article, we will explore what BEVs are, how they work, their ...



BATTERY ELECTRIC VEHICLES (BEVs)

Battery Electric Vehicles (BEVs), also referred to as 'all-electric vehicles' or 'pure electric vehicles,' run entirely on electricity only and have no gasoline engine. BEVs are moved by one or more electric motors powered by ...



ESS



[Battery Electric Vehicles Buying Guide - How to Choose the Ideal BEV](#)

With the world transitioning towards a cleaner future, battery electric vehicles (BEVs) are fast gaining popularity among car buyers who want their car to run on greener energy sources.

[Battery Operated Electric Vehicles \(BEVs\):](#)



[An In-Depth ...](#)

This article, written by Arpit Bohre, provides an in-depth examination of the essential components and working mechanisms of BEVs.



Port of Newcastle fleet heading all electric

In May 2020, the port took the first step in its transition to a fully electric fleet with the acquisition of four battery electric vehicles (BEVs). Six months later, the port was well along the way to its target of 100% ...

HYBRID AND BATTERY ELECTRIC VEHICLE COMPARISON

BEVs undoubtedly get drivers further for each charge. Comparing popular PHEVs and BEVs, some BEVs can have an electric driving range over nine times greater than PHEVs.





Contact Us

For catalog requests, pricing, or partnerships, please visit:

<https://firmaskrzypek.pl>

Phone: +48 22 426 71 90

Email: info@firmaskrzypek.pl

Scan the QR code to access our WhatsApp.

