



Photovoltaic pipe pile installation bracket specifications





Overview

Specifications for photovoltaic steel pile fixing brackets This is a specific stainless steel solar panel bracket for bent tiled roofs, 5mm thick with an adjustment from 6 to 9. What are the differences between drilled shaft and helical piles?

What equipment options are available for their i other critical factor in selecting the type of pile. PV installation is complete, ball bearings are driven. Impact driving is a traditional and widely used method in pile installation—where a heavy weight, or hammer, repeatedly strikes the top of the pile—driving it into the ground. And, large-scale solar farms can have hundreds of thousands of piles to be driven. This adjustable high bracket is suitable for all roofs.



Photovoltaic pipe pile installation bracket specifications



[Specifications for welding pile heads of photovoltaic brackets](#)

This study investigates the horizontal load-bearing properties of steel pipe piles used in offshore photovoltaic systems by conducting field tests with single-pile horizontal static loads and

[Foundations of Solar Farms: Choosing the Right Piles and Installation](#)

Projects requiring high load capacities--such as those with large, heavy solar panels or in regions with significant wind forces--may necessitate the use of concrete or composite piles. ...



[Photovoltaic pile head bracket installation process](#)

the piles can happen. There are an endless amount of pile brackets that can be mounted to the top of the helical pile to provide proper fastening/support for the specific utility line or structure

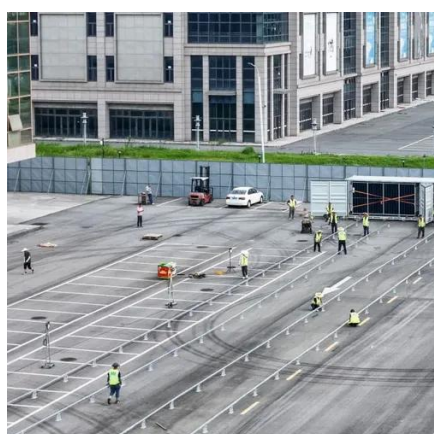
Photovoltaic pipe pile and bracket installation

Step-by-Step Pile Installation Process. The pile driving installation process begins with site clearing and preparation--which involves removing any vegetation, debris, or obstructions that could interfere with ...



Specifications for photovoltaic steel pile fixing brackets

Solar panel brackets are an essential component of any solar panel system. They are used to secure solar panels onto rooftops, ground mounts, or other structures.



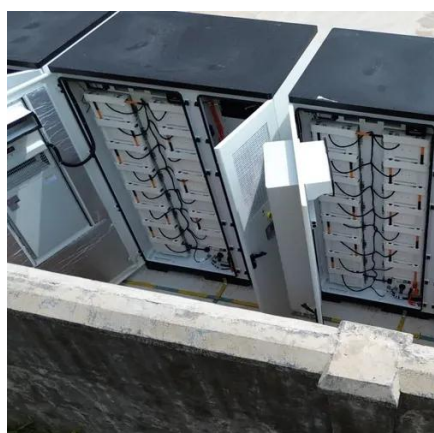
Photovoltaic ground bracket installation options

The installation selection of photovoltaic ground brackets is mainly based on factors such as the fixing method of the bracket, terrain requirements, material selection, and the weather ...



Photovoltaic pile support installation specifications

The installation selection of photovoltaic ground brackets is mainly based on factors such as the fixing method of the bracket, terrain requirements, material selection, and the weather

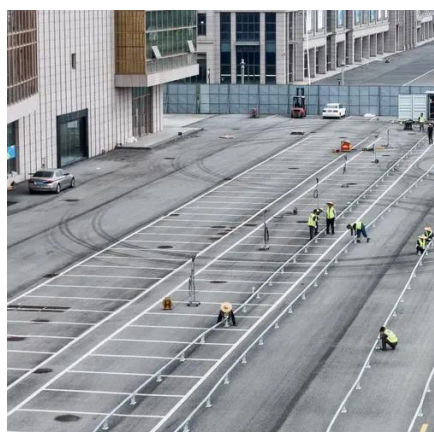


Photovoltaic support installation cast-in-



place piles

Are solar farms a good market for Pile Driving Contractors? As the demand for renewable energy increases--solar farms are becoming an ideal market for pile driving contractors due to the need for ...



Prefabricated pipe pile photovoltaic support installation diagram

The pile-column structure of the bridge can be completed by prefabricated pile foundation, pier, and cap beam based on the integral assembly installation method.



Contact Us

For catalog requests, pricing, or partnerships, please visit:

<https://firmaskrzypek.pl>

Phone: +48 22 426 71 90

Email: info@firmaskrzypek.pl

Scan the QR code to access our WhatsApp.

