



Photovoltaic panels facing south and north





Overview

In the United States, your solar panels should face true south, but east- or west-facing panels are still a viable option. Latitude-Based Angle Calculation. Solar panel orientation refers to the placement, direction, and angle of solar panels, specifying the cardinal direction the panel faces, which helps it receive direct sunlight throughout the day. The cardinal directions are the north, south, east, or west, and they depend on your location and the. In most cases, the best direction for solar panels is facing south 1. Arrays that are appropriately oriented can improve energy output by up to 30% or more 2. However, factors such as roof slope and proximity to the equator may have some homeowners considering other directions (including north).



Photovoltaic panels facing south and north



[Solar Panel Direction & Orientation: 2025 Complete Guide](#)

East or west-facing panels generate 75-85% of optimal output, and north-facing panels produce only 45-60% depending on latitude. The difference between optimal and poor orientation ...

[Best Direction for Solar Panels to Maximize Savings -- SolarReviews](#)

In the United States, your solar panels should face true south, but east- or west-facing panels are still a viable option. In the southern hemisphere, ...



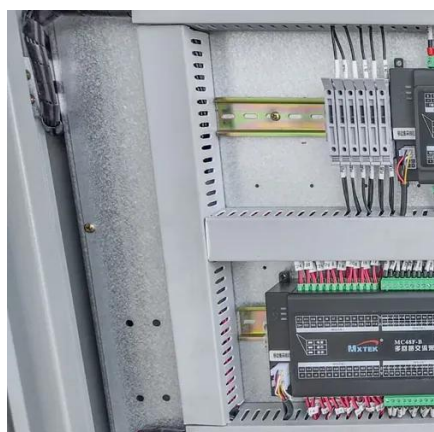
[Maximize Efficiency: Best Direction for Solar Panels , Sunrun](#)

Learn the best direction for solar panels to optimize energy efficiency and savings. Find expert advice on positioning your panels for maximum performance.



[Solar Panel Orientation: Everything You Need to Know](#)

The general rule for solar panel placement in the northern hemisphere is that solar panels should face true south (and in the southern, true north). This is usually the best direction ...



[What Direction Should Your Solar Panels Face? , Angi](#)

In the United States, your solar panels should face true south, but east- or west-facing panels are still a viable option. In the southern hemisphere, you'll want to face your panels true north. ...

What direction should solar panels face?

Whether you have a south-facing roof or need to explore alternative orientations, this guide provides the insights and strategies needed to optimize your solar panel placement for ...



[Which Direction Do Photovoltaic Roof Panels Most Often Face](#)

While south-facing panels maximize annual output in the northern hemisphere, east/west or other orientations can be more practical or financially optimal in many real-world scenarios.

The Best Direction For Solar Panels



to Face

In nearly all cases, homeowners will achieve the highest electric bill savings and a quickest payback period by facing their solar panels south over any other direction.



[Best Direction for Solar Panels to Maximize Savings -- SolarReviews](#)

Solar panels that face east or west will produce about 15% less energy than those installed on a south-facing roof. A north-facing roof is the worst direction for solar, as panels will produce around 30% ...

Solar Panel Orientation Guide

However, to truly maximize the benefits of your solar panel investment, proper orientation is crucial. This comprehensive guide will walk you through the key factors that impact solar panel ...



North-facing vs south-facing panels [UK, 2026]

In this guide, we'll compare north-facing solar panels with south-facing ones, take a look at a real-world example, and consider whether it's actually worth having a solar panel system that ...



Contact Us

For catalog requests, pricing, or partnerships, please visit:

<https://firmaskrzypek.pl>

Phone: +48 22 426 71 90

Email: info@firmaskrzypek.pl

Scan the QR code to access our WhatsApp.

