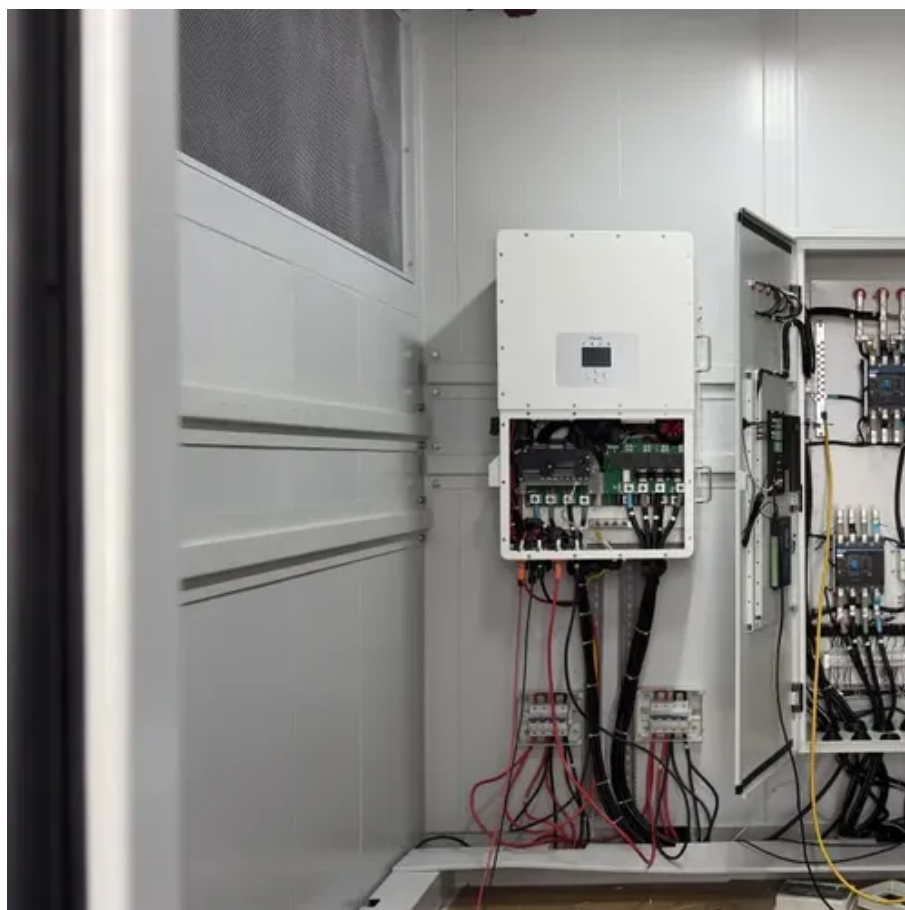




Photovoltaic panels belong to power facilities





Photovoltaic panels belong to power facilities



[Solar, photovoltaic and thermodynamic plants , Enel Group](#)

Photovoltaic power stations have a large number of electrically interconnected photovoltaic modules that make up so-called strings, which are connected to each other in parallel as ...

[Which category does photovoltaic panel power generation ...](#)

What is solar photovoltaic (PV) power generation? Solar photovoltaic (PV) power generation is the process of converting energy from the sun into electricity using solar panels. Solar ...



[What is a solar power plant? How it works and types](#)

The operation of a solar photovoltaic plant is based on photons and light energy from the sun's rays. The types of solar panels used in these types of facilities are also different. While solar thermal plants use ...



[Solar Photovoltaic Power Plant , PV plants Explained](#)

Distributed photovoltaic systems: These systems are made up of multiple photovoltaic panels installed in homes, businesses or smaller industrial facilities. The electricity generated is used ...



Solar PV Energy Factsheet

They usually have metal frames and weigh 34-62 lbs. 12 A PV array is a group of electrically connected modules fastened to a rigid structure. 13 BOS components include all ...



Photovoltaics and electricity

Solar photovoltaic cells are grouped in panels, and panels can be grouped into arrays of different sizes to power water pumps, power individual homes, or provide utility-scale electricity generation.



[What facilities are needed for solar power generation](#)

In summary, solar power generation requires a well-rounded approach with several essential components working together. Each aspect--from photovoltaic panels and inverters to ...



[Solar Photovoltaic Power Plant , PV plants](#)

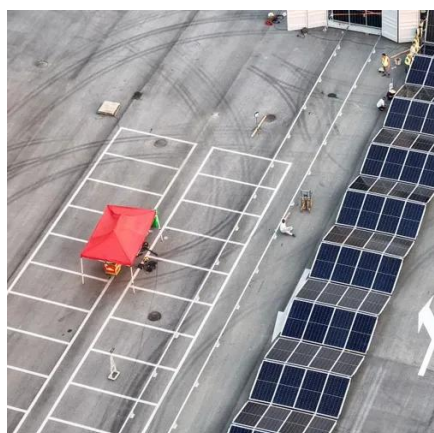


Explained

Parts of A Solar Photovoltaic Power Plant
How Does A PV Power Plant Work?
Types of Photovoltaic Plants
Impact and Affection on The Environment
There are several types of photovoltaic plants, which vary according to their size, configuration and application. Here are some of the most common types: 1. Large-Scale Photovoltaic Power Plants: These are large solar power generation facilities designed to produce a significant amount of electricity. They can occupy large areas, such as solar par See more on solar-energy.technologyU.S. Energy Information Administration (EIA)

Photovoltaics and electricity - U.S. Energy Information ...

Solar photovoltaic cells are grouped in panels, and panels can be grouped into arrays of different sizes to power water pumps, power individual homes, or provide utility-scale electricity generation.



Photovoltaic Power Station: The Future of Clean Energy

What Is a Photovoltaic Power Station? A photovoltaic power station is a large facility that uses solar photovoltaic technology to convert sunlight directly into electricity. Photovoltaic (PV) refers ...



Photovoltaic solar power plants

Photovoltaic solar power plants Energy can be harnessed directly from the sun, even in cloudy weather. Solar energy is used worldwide and is increasingly popular for generating electricity ...





Understanding PV Power Plant Fundamentals

Explore key insights into PV power plant operations, efficiency, and their role in revolutionizing the clean energy landscape.





Contact Us

For catalog requests, pricing, or partnerships, please visit:

<https://firmaskrzypek.pl>

Phone: +48 22 426 71 90

Email: info@firmaskrzypek.pl

Scan the QR code to access our WhatsApp.

