



Photovoltaic panels are laid on the north and south slopes





Overview

Panels typically need to face true south for those living in the northern hemisphere and true north for those in the southern hemisphere. This angle changes depending on the. Orientation Impact is Massive: The difference between optimal and poor solar panel placement can impact energy production by up to 30%, making proper positioning one of the most critical factors in maximizing your solar investment return. South-facing roofs get sunlight for the longest part of the day, maximizing. Usually, solar panels of a self-consumption system are located on the roof, although it is not the area closest to the storage system or energy meters. For security and architectural integration reasons, the roof of the buildings is usually determined as the location area for the solar panels. Arrays that are appropriately oriented can improve energy output by up to 30% or more ². However, factors such as roof slope and proximity to the equator may have some homeowners considering other directions (including north). In this guide, we'll break down.



Photovoltaic panels are laid on the north and south slopes



[Solar panel inclination angle, location and orientation](#)

Learn the best direction for solar panels to optimize energy efficiency and savings. Find expert advice on positioning your panels for maximum ...

[Which Is More Important: Solar Panel Orientation or Angle?](#)

True south and true north both face the Earth's axis and don't align with the Earth's magnetic poles. For homeowners in the Northern hemisphere, the best direction for solar panels to ...



[How Roof Pitch and Orientation Affect Your Solar Production \(And ...\)](#)

Ideally, solar panels should face south in the northern hemisphere (north in the southern hemisphere) to get the most sun exposure. South-facing roofs get sunlight for the longest part of the day, maximizing ...



[Maximize Efficiency: Best Direction for Solar Panels , Sunrun](#)

Learn the best direction for solar panels to optimize energy efficiency and savings. Find expert advice on positioning your panels for maximum performance.

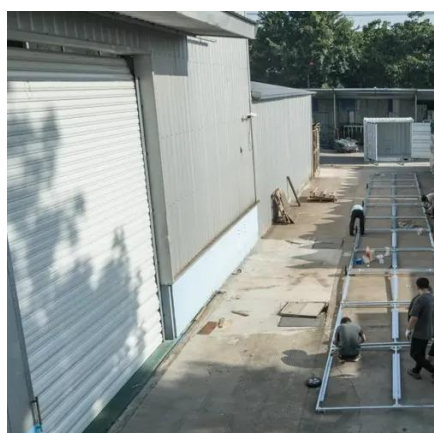


[How to lay out solar photovoltaic panels , NenPower](#)

Specifically, in the northern hemisphere, positioning panels to face true south promotes optimal exposure to sunlight. Conversely, in the southern hemisphere, panels should be directed ...

Solar Panel Angle: Definition, and How to Calculate

Panels typically need to face true south for those living in the northern hemisphere and true north for those in the southern hemisphere. For panels to generate maximum energy output, ...



Design Considerations , NAHB

To maximize solar production in the northern hemisphere, the optimal roof should face South. Depending on the lot, due South might not be possible. Southeast and Southwest orientations can ...

Orientation of solar panels



Sun rays fall on it at an angle, which is why some parts of the world enjoy more solar irradiance than others. While being almost 90° at the Equator, the pitch gets smaller toward the north ...



[Solar Panel Direction & Orientation: 2025 Complete Guide](#)

Orientation refers to the cardinal direction your solar panels face (north, south, east, or west), also known as the azimuth angle. Tilt angle describes the vertical angle of your panels relative ...

[Solar panel inclination angle, location and orientation](#)

To take maximum advantage of solar radiation, it is advisable to orient the solar panels towards the south if we are in the northern hemisphere and the north if we are in the southern ...



[Solar Panel Best Angle , Tilt & Orientation Guide 2025](#)

Find the best solar panel angle for your location. Learn tilt formulas, seasonal adjustments, and tips to maximize energy efficiency in 2025. When it comes to installing solar ...





Contact Us

For catalog requests, pricing, or partnerships, please visit:

<https://firmaskrzypek.pl>

Phone: +48 22 426 71 90

Email: info@firmaskrzypek.pl

Scan the QR code to access our WhatsApp.

