



Photovoltaic panel weighing





Overview

What is the average photovoltaic solar panel weight I should expect?

Generally, standard residential photovoltaic panels weigh between 40 and 50 pounds (about 18 to 22 kilograms). This weight makes them manageable, but still requires careful lifting during installation. Understanding the mass of these powerful energy generators. These panels cover an area of 17.62 square feet and weigh around 40 pounds, excluding the weight of frames and mounting equipment. However, solar systems with 8kW rated capacity and above add more than 1,000 lbs to your roof. For example, residential.



Photovoltaic panel weighing



Solar Panel Size And Weight: A Comprehensive Guide

Find the exact solar panel size & weight in our 2025 guide. Our complete chart compares models by ft/cm and lbs/kg to help you plan your ...

[How Much Do Solar Panels Weigh? 1.30 - 2,608.7 lbs Chart](#)

When figuring out how much weight do solar panels add to a roof, that would be quite useful data to have. All individual solar panels weigh less than 100 lbs. However, solar systems with 8kW rated capacity and above ...



Solar Panel Weight Guide

Learn the average weight stats for both home and business solar panels, as well as some FAQs about solar panels' weight.

[How Much Do Solar Panels Weigh? A Complete Guide ...](#)

In this article, you'll find all the information you need about the weights of different types of solar panels.



[Solar panel size and weight: everything you need to know](#)

Learn everything about solar system size, solar panel dimensions, and how much solar panels weigh in this complete guide for residential photovoltaic installations.

[How Much Does a Solar Panel Weight? Find Out Before You Buy](#)

Most standard residential solar panels weigh around 40 pounds. That's roughly the size of a big flat-screen TV--but heavier and less fun at parties. You're usually looking at 2.5 to 3 pounds per square foot. ...



[Solar Panel Size and Weight: How Big Are Solar Panels?](#)

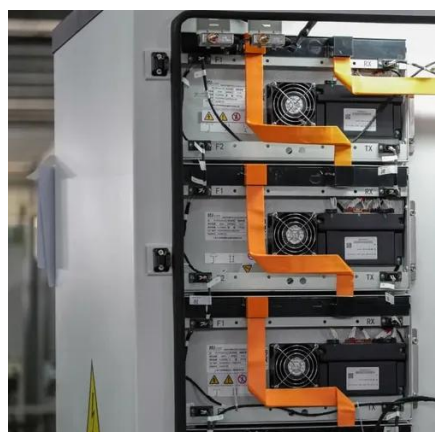
Solar panels usually weigh about 40 to 50 pounds. Commercial solar panels are generally larger than residential solar panels at 6.5 feet by 3 feet. Installing high-efficiency solar panels can reduce the ...

Solar Panel Size And Weight: A



Comprehensive Guide

When considering residential solar panels, typical configurations consist of 60 cells measuring approximately 3.25 feet by 5.5 feet. These panels cover an area of 17.62 square feet and weigh



Solar Panel Weight Guide - Solar Generation USA

How Much Does a Solar Panel Weigh? On average, a standard residential solar panel (around 60 cells) weighs between 18 to 23 kilograms (40 to 50 pounds). Larger commercial panels (typically 72 cells) can weigh up to ...

average photovoltaic solar panel weight guide

Generally, standard residential photovoltaic panels weigh between 40 and 50 pounds (about 18 to 22 kilograms). This weight makes them manageable, but still requires careful lifting during installation.



[The Ultimate Guide to Solar Panel Size, Weight & Wattage \(2025\)](#)

Find the exact solar panel size & weight in our 2025 guide. Our complete chart compares models by ft/cm and lbs/kg to help you plan your installation.



Contact Us

For catalog requests, pricing, or partnerships, please visit:

<https://firmaskrzypek.pl>

Phone: +48 22 426 71 90

Email: info@firmaskrzypek.pl

Scan the QR code to access our WhatsApp.

