



Photovoltaic panel technical parameters 515





Overview

With a power output range of 515 to 550 Watts peak (Wp), these solar panels are engineered to deliver exceptional efficiency and reliability. The Solar Panel 515 - 550 Wp is equipped with high-efficiency polycrystalline solar cells, delivering a substantial power output. Note: Your Enquiry will be sent directly to Premier Energies Limited. Most home solar panels today have a power output near 400 watts. EnergyPal is a. The article covers the key specifications of solar panels, including power output, efficiency, voltage, current, and temperature coefficient, as presented in solar panel datasheets, and explains how these factors influence their performance and suitability for various applications. Solar modules. In In this paper, we propose a method based on Internet of Objects technology to transmit and monitor in real-time the main parameters of a photovoltaic panel thanks to a low. Step by Step Procedure with Calculation & Diagrams.



Photovoltaic panel technical parameters 515

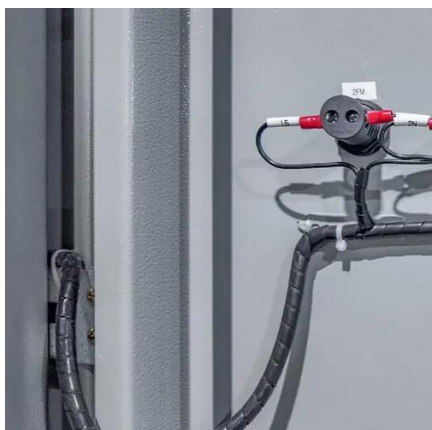


Photovoltaic panel technical specifications

If you need to compare the technical characteristics of multiple products or need clear instructions on what your panels are capable of, the spec sheet is the place to go.

Topsun 515W Solar Panel Specifications

Learn about the Topsun 515W solar panel. Explore solar panel efficiency, warranties and more.



Premier Energies , P-Type 144 cell 515

Premier Energies Limited Solar Panel Series P-Type 144 cell 515 - 555 W. Detailed profile including pictures, certification details and manufacturer PDF

Photovoltaic panel technical parameters 515

These parameters are often listed on the rating labels for commercial panels and give a sense for the approximate voltage and current levels to be expected from a PV cell or panel.

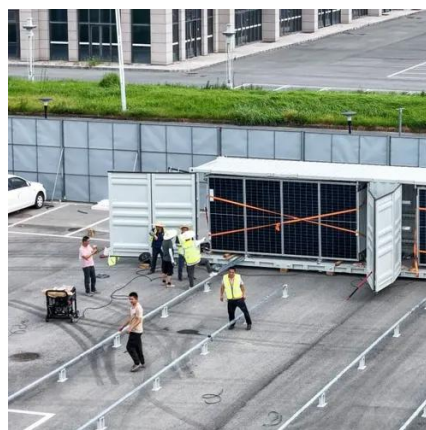


[Technical guide for interpreting and installing solar panels](#)

This detailed guide will help you understand each of the technical aspects of solar panel specifications so you can correctly select and install the modules in your photovoltaic system.

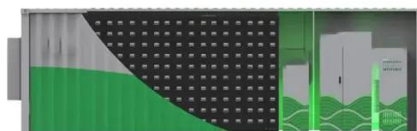
[PV Panel Specifications: Understanding Solar Panel Technical ...](#)

You need to know what these numbers mean before picking a solar panel. The right photovoltaic panel specifications help you match your energy needs and roof space.



[Solar Photovoltaic: SPECIFICATION, CHECKLIST AND GUIDE](#)

Although system arrays (panels or collectors) can be racked up to meet the inclination/tilt needed for optimal system output, this specification is based on and limited to the known building attributes (roof ...



SOLAR PANNEL 515 - 550 Wp



With a power output range of 515 to 550 Watts peak (Wp), these solar panels are engineered to deliver exceptional efficiency and reliability. The Solar Panel 515 - 550 Wp is equipped with high-efficiency ...



[Analysis of specifications of solar photovoltaic panels](#)

This paper analyses photovoltaic panels (PVP) in order to identify the best values of their various nominal (rated) parameters in terms of lifetime and efficiency.

Solar Panel Datasheet Specifications Explained

The article covers the key specifications of solar panels, including power output, efficiency, voltage, current, and temperature coefficient, as presented in solar panel datasheets, and explains how these ...





Contact Us

For catalog requests, pricing, or partnerships, please visit:

<https://firmaskrzypek.pl>

Phone: +48 22 426 71 90

Email: info@firmaskrzypek.pl

Scan the QR code to access our WhatsApp.

