



Photovoltaic panel sunshade installation





Overview

Learn to install solar shades with our detailed guide. Solar panel shading analysis is a critical component of solar energy systems that ensures optimal performance and efficiency. This comprehensive guide delves into various aspects of shading analysis, including its importance, types of shading, methodologies, tools for assessment, and strategies for. This will allow for completion of the installation process, where you will be instructed to adjust the Down Position Limit to a maximum 84". Note: Prior to installing your Solar Powered Motorized EasyShade, please review Figure 1 (Solar Powered Motorized EasyShade Schematic View) then inspect to. How to calculate the suggested minimum distance between photovoltaic panels?

Methodology Of The Calculator Of The Minimum Distance Between Solar Panels. This EasyShade saves energy by stopping the glare and heat before it can enter your home, yet still lets you enjoy your view, all a you require assistance. We also invite you to visit the Owner's Corner at <https://www>. It is an environmentally friendly alternative. Find your category below or go to your product's specific page for installation instructions and a video. Still have questions or concerns?

We've got you.

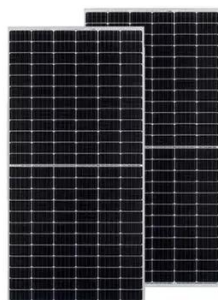


Photovoltaic panel sunshade installation



SunSetter EASYSHADE Owner's Manual

Factory Limit Settings The Up and Down stop limits on the EasyShade motor were set at the factory to stop 36" from the Housing. This will allow for ...



Building an Effective Solar Panel Shade Structure

Boost solar panel efficiency with our guide to building effective shade structures. Get tips on installation, materials, and maintenance.

Shade And Solar Panels: What You Need to Know

Do Solar Panels Work in the Shade? Solar panels can still function in shaded conditions, though their efficiency is reduced compared to full sunlight exposure. Modern solar panel technology, including ...

50KW modular power converter



Solar Panel Shading Analysis: A Detailed Guide

Solar panel shading analysis refers to the evaluation of shadows on solar panels to determine how shading affects energy production. This process involves identifying potential sources ...



TAX FREE

1-3MWh
BESS



Solar-Powered EasyShade®

3. Use the 4mm Allen wrench (supplied) to secure the solar panel to the EasyShade housing by inserting and tightening the provided Allen set screw under the bottom edge of the solar ...

Solar Panel Shade Structure

I'll show you how to construct your solar panel shade structure in this step-by-step tutorial so you can get the most out of solar energy. You may want to lower your carbon footprint.



[SunSetter EASYSHADE Owner's Manual & Installation Instructions](#)

Factory Limit Settings The Up and Down stop limits on the EasyShade motor were set at the factory to stop 36" from the Housing. This will allow for completion of the installation process, where you will be ...

[Maximizing Solar Potential: Essential](#)



[Shading Analysis Tips](#)

Solar panel efficiency hinges on proper shading analysis, but what crucial factors are you overlooking? Discover essential tips to maximize your system's potential.

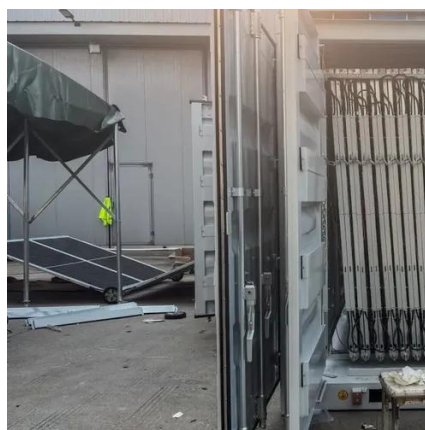


Shade Calculator

Knowing the minimum angle of incidence of sunlight during the year, it is possible to determine the distance between successive rows of photovoltaic panels. The figure below shows the schematic ...

[Install Solar Shades - Blindster's Step-by-Step Guide](#)

Learn to install solar shades with our detailed guide. Perfect for blocking UV rays with style.



Louvers & Brise Soleils

A well-designed solar shading system incorporates semi-transparent PV glass for effective shading and opaque glass to maximize energy production and maintain visual consistency. Explore how our solar ...



Contact Us

For catalog requests, pricing, or partnerships, please visit:

<https://firmaskrzypek.pl>

Phone: +48 22 426 71 90

Email: info@firmaskrzypek.pl

Scan the QR code to access our WhatsApp.

