



# Photovoltaic panel 575w component size





## Overview

---

The solar photovoltaic panels 575w utilizes 144 (6x12x2) multi-busbar (MBB) N-TOPCon cells made from 182mm wafers. Bifacial. Based on Multi-busbar technology for better light trapping effect, lower series resistance and improved current collection. Mechanical performance up to 5400 Pa positive load and 2400 Pa negative load. Lower LCOE (Levelized Cost Of Energy), reduced BOS (Balance of System) cost, shorter payback. \*Bifacial Gain: The additional gain from the back side compared to the power of the front side at the standard test condition. It depends on the mounting (structure, height, tilt angle, etc. 0 technology has better reliability. Note: Your Enquiry will be sent directly to Nantong Gamko New Energy Co. Detailed profile including pictures, certification details and manufacturer PDF . The Jinko 575W Solar Panel is a high-performance and durable solution for both residential and commercial solar power systems.



## Photovoltaic panel 575w component size

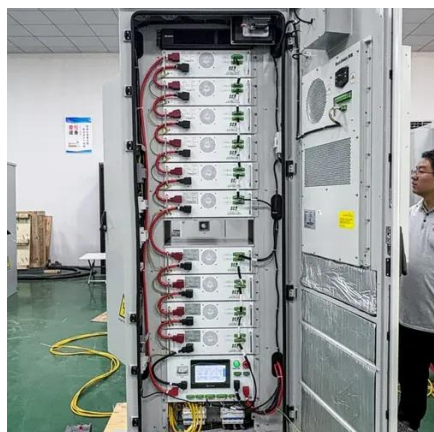


### [N-type TOPCon Solar Panel 575W 570W 565W 560W 555W PV Module](#)

The SunEvo N-type Bifacial Half-cell Module can reach power output up to 575W. N-type material has zero LID/LeTID risk, and make modules to be higher reliable, higher bifacility, higher efficiency, lower ...

### [Luxor Solar , LX-555-575W M144 / 182+ N-TYPE HC, BW , Solar Panel](#)

Luxor Solar GmbH Solar Panel Series LX-555-575W M144 / 182+ N-TYPE HC, BW. Detailed profile including pictures, certification details and manufacturer PDF.



### [How to Choose the Best 575W Solar Panel: A Complete Buying Guide](#)

These panels typically fall within the range of 2.2 to 2.4 square meters in size and are commonly used in both residential rooftop systems and utility-scale solar farms due to their optimal ...

## 575W photovoltaic panel specifications

Explore the cutting-edge Jinko Neo Monofacial JKM575N-72HL4-V solar panel, delivering an impressive 575Wp output with advanced monocrystalline technology. With its high-efficiency design, this solar ...



## **JKM565-585N-72HL4-(V)-F3-EN.ai**

Specifications included in this datasheet are subject to change without notice.



## **AE\_CMD-144BDS\_575W-595W\_Ver24**

The specifications and characteristics contained in this datasheet may deviate slightly from our actual products due to the product developments and uncertainty of measurement devices. The ...



## **Solar Panel NCTS-SP575WM data sheet**

FZS1BL01 , Jebel Ali Freezone , Dubai , UAE , P.O. Box 17000 , e-mail: info@ncts



## **JINKO 575W**



Monocrystalline cell technology ensures high power output from a smaller surface area. Frame: Anodized aluminum for enhanced strength and durability. Glass: Anti-reflection coating, tempered ...



### [GT575W-144M bifacial topcon solar photovoltaic panels 575w](#)

Equipped with 144 pieces of 182mm MBB (Multi-Busbar) N-TOPCon solar cells, this panel ensures superior performance. The N-TOPCon technology minimizes energy loss and maximizes light ...

### **Vertex 575W TSM-DEG19RC.20**

Based on Multi-busbar technology for better light trapping effect, lower series resistance and improved current collection. Mechanical performance up to 5400 Pa positive load and 2400 Pa negative load. ...





## Contact Us

---

For catalog requests, pricing, or partnerships, please visit:

<https://firmaskrzypek.pl>

Phone: +48 22 426 71 90

Email: [info@firmaskrzypek.pl](mailto:info@firmaskrzypek.pl)

Scan the QR code to access our WhatsApp.

