



New Zealand bifacial solar panels





Overview

It's a portable solar panel designed from the ground up to be compact. 10% smaller than comparable 220W panels, it saves space with thinner tempered glass, and less surface area required for the same input. It comes with its own carry case so you can. The Trina Solar Vertex S+ 440W (TSM-440NEG9RC. 27) is a next-generation N-Type i-TOPCon bifacial dual-glass solar module, delivering up to 22.3% efficiency and enhanced rear-side energy gain. Designed for residential and commercial rooftops, its transparent dual-glass construction improves. The TW Solar TWMNH-48HC-440 is a high-performance 440W N-Type bifacial solar panel designed for maximum efficiency and durability. New extension cables make it easy to connect multiple panels in your backyard. Long-Lasting Solar Solution for Your Home With a 30-year lifespan, this durable, low-maintenance.



New Zealand bifacial solar panels



[Trina Solar Vertex N N-type i-TOPCon Bifacial Dual Glass 705W Solar Panel](#)

With an impressive power output of up to 705 watts and module efficiency of around 22.5%, it features advanced 210 mm solar cells, dual-glass construction for enhanced durability, and a low temperature ...

580W Bifacial Solar Panel

Elevate your solar energy system with our high-performance bifacial solar panel, engineered to deliver exceptional efficiency and durability under various conditions.



[ECOFLOW 125W BI FACIAL MODULAR SOLAR PANEL X 2 PRE ...](#)

Designed for broad compatibility, this solar panel works seamlessly with a range of EcoFlow portable power stations. You can scale up power by adding more panels and even mix older and newer panel ...

Jinko 590W Tiger Neo N-type Bifacial

High-efficiency bifacial solar panel for commercial and utility-scale projects in New Zealand. The Jinko 590W Tiger Neo N-Type Bifacial panel is engineered for performance, longevity, and return on ...



[Vertex S+ 440W Bi Facial Dual Glass N-type Solar Module, Black ...](#)

The Trina Solar Vertex S+ 440W (TSM-440NEG9RC.27) is a next-generation N-Type i-TOPCon bifacial dual-glass solar module, delivering up to 22.3% efficiency and enhanced rear-side energy gain.



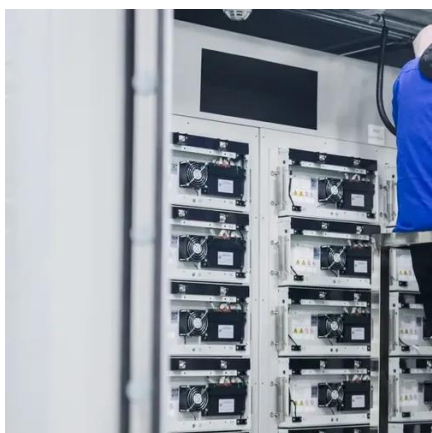
Ecoflow Bifacial Portable Solar Panel 220W

It's a portable solar panel designed from the ground up to be compact. 10% smaller than comparable 220W panels, it saves space with thinner tempered glass, and less surface area required for the ...



Bifacial Solar Panels

A colleague here in New Zealand recently introduced me to a new solar innovation: bifacial solar panels. I did a little research, and it turns out these bifacial panels are pretty neat.



[EcoFlow 125W Bifacial Modular Solar](#)



Panel x 2 - Portable Power New Zealand

The EcoFlow 125W bifacial modular solar panel offers 25% efficiency, plug-and-play expansion, and reliable performance in various weather conditions, making it ideal for long-term home and outdoor use.



EcoFlow 125W Bifacial Modular Solar Panel - EcoFlow New Zealand

Traditional solar arrays require complex wiring when connecting multiple panels in series. With EcoFlow's 125W bifacial panel, you can expand power effortlessly through parallel or simple series ...

TW Solar 440W Full Black Bifacial N-Type Solar Panel

Upgrade to TW Solar 440W Full Black N-Type bifacial panels. Dual-glass design for durability, high efficiency, and premium solar performance in New Zealand.





Contact Us

For catalog requests, pricing, or partnerships, please visit:

<https://firmaskrzypek.pl>

Phone: +48 22 426 71 90

Email: info@firmaskrzypek.pl

Scan the QR code to access our WhatsApp.

