



# Long-lasting photovoltaic cabinet for base stations





## Overview

---

Integrates solar input, battery storage, and AC output in a compact single cabinet. Offers continuous power supply to communication base stations—even during outages. Highjoule's Indoor Photovoltaic Energy Cabinet delivers seamless power for telecom infrastructure: ✓ Integrated PV + Storage - Harness solar energy and store it intelligently ✓ Ultra-compact indoor design - Fits seamlessly into existing base stations ✓ Smart energy management - Prioritizes clean. The EK indoor photovoltaic energy storage cabinet is a photovoltaic system integration device installed in indoor environments such as communication base stations. Remote diagnosis, performance tracking, and fault alerts through intelligent BMS. Versatile capacity models from 10kWh to 40kWh to. Stationary power storage systems have experienced strong growth in recent years. In addition to our Energy Container Solutions, this ESS cabinet offers a compact system in a robust outdoor housing as the ideal energy storage solution for a wide range of applications. It integrates the photovoltaic, wind energy, rectifier modules, and lithium batteries for a stable power supply, backup power, and.



## Long-lasting photovoltaic cabinet for base stations

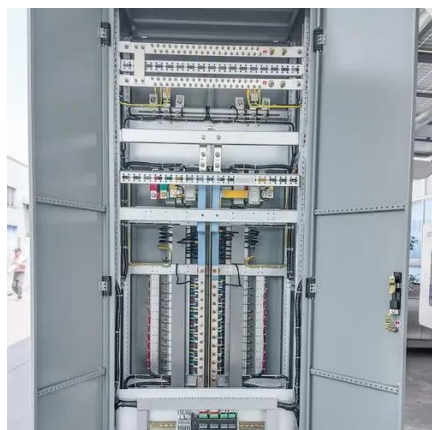


### Indoor Photovoltaic Energy Cabinet

The Huijue Indoor Photovoltaic Energy Cabinet is a complete high-performance indoor energy storage solution for telecommunication, business, and industry.

### Energy Storage for Communication Base

Our energy storage solution is flexible in design and can be seamlessly integrated with various existing base station power systems. The modular design can better adapt to different types of base stations, ...



### Outdoor Photovoltaic Energy Cabinet, Base Station Energy Storage

An Outdoor Photovoltaic Energy Cabinet is a fully integrated, weatherproof power solution combining solar generation, lithium battery storage, inverter, and EMS in a single cabinet. It delivers clean, ...

### Pole-Type Base Station Cabinet , Efficient Energy Solutions for

Discover the Pole-Type Base Station Cabinet with integrated solar, wind energy, and lithium batteries. Designed for seamless installation and remote monitoring, this energy-efficient cabinet ensures ...



### [Indoor Photovoltaic Energy Cabinet, Base Station Energy Storage](#)

An indoor photovoltaic energy cabinet is a compact, integrated energy storage system designed to be deployed inside telecom facilities. It combines lithium battery storage, PV input, and intelligent ...



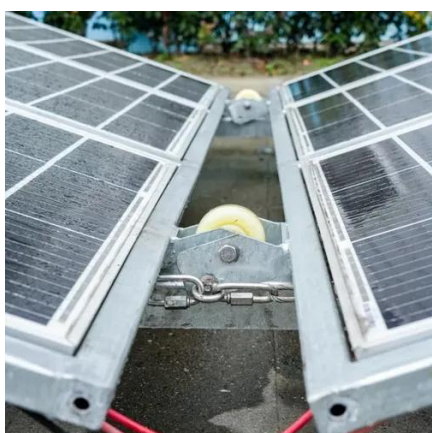
### **Base Station Energy Cabinet**

The Base Station Energy Cabinet is a fully enclosed, weather-resistant telecom energy cabinet designed to provide reliable power distribution and battery backup for outdoor communication networks.



### [10KWh/ 20KWh/ 30KWh/40KWh Indoor Photovoltaic Energy Cabinet](#)

It adopts a modular design, compatible with multi-source input and output of mains, photovoltaic, and energy storage, and can be flexibly configured according to scene requirements to provide ...



### [15kW / 35kWh Hybrid Solar System](#)



## Integrated Energy Storage Cabinet

Certified to international standards, including IEC 62619 and IEC 62040, it delivers over 6,000 cycles of dependable performance, ensuring long-term energy storage solutions for residential and ...



## **ESS Cabinet**

Stationary power storage systems have experienced strong growth in recent years. In addition to our Energy Container Solutions, this ESS cabinet offers a compact system in a robust outdoor housing ...

## **Indoor Photovoltaic Telecom Energy Cabinet**

LZY Energy's Indoor Photovoltaic Energy Cabinets are solar-powered integrated equipment especially designed to meet the requirements of communication base station rooms.





## Contact Us

---

For catalog requests, pricing, or partnerships, please visit:

<https://firmaskrzypek.pl>

Phone: +48 22 426 71 90

Email: [info@firmaskrzypek.pl](mailto:info@firmaskrzypek.pl)

Scan the QR code to access our WhatsApp.

