



Lithium battery pack parallel and series connection





Overview

Batteries achieve the desired operating voltage by connecting several cells in series; each cell adds its voltage potential to derive at the total terminal voltage. Connecting multiple lithium batteries into a string of batteries allows us to build a battery bank with the potential to. Connecting lithium-ion batteries in parallel or in series is not as straightforward as a simple series-parallel connection of circuits. We'll use this to relate to the physical connections between the batteries that you would use to construct a battery pack. Whether you're designing an electric vehicle powertrain or optimizing a solar microgrid, our 15+ years of expertise in custom battery pack assembly will equip you to: Every custom.



Lithium battery pack parallel and series connection



How To Connect Batteries In Series and Parallel

If you have two sets of batteries connected in series, you can wire both sets into a parallel connection to make a series-parallel battery bank. In the images below we will walk you through the ...

[Lithium Series, Parallel and Series and Parallel Connections](#)

Connecting multiple lithium batteries into a string of batteries allows us to build a battery bank with the potential to operate at an increased voltage, or with increased capacity and runtime, or both.



[Battery University , BU-302: Series and Parallel Battery...](#)

Some packs may consist of a combination of series and parallel connections. Laptop batteries commonly have four 3.6V Li-ion cells in series to achieve a nominal voltage 14.4V and two ...

[Helpful Guide to Lithium Batteries in Parallel and Series](#)

Understand how to connect lithium batteries in parallel and series. Get practical tips and avoid common pitfalls. Start optimizing your battery setup today!

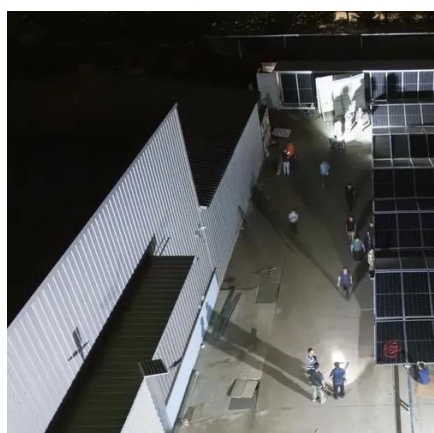
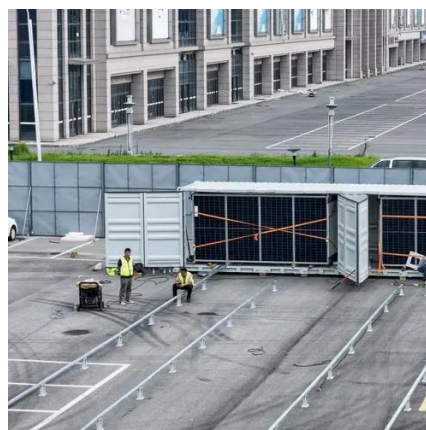


Everything About Lithium Battery Series & Parallel

Learn how to safely connect lithium batteries in series and parallel. Avoid risks, extend battery life and build reliable power systems with our expert guide.

Series-Parallel Battery Configurations Guide 2025

For projects requiring rapid deployment, our pre-configured 12V lithium battery packs support plug-and-play parallel expansion. Hybrid configurations combine the voltage-boosting ...



[Batteries and Chargers Connected in Series and Parallel](#)

There are many ways to connect a group of batteries in both series and parallel at the same time. This is common practice in many battery power appliances, particularly in electric vehicles and large UPS ...

[Series vs. Parallel: How to Correctly](#)



[Connect Your ...](#)

Unlock the ultimate guide to using LiFePO4 lithium batteries in series and parallel. Learn configurations, benefits, and tips for optimal performance!



Batteries in Series vs Parallel: Which is Better?

Connecting in series increases voltage, but wiring in parallel increases your battery bank capacity. That is, amp-hour capacity. The total voltage does not change. That means that two 12V 30Ah batteries in ...

[Battery Packs In Series Or Parallel: Key Differences And Wiring](#)

Series connections require connecting the positive terminal of one battery to the negative terminal of the next, while parallel connections connect all positive terminals together and all ...





Contact Us

For catalog requests, pricing, or partnerships, please visit:

<https://firmaskrzypek.pl>

Phone: +48 22 426 71 90

Email: info@firmaskrzypek.pl

Scan the QR code to access our WhatsApp.

