



Lighting angle range of photovoltaic panels





Overview

As a general rule of thumb, the ideal solar panel angle will match your home's latitude, usually around 30°- 45° and facing south in the US. A correctly tilted system can improve efficiency by 5-10% annually, reducing payback time and boosting long-term savings. In this guide, we'll break down the basic idea of controlling solar panel efficiency: panels generate the maximum power when sunlight strikes their surface perpendicularly, therefore forming a direct 90-degree angle. The photovoltaic cells absorb the most solar energy available at that instant when the sun's rays strike. Positioning solar panels at the best angle is essential for maximizing the efficiency of your solar energy system. However, this optimal tilt depends on.



Lighting angle range of photovoltaic panels

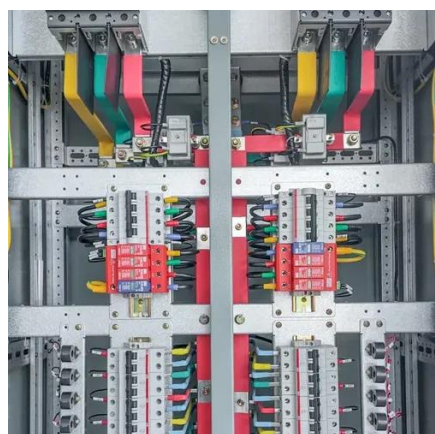
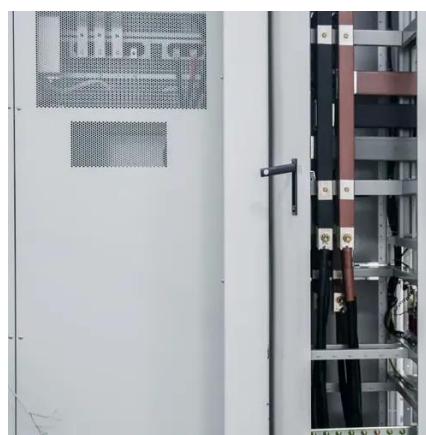


[What's the Best Angle for Solar Panels to Get Maximum Output?](#)

Learn what goes into determining the best angle for solar panels to optimize energy output and how you can ensure your solar system is designed to maximize efficiency of your solar ...

[Solar Lighting: the Crucial Importance of Panel Tilt and ...](#)

Discover everything you need to know about the tilt and the orientation of solar panels when setting up self-sustaining street lights.



Solar Angle Secret: Are Your Panels Tilted Right?

The tilt of your solar panels directly affects the amount of sunlight impacting their surface, thereby determining the generated volume of electricity. Your system's production and your return on ...

[What is the Best Angle for Solar Panels? Maximizing the Efficiency](#)

For most locations, solar panels installed at a fixed tilt equal to the site latitude +/- 15 degrees will capture reasonable sunlight year-round. However, calculating precise annual and seasonal tilt angles ...



[Solar Angle Calculator , Solar Panel Angle Calculator](#)

To get the best out of your photovoltaic panels, you need to angle them towards the sun. The optimum angle varies throughout the year, depending on the seasons and your location and this calculator ...

Solar Panel Angle Calculator

Our solar panel angle calculator takes the guesswork out of panel positioning, suggesting panel tilt angles based on your location's latitude and your willingness to reposition based on the sun's ...



[Photovoltaic Efficiency: Solar Angles & Tracking Systems](#)

Below is an overview of the angles involved in calculating the amount of solar radiation that a PV panel receives at any given time (also see Figure 3). The angle at which the sun hits a PV panel is the ...

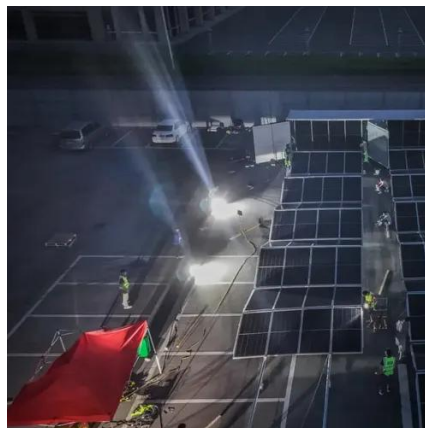


Solar Panel Angle: Definition, and



How to Calculate

A solar panel angle calculator is a tool used to determine the ideal tilt angle for solar panels based on a range of factors such as location, time of year, and required energy output.



[Solar Panel Best Angle , Tilt & Orientation Guide 2025](#)

In this guide, we'll break down the science behind the best solar panel angle, explain how to calculate it based on latitude, show seasonal adjustments, and share competitor-winning insights ...

[Best Angle for Solar Panels: How to Maximize Sunlight](#)

Wondering what is the best angle for solar panels? Learn how adjusting the best angle for solar panels improves energy production year-round.





Contact Us

For catalog requests, pricing, or partnerships, please visit:

<https://firmaskrzypek.pl>

Phone: +48 22 426 71 90

Email: info@firmaskrzypek.pl

Scan the QR code to access our WhatsApp.

