



Lighthouse green fuels carbon capture

114KWh ESS



PICC
SALTYDZIANKI

RoHS



MSDS

UN38.3

UK
CA



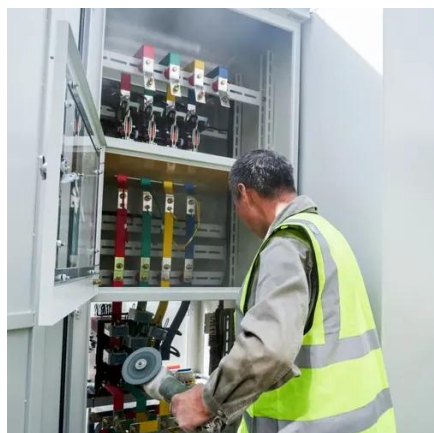


Overview

Using proven gasification and Fischer-Tropsch technology, LGF will turn 1.5m tonnes of biogenic residues into jet fuel each year: a Carbon Capture and Storage (CCS) ready, drop-in solution for one of the world's toughest decarbonisation challenges. Lighthouse Green Fuels will convert 1. From feedstock to. Our Lighthouse Green Fuels project in Teesside, UK, is a green fuel refinery which will convert sustainably-sourced biomass – including forest, sawmill and agricultural residues in line with the UK SAF Mandate – into SAF. A brownfield site will be transformed into the new LGF renewable fuel. Teesside's ambitions to lead the UK's low-carbon revolution have been handed a sizeable boost, with Saudi Arabian investor Alfanar confirming plans for a £2bn sustainable aviation fuel (SAF) plant at the North Tees industrial cluster.



Lighthouse green fuels carbon capture



[Lighthouse Green Fuels Launches Consultation On , decarbonfuse](#)

It is also located even closer to Teesside's carbon capture and storage infrastructure, providing the opportunity for seamless integration into the network in future. This could mean CO2 savings from the ...

[Lighthouse Green Fuels to showcase CCS and SAF at CCSA2025](#)

Our Teesside second-gen SAF facility is designed to capture CO2 as a high-purity stream for permanent storage, enabling the production of carbon-negative sustainable aviation fuel.



IP65/IP55 OUTDOOR CABINET

IP54/55

OUTDOOR ENERGY STORAGE CABINET

OUTDOOR BATTERY CABINET

[Teesside's take-off: £2bn green jet fuel plant lands major commitment](#)

Lighthouse Green Fuels will connect to the Northern Endurance Partnership's CO2 transport and storage network being developed off the Teesside coast, enabling the capture and permanent sequestration ...

Lighthouse Green Fuels Project

Capturing and permanently storing CO2 reduces our fuels' carbon intensity (C.I.); hence, we will capture as much CO2 as possible. The SAF generated by the LGF process achieves greenhouse gas (GHG) emissions ...

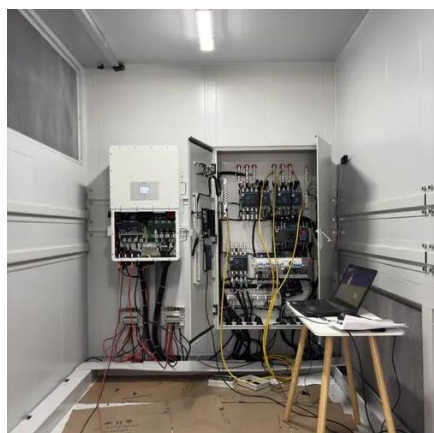


[£2billion aviation plant to create thousands of jobs secures investment](#)

More than 750,000 tonnes of carbon dioxide will be avoided when the plant is coupled with the carbon capture technology. Lighthouse Green Fuels is part of a wider movement establishing Teesside as ...

[Lighthouse Green Fuels confirms move to new site in Teesside for its £](#)

It is also even closer to carbon capture and storage infrastructure, providing the opportunity for seamless integration into the network when online. This would enable SAF to be produced with a 200% ...



Our Project , Lighthouse Green Fuels Teesside SAF

LGF's SAF production is carbon capture and storage (CCS) enabled. CO2 removal is built into the SAF production process, making truly carbon-negative SAF possible.

Lighthouse Green Fuels



Discover the Lighthouse Green Fuels project by Alfanar Energy, a carbon dioxide removal (CDR) initiative that actively extracts CO2 from the atmosphere and contributes to durable climate solutions.

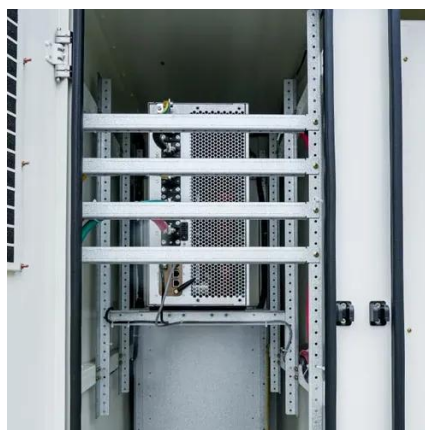


[Alfanar Confirms Larger Site for Lighthouse Green Fuels SAF Project](#)

It offers closer access to critical infrastructure, including rail and shipping links, as well as carbon capture and storage infrastructure. The site would be capable of enabling the entire conversion process, from ...

Lighthouse Green Fuels , Sustainable Aviation Fuel

Using proven gasification and Fischer-Tropsch technology, LGF will turn 1.5m tonnes of biogenic residues into jet fuel each year: a Carbon Capture and Storage (CCS) ready, drop-in solution for one of the world's ...





Contact Us

For catalog requests, pricing, or partnerships, please visit:

<https://firmaskrypek.pl>

Phone: +48 22 426 71 90

Email: info@firmaskrypek.pl

Scan the QR code to access our WhatsApp.

