



JA Solar 620 photovoltaic panel size





Overview

Measuring 2382 × 1134 × 30 mm and weighing ~33.1 kg, it offers robust mechanical ratings (snow 5,400 Pa / wind 2,400 Pa), typical 1500 V system voltage and commercial warranties (≈ 12 years product warranty and 30 years performance to ~87%), making it ideal for utility and large. part of the offer. They only serve for comparison among dif changes and tests. JA Solar reserves the right of f . 620 Photovoltaic panel size specifications 620 Photovoltaic panel size specifications As a leading PV project developer and manufacturer of solar modules with over 40 GW deployed around the world since 2001. Minimizes micro-crack impacts HiKu. SIL-620/630/640 XL BIFACIAL. A \$150 Panel Handling Fee applies to orders of fewer than 31 panels to cover extra handling. The JA Solar 620W Bifacial Solar Panel is an advanced solution for maximizing your solar generation capacity, perfect for both residential and commercial applications. JA Solar engineers made the Premium series durable and efficient while minimizing the amount of useful space required for their operation.



JA Solar 620 photovoltaic panel size

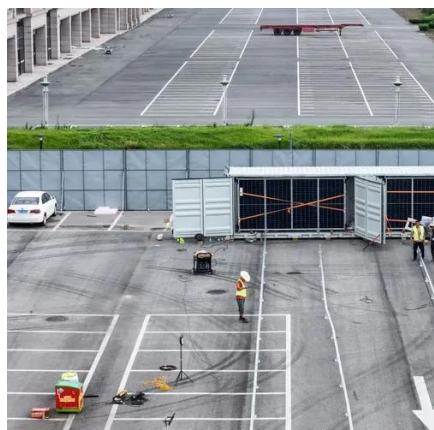


JA Solar JAM66D45-620/LB 620 Watt

Measuring 2382 × 1134 × 30 mm and weighing ~33.1 kg, it offers robust mechanical ratings (snow 5,400 Pa / wind 2,400 Pa), typical 1500 V system voltage and commercial warranties (? 12 years product ...

[JA Solar 620W Solar Module Pallet , Efficient PV Solar Modules](#)

JA Solar 620W JAM66D45 Solar Module Pallet delivers high-performance PV solar modules designed for large-scale residential, commercial, and utility projects. Built for efficiency and durability, these JA ...

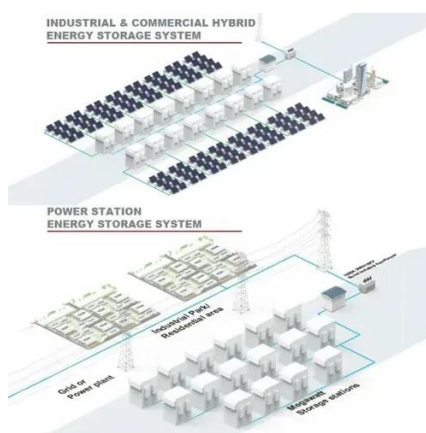


[Solar Panel N Type JA 620W Bifacial Solar Panel - Solux, LLC](#)

Produces 620W per square feet to optimize rooftops with space constraints. Independently generates renewable energy for electric bill savings. Get a powerful JA Solar 620W bifacial panel! Features ...

[JA Solar 620W Solar Panel 132 Cell Bifacial JA-JAM66-D45-620LB](#)

JA Solar JA-JAM66-D45-620LB is a PV module fit for both residential and commercial applications. JA Solar engineers made the Premium series durable and efficient while minimizing the amount of ...



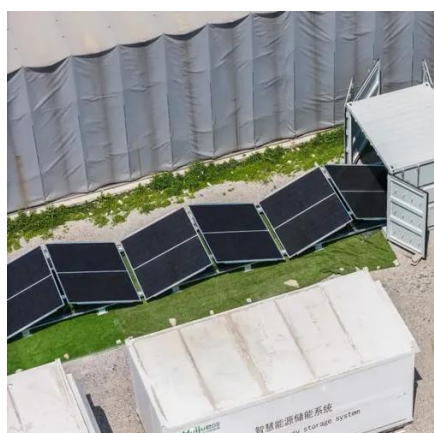
620 Photovoltaic panel size specifications

The panel is made with 182mm wafers, half-cut cells, and has a power output ranging from 590 to 620 W. It measures 2465& #215;1134& #215;30mm and has a weight of 34.8 kg. JA Solar reserves the ...



JA Solar

The JA Solar 620W Bifacial Solar Panel is an advanced solution for maximizing your solar generation capacity, perfect for both residential and commercial applications.



Ja Solar 620watts [Grade] A

The JA Solar 620W Bifacial Solar Panel harnesses dual-sided power generation for optimized energy capture. Ideal for residential and commercial installations, it features advanced PERC technology ...

JAM66D45-620/LB 620W Solar Panel



Information

See the table below for available information we have about Shanghai JA Solar Technology Co Ltd JAM66D45-620/LB solar panels. We do our best to provide information such as the JAM66D45 ...

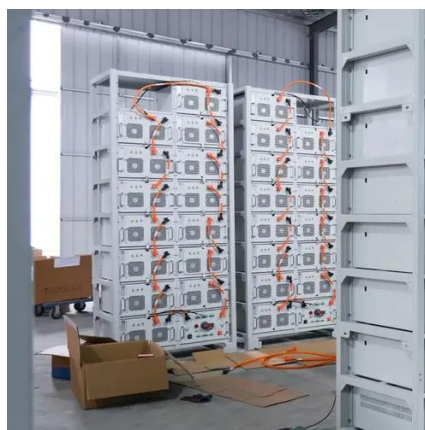


JAM66D45 LB 620W EN

ELECTRICAL CHARACTERISTICS WITH 10% SOLAR IRRADIATION RATIO * For Nextracker installations, maximum static load please take compatibility approve letter between JA Solar and ...

JA Solar Panel JAM66D45 605Wp - 620Wp

The JA Solar 605W-620W solar panel stands out for its advanced dual-glass bifacial technology and N-type half-cut cells, enabling energy capture from both sides to maximize power generation.





Contact Us

For catalog requests, pricing, or partnerships, please visit:

<https://firmaskrzypek.pl>

Phone: +48 22 426 71 90

Email: info@firmaskrzypek.pl

Scan the QR code to access our WhatsApp.

