



Is there electricity in the negative pole of the solar panel





Overview

Some solar panels are energy negative, meaning they take in more electrical power than they generate. This is good because it allows you to store excess energy from your system for later use or sale back onto the grid – this makes switching over to renewable sources of. If your solar panel does not have clearly labeled terminals, you can often identify the polarity by inspecting the junction box, which houses the wiring connections. Inside, you will usually find a bypass diode. This component is for maintaining energy flow when certain solar cells are shaded or. To accurately interpret the positive and negative poles of solar panels, a systematic approach is essential. You must set the volt meter to read DC Volts. Repeat for other PV modules you want to add to the series. Do solar panels have polarity?

Yes, solar.



Is there electricity in the negative pole of the solar panel



[Do Photovoltaic Panels Have Positive and Negative Wires? Let's ...](#)

You're not alone. The question "Are there no positive and negative wires on the photovoltaic panel?" has tripped up many green-energy enthusiasts. Let's flip the switch on confusion and shed some light on ...

[Identifying Positive and Negative Terminals on a Solar Panel](#)

In this article, we'll explore how to identify the positive and negative terminals of a solar panel, check solar panel polarity, and effectively connect a solar panel to a battery.



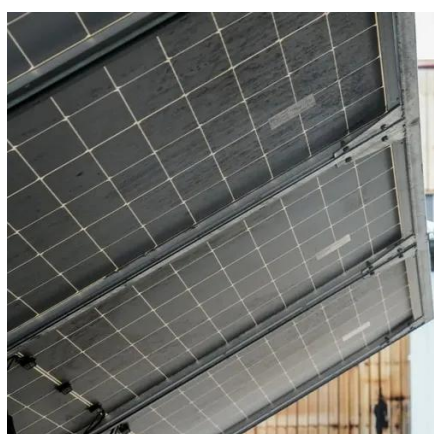
[How to read the positive and negative poles of solar panels in English](#)

Every solar panel comprises two terminals, the positive (+) terminal and the negative (-) terminal, both of which are crucial for completing the electrical circuit.

Do solar panels have positive and negative poles

The article explains how to determine the positive and negative terminals of a solar panel, crucial for proper installation to avoid energy wastage. Methods include examining the diode and using a

...



[How To Properly Determine The Negative And Positive Terminals Of ...](#)

In order to determine the positive and negative of your solar panel is to examine the diode. You're going to need to open your junction box in order to find the diode located inside. If you ...

[Positive and negative polarity of solar photovoltaic panels](#)

Key Takeaways. Some of the solar energy pros are: renewable energy, reduced electric bill, energy independence, increased home resale value, long term savings, low maintenance.



Commercial and Industrial ESS

Air Cooling / Liquid Cooling

- Budget Friendly Solution
- Renewable Energy Integration
- Modular Design for Flexible Expansion



[How to identify the positive and negative poles of solar panels](#)

In a typical solar panel configuration, the positive terminal is usually marked with a red wire or a "+" symbol, while the negative terminal is denoted by a black wire or a "-" symbol.

Solar Panel Positive and Negative



(Diode + Voltmeter)

In this article, you will learn how to determine the positive and negative terminals of a solar panel. We will also show you how to check solar panel polarity, and how to connect a solar panel to a battery.

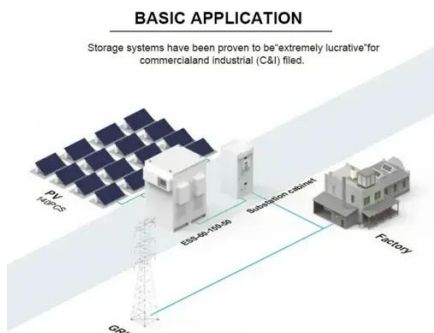


How to identify positive and negative solar panel polarity

Look for "+" and "-" symbols stamped into the panel frame, embossed on wiring insulation, or printed on adhesive labels under the glass surface. For newer panels, red sheathing typically indicates positive ...

How to distinguish positive and negative poles in photovoltaic panels

Simply attach the amp meter to the positive and negative poles of your solar panel. Make sure your panel has full sunlight before testing and that you use an amp meter with enough range so that you ...



Solar Panel Positive and Negative (Diode + Voltmeter)

Short on time? Here's The Article Summary
How to Determine The Positive and Negative Terminals of A Solar Panel
How to Check Solar Panel Polarity
How to Use Solar Panel Connectors and Cables
The Ultimate Solar + Storage Blueprint
The polarity of the solar panel is a crucial factor to consider during installation. If your system is not configured properly, you could end up wasting energy and have to buy more power from the grid, which hurts your wallet. See more on [shopsolarkits](#) [richardgiles](#)



How to identify positive and negative solar panel polarity

Look for "+" and "-" symbols stamped into the panel frame, embossed on wiring insulation, or printed on adhesive labels under the glass surface. For newer panels, red sheathing typically indicates positive ...



Contact Us

For catalog requests, pricing, or partnerships, please visit:

<https://firmaskrzypek.pl>

Phone: +48 22 426 71 90

Email: info@firmaskrzypek.pl

Scan the QR code to access our WhatsApp.

