



# Is the flow battery room in a communication base station considered equipment





## Overview

---

Telecommunications rooms shall contain communications equipment only. ITS recommends that no Telecommunications Room shall be used as a pass thru for any other building services such as water, gas, exhaust vents, etc., but if it is necessary to do so, then there SHALL BE NO maintenance valves in. Data Center UPS reserve time is typically much lower: 10 to 20 minutes to allow generator start or safe shutdown. Reprinted with permission from FM Global. Source: Research Technical Report Development of Sprinkler Protection Guidance for Lithium Ion Based Energy Storage Systems, © 2019 FM Global. Working on a battery should always considered energized electrical work. NFPA 70E®, Standard for Electrical Safety in the Workplace®, Chapter 3 covers special electrical equipment in the workplace and modifies the general requirements of Chapter 1. These batteries excel in energy storage, making them ideal for larger installations that require consistent power over extended periods. Another alternative is the sodium-sulfur (NaS) battery. What is a telecom battery backup system?

A. What makes a telecom battery pack compatible with a base station?

Compatibility and Installation Voltage Compatibility: 48V is the standard voltage for telecom base stations, so the battery pack's output voltage must align with base station equipment requirements.



## Is the flow battery room in a communication base station considered



### [UFC 3-520-05 Stationary Battery Areas: replaced by UFC 3-520 ...](#)

When batteries are located in a separate room, design the makeup (replacement) air volumetric flow rate equal to approximately 95 percent of the exhaust flow rate to maintain the battery room under ...

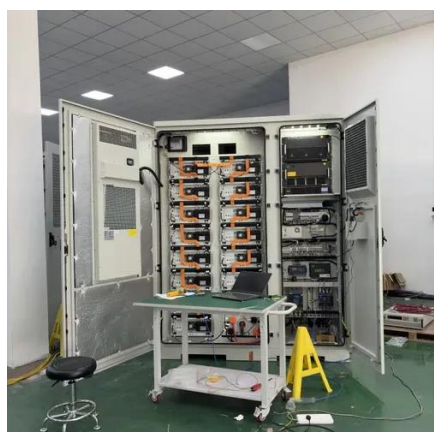
### [Communication base station flow battery equipment of various ...](#)

How does a telecom base station work? Telecom base stations--integral nodes in wireless networks--rely heavily on uninterrupted power to maintain connectivity. To ensure continuous ...



### [Communication base station flow battery equipment and functions](#)

This paper focuses on the engineering application of battery in the power supply system of communication base stations, and focuses on the selection, installation and maintenance of



### [What equipment does the liquid flow battery in the communication ...](#)

The core hardware of a communication base station energy storage lithium battery system includes lithium-ion cells, battery management systems (BMS), inverters, and thermal management ...



### Use of Batteries in the Telecommunications Industry

The Alliance for Telecommunications Industry Solutions is an organization that develops standards and solutions for the ICT (Information and Communications Technology) industry.



### Is the flow battery room of a communication base station ...

In this article, the schedulable capacity of the battery at each time is determined according to the dynamic communication flow, and the scheduling strategy of the standby power considering the ...



### NFPA 70E Battery and Battery Room Requirements , NFPA

Battery systems pose unique electrical safety hazards. The system's output may be able to be placed into an electrically safe work condition (ESWC), however there is essentially no way to ...



### Super communication base station flow



## battery construction ...

Among various battery technologies, Lithium Iron Phosphate (LiFePO<sub>4</sub>) batteries stand out as the ideal choice for telecom base station backup power due to their high safety, long lifespan, and excellent ...

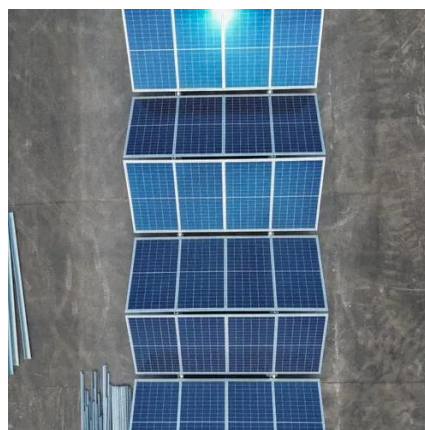


## Replacement equipment on the flow battery tower of the ...

One such option is the flow battery. These batteries excel in energy storage, making them ideal for larger installations that require consistent power over extended periods.

## **Section 271100**

Entrance Telecommunications Room (ETR): An enclosed architectural space for housing telecommunications equipment, cable terminations, and cross-connect cabling.





## Contact Us

---

For catalog requests, pricing, or partnerships, please visit:

<https://firmaskrzypek.pl>

Phone: +48 22 426 71 90

Email: [info@firmaskrzypek.pl](mailto:info@firmaskrzypek.pl)

Scan the QR code to access our WhatsApp.

