



Is a 60-jin photovoltaic panel heavy





Overview

A typical residential solar panel weighs in a moderate range that requires careful handling during installation. A standard 60-cell module, which is the most common size for home installations, usually weighs around 40 pounds (18 kilograms). However, here are approximate weight ranges for common solar panel categories based on cell size: 1.



Is a 60-jin photovoltaic panel heavy



Solar Panel Weight Guide - Solar Generation USA

On average, a standard residential solar panel (around 60 cells) weighs between 18 to 23 kilograms (40 to 50 pounds). Larger commercial panels (typically 72 cells) can weigh up to 30 kilograms (66 pounds) or more.

[Solar Panel Size & Dimensions Guide 2025](#) [. Complete Specs](#)

Complete guide to solar panel sizes and dimensions. Compare 60-cell vs 72-cell panels, weights, roof space requirements, and installation specs for 2025.



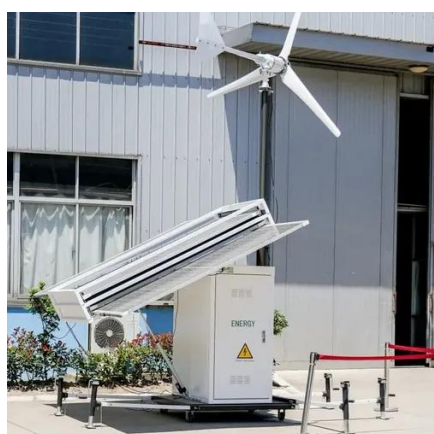
[Standard Solar Panel Sizes And Wattages](#) [\(100W-500W Dimensions\)](#)

As we can see, those 60-cell, 72-cell, and 96-cell solar panel dimensions are a bit theoretical. These are the practical solar panel dimensions by wattage from solar panels that are actually sold on the market (made by ...



[Weight Of Solar Panels On Roof: Detailed Guide For Safe Solar](#)

Most homeowners use silicon-based photovoltaic (PV) panels, typically available in 60-cell or 72-cell configurations. A standard 60-cell panel weighs between 35 and 42 lbs (16-19 kg). Larger 72-cell panels ...



Solar Panel Weight Guide

Compared to 60- and 72-cell panels, 96-cell panels tend to have a broader weight range. So there you have it! The average solar panel weight ranges from 40 to 55 pounds, with 40 pounds as the most ...

Are Solar Panels Heavy? How Much Do They Weigh?

A standard 60-cell module, which is the most common size for home installations, usually weighs around 40 pounds (18 kilograms). These panels are generally about 65 inches long and 39 inches ...



How Much Does a Solar Panel Weigh?

A standard-sized commercial solar panel, which is slightly bigger than residential panels and contains 72 solar cells, typically weighs more than 50 pounds. Overall, solar panels can weigh as little as 33 ...

[How Much Do Solar Panels Weigh? A](#)



Complete Guide To Solar Panels ...

In general, a 60 cell residential solar panel weighs between 35lbs and 50 lbs (16-22 kg) and can produce between 300 and 400 watts of power. However, a 36 cell flexible (thin-film) solar panel which can ...



How Big Are Solar Panels? Understanding Solar Panel Size and Weight

Typically, a standard 60-cell solar panel weighs around 40 pounds (18-23 kilograms), while larger panels can weigh more. For example, a 72-cell panel may weigh around 50 to 80 pounds (23 to 36 kilograms).

average weight of modern solar panels

How much does an average modern solar panel weigh? Most standard residential 60-cell panels fall into the 40-50 pound range, which is roughly comparable to a large suitcase or a bag of concrete mix.





Contact Us

For catalog requests, pricing, or partnerships, please visit:

<https://firmaskrzypek.pl>

Phone: +48 22 426 71 90

Email: info@firmaskrzypek.pl

Scan the QR code to access our WhatsApp.

