



# How to install positive and negative electrodes when installing photovoltaic panels





## Overview

---

The positive terminal of one panel must connect to the negative terminal of the next. For instance, connecting two 12V panels in series can create a total of. The article explains how to determine the positive and negative terminals of a solar panel, crucial for proper installation to avoid energy wastage. Understanding the polarity is crucial, 2. This wiring type increases the output voltage, which can be measured at the available terminals.



## How to install positive and negative electrodes when installing photo



### [How to install positive and negative electrodes for photovoltaic ...](#)

Are you considering installing solar panels at home to harness renewable energy and save on electricity bills? In this guide, we will take you through a detailed step-by-step

### [How to connect the positive and negative of solar panels](#)

To effectively connect the positive and negative terminals of solar panels, it is essential to follow a systematic approach that ensures optimal performance and safety.



### **Solar Panel Positive and Negative (Diode + Voltmeter)**

In this article, you will learn how to determine the positive and negative terminals of a solar panel. We will also show you how to check solar panel polarity, and how to connect a solar panel to a battery.

### [Understanding the Grounding in Solar Panels: Positive or Negative?](#)

When it comes to solar panels, the question of whether to use positive or negative grounding is more than just a technicality; it influences safety, efficiency, and the overall ...



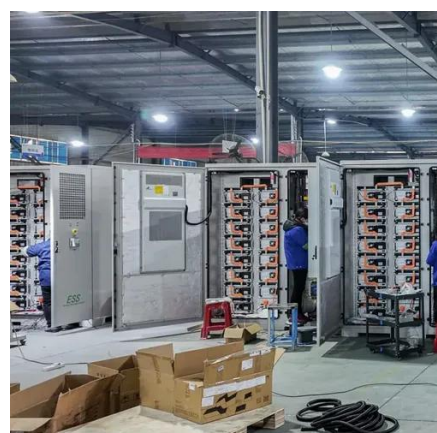
## [How to adjust the positive and negative poles when installing](#)

First of all, adjust the elevation of the solar panel according to the determined appropriate installation angle and orientation to ensure good and sufficient lighting conditions



## [How to place positive and negative wires on photovoltaic panels](#)

The article explains how to determine the positive and negative terminals of a solar panel, crucial for proper installation to avoid energy wastage. Methods include examining the diode and using a ...



## [Grounding and Methods of Earthing in PV Solar System](#)

This article covers grounding in PV systems, which differs slightly from standard grounding systems. The concept and purpose of grounding in DC systems, such as solar panels and photovoltaic arrays, are ...

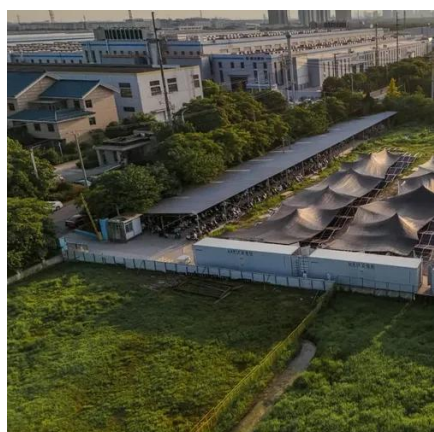
## [How to Wire Solar Panels: A](#)



## [Comprehensive Guide to Solar Panel](#)

Series Connection: In a series connection, you attach the positive terminal of one solar panel to the negative terminal of another panel in a solar system. This setting increases total voltage ...

**12.8V 200Ah**



### **Photovoltaic panel wiring positive and negative**

The article explains how to determine the positive and negative terminals of a solar panel, crucial for proper installation to avoid energy wastage. Methods include examining the diode ...

## [How to connect solar panels to distinguish positive and negative poles](#)

To effectively connect solar panels, it's essential to recognize the distinction between positive and negative poles. 1. Identifying the poles accurately is cru...





## Contact Us

---

For catalog requests, pricing, or partnerships, please visit:

<https://firmaskrzypek.pl>

Phone: +48 22 426 71 90

Email: [info@firmaskrzypek.pl](mailto:info@firmaskrzypek.pl)

Scan the QR code to access our WhatsApp.

